



Supervision software for Intrusion detection,  
Fire detection and CCTV systems



MADE IN ITALY



Supervision  
software line





# GLOBALPRO

Supervision software for Intrusion detection,  
Fire detection and CCTV systems

GLOBALPRO is the new supervision software that allows to obtain a powerful and, at the same time, **easy-to-use tool to monitor 24 hrs** the status of your EL.MO. intrusion detection, fire detection and CCTV system, both local and remote.

**One software solution**, thanks to interactive driven menu, to manage quickly the advanced functions of the monitoring and control. No unnecessary notification, no information overload: GLOBALPRO is designed to view **only the information that you want, even on more than one screen**. Thanks to a customizable graphic, the information are structured according to your taste.

It implements solutions that simplify every phase of supervision and monitoring activity. **Everything under control, nothing will appear redundant**. With GLOBALPRO you've finally found your ideal supervision software.

## Installation type



### Intrusion detection

Intrusion detection systems based on **ETR and TITANIA** control units through CEI/ABI communication protocol



### Fire detection

Fire detection systems based on FX series (**FX/10, FX/20, FX/50, FXPRO and FXUP**) and TACÓRA series (**TA4000, TA2000, TA1004 and TA1002**) control units\*



### CCTV

CCTV system (**e-Vision® PREMIUM** series cameras and DVRs/NVRs or **e-Vision® SMART** series DVRs/NVRs). It allows the management of the video-analysis systems based on Mirasys software



## Why GLOBALPRO



### Everything you have to know

GLOBALPRO is a supervision software based on “operator relief” principle, in order **to facilitate the normal activity of the user**, more or less expert. Indeed, it is designed to view immediately **only the events and information that interest you**. In addition, thanks to the events viewing through **colored boxes**, you can categorize the information according to your needs to obtain a complete, immediate and easy view of the monitored sites.



### Modular and flexible

GLOBALPRO allows to realize **flexible and easy riconfigurabile systems**. The expansion or upgrade of existing systems is performed without problems and without complicated reconfigurations. It is a flexible system, it can be reconfigured at any time according to your needs, thanks to the operations via **LAN network**.



### Scalability

GLOBALPRO is available in **4 licenses versions**, perfectly adapted to the system or group of system to be monitored. But the scalability does not stop here: there are **additional licenses** to extend the number of managed alarm points or monitored sites in order to manage also evolving systems.



### Immediate and intuitive user experience

GLOBALPRO offers **summary information always available and displayed**. The GLOBALPRO interface allows to exclude from display the graphic part and to keep only the textual presentation, or vice versa; **you will only see what you actually need, for an optimal usage of the whole screen or, if necessary, of more than one.**



### Server-client structure

GLOBALPRO (except GPRO4 version) **allows the creation of organized server + client structures**: in this way it is possible to create multiple client stations belonging to a single server and to place on different locations the sites monitoring.



### Evolved log event consultation

The event log of the system is equipped with filters (**ordered by time, date, company, website, alarm etc...**) always at your fingertips, allowing an easy and immediate operation and to find quickly a specific event.

## Target audience



### Installers

- » Tool to promote the **systems renewal** installed in multi-site companies.
- » To offer last generation **technology solutions**.
- » To propose itself as **cutting edge and professional partner**.



### Surveillance institutes and service centers

- » **To centralize in a single tool** the supervision of the intrusion detection, fire detection and CCTV systems of different companies and their sites.
- » **To facilitate event management and maintenance** of the systems.
- » An easy and immediate operational tool 24 hrs, 7 days a week.



### Dealers

- » Tool for **customer loyalty**.
- » **To integrate** the entire commercial offer: intrusion detection, fire detection, videosurveillance.
- » **To expand the client pool**.
- » Opportunity to offer **advanced solutions** and to propose upgrade of existing systems.



### End users

- » **To centralize the monitoring** of sites located throughout the area, anywhere in the world.
- » It allows the creation of internal low-cost control rooms, controlled by non-armed operators, reducing stakeout and patrol.
- » To facilitate the **systems and maintenance management**.
- » It acts as integrator and operator of the technology alarms.

## Graphic interface

Messaging tool  
ADMIN/Operator and  
Operator/Operator

Procedures  
creation

Menu of event management

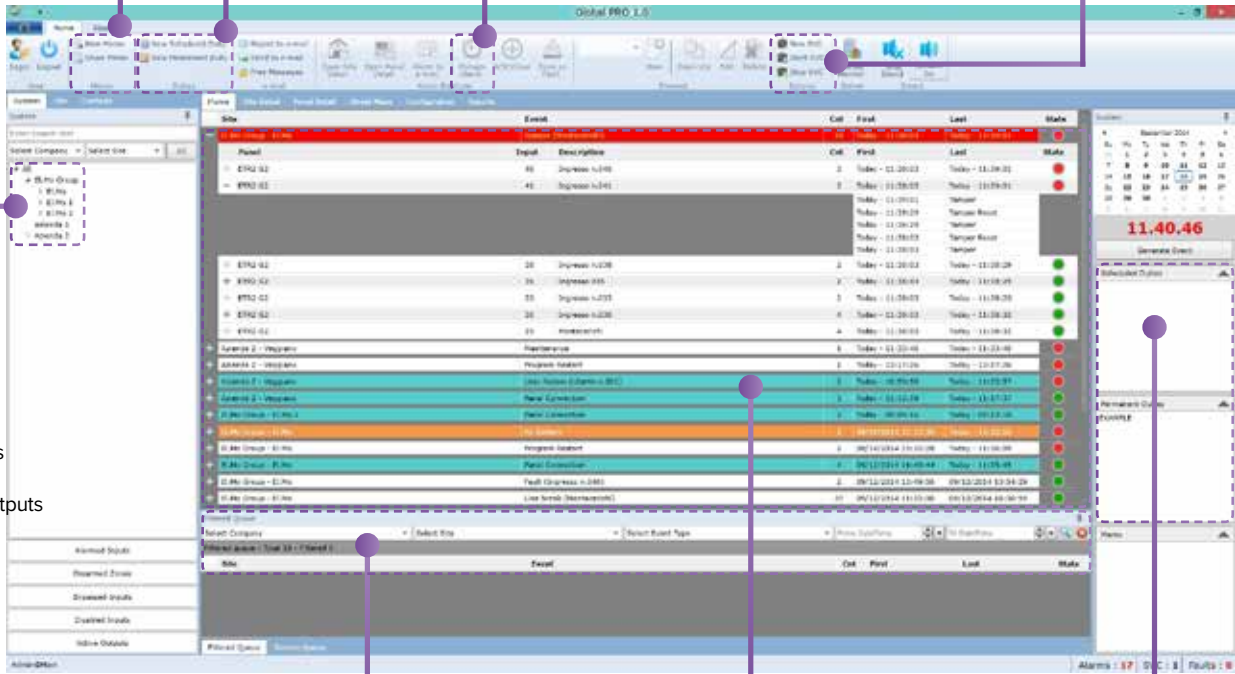
Menu of maintenance  
activities management

Tree structure:  
- Company  
- Sites  
- Control units  
- Zones  
- Inputs/Outputs

Bar of events log  
consultation

Events listed in  
colored  
customizable  
boxes

Procedures  
panel



The screenshot displays the GLOBALPRO 1.5 software interface. It features a top menu bar with options like 'File', 'Edit', 'View', 'Tools', 'Help', and 'About'. Below the menu is a toolbar with icons for various functions. The main window is divided into several sections: a left sidebar with a tree structure for navigation, a central area with a table of events, and a right sidebar with a 'Procedures panel' and a 'Bar of events log consultation'. The event table has columns for 'Site', 'Event', 'Call', 'First', 'Last', and 'State'. The events are listed in colored boxes (green, red, orange, blue) to indicate their status. The right sidebar also shows a 'Procedures panel' with a list of procedures and a 'Bar of events log consultation' with a table of events.

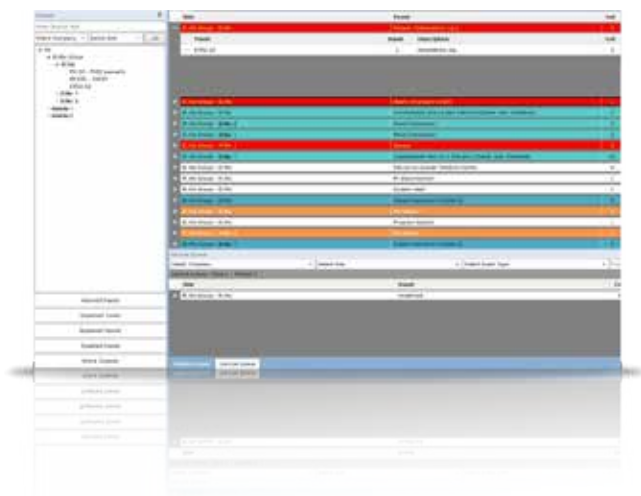
## Evolved functions



### Thousands of events? No problem

The GLOBALPRO graphical interface allows to automatically organize the events in the **specific customizable box**. In this way, the event of the same type or of the same site will be immediately allocated in specific colored box. This allows a very quick consultation, **without overload information**. A colored icon (green or red), placed to the side of the box, indicates the event status. Moreover, since you can connect several screens to the PC, you can achieve a simple and immediate overall view.





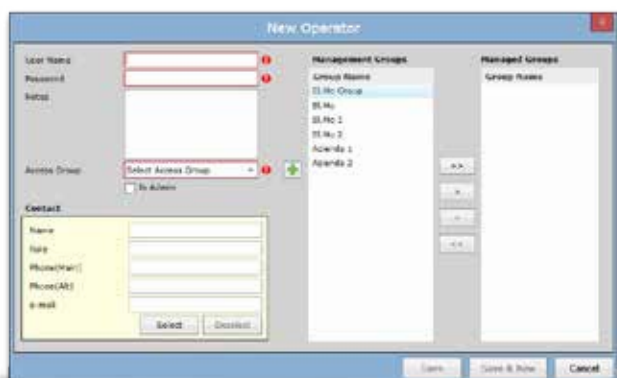
## “Simplicity” with the tree structure

GLOBALPRO is designed to manage and monitor a **large number of sites** thanks to its **“tree” hierarchy**. This allows to view the systems elements to be monitored. Indeed, starting from the highest level (eg multisite companies), it's possible to manage also the single input or the single output of a control unit:

- Company
- Site / Sites
  - Control units (Intrusion detection or Fire detection)
  - Managed zones
    - Inputs
    - Outputs

## VIDEO customization

About the **CCTV section**, GLOBALPRO allows a creation of custom viewing windows (CCTV objects): **the user will be able to select which and how many cameras (1-4-9-16) to see (and also to choose which screens will display them), in order to create a dedicated station for real time monitoring of the selected areas.** In addition to the image viewing, the operator can also have an active role, controlling the PTZ speed dome (Pan-Tilt-Zoom) in order to follow a subject or a vehicle in the monitored area or change the framed area.



## Different profiles

The creation of an “operator” account is a very delicate operation for a software that will manage sensitive elements of the system such as intrusion detection, fire detection and CCTV. With GLOBALPRO you have the possibility to create different types of operator profiles, with few and simple operations, ensuring always the maximum security. For every new operator should be defined three key aspects:

- **Contat details:** name, address and position
- **Management groups:** sites on which it will operate
- **Access Groups:** user profile that defines the enabled/disabled functions and the operations that can perform on the managed sites (system connection/disconnection, detectors enabling/disabling, supervision only, etc.)
- **Preferences configuration:** customized settings for each user (display mode, video functions, ...)

## Alarm management: you can manage events with a few clicks

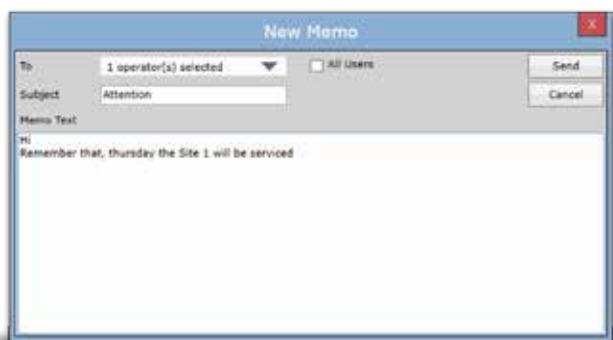
For each event signaled by GLOBALPRO, through an **interface window**, it is possible to enable and act different settings and functions and to operate immediately. In particular, you can save the **contacts information** (names, telephone, e-mail) of the **security and maintenance managers to signal and arrange with them a suitable intervention plan**; with a simple click it's possible to send an event report and to inform the manager. The operator can choose to close manually or automatically the intervention when the event status will be normal.

**Lastly, it is possible to set the automatic opening, in case an event occurs, of a video object or of one or more maps including the field devices.**



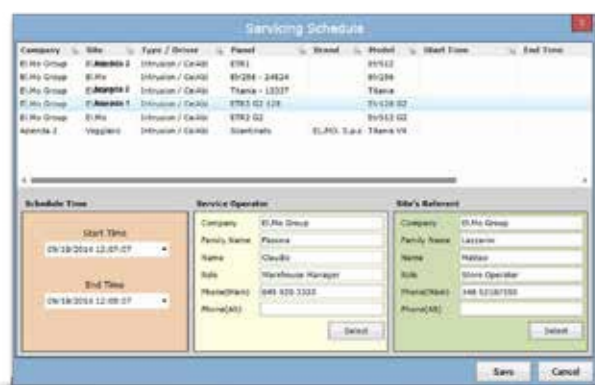
## MEMO function: a continuous exchange of information

The information exchange **between an administrator and operators or between operators** is important for an effective and prompt supervision service, especially for complex systems. GLOBALPRO implements "MEMO" function, **an integrated messaging tool** for real-time communication. It is very useful especially for the handover between operators, **for the distribution and assignments of the tasks and for the memo creation.**



## SERVICING function: plan and manage the maintenance operations

With GLOBALPRO, the **maintenance** activities management (ordinary or extraordinary) is no longer a problem. Indeed, to do this type of activity is necessary to simulate **several times alarms** on the system elements that will generate notifications and an information overload to the supervisor. GLOBALPRO features the **"SERVICING" function which allows to schedule a maintenance plan** with the involved operators, the maintenance personnel and security manager. During the maintenance, the alarm events, tamper or anything else will be properly signaled and stored on a dedicated section, without interfering with the normal task of the supervisor.



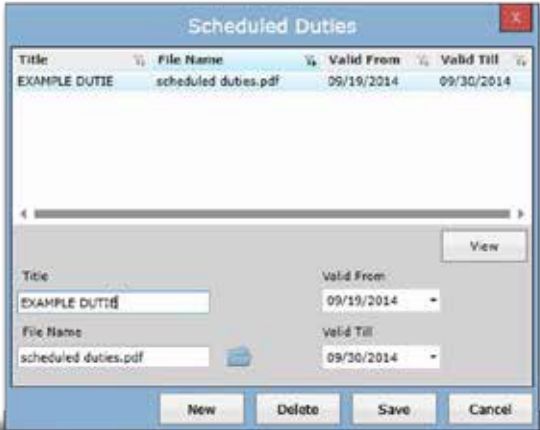


## The faults management

GLOBALPRO offers smart solutions for different types of problems (e.g. a fault) which can occur in normal supervision activities. In addition there is **“SAVE AS FAULT”** function that allows to set a specific element of the system such as fault (e.g. a sensor), thus avoiding actions such as exclusion or disconnection. In this way, **all the events will be listed in a proper section** until to the correct operation. This function avoids the operator to receive continuous alarms that would divert attention.

## The procedures at your fingertips

What to do when an event occurs? Who contact and what actions activate? What are the routine (arming/disarming times) of a specific site? These are some questions that could be asked an user of supervision software. GLOBALPRO **assist an operator during the all the standard procedures** for a more timely and accurately reaction. It is possible to **set a plan of standard or extraordinary procedures** (actions to be performed, reports to be made, people to contact): a memo easy to consult available in PDF format for the operators. This is a useful tool for the alarms management and normal operations such as arming/disarming system, sharing and updating information of all operators involved in the supervision process.



## Configuration never been so easy

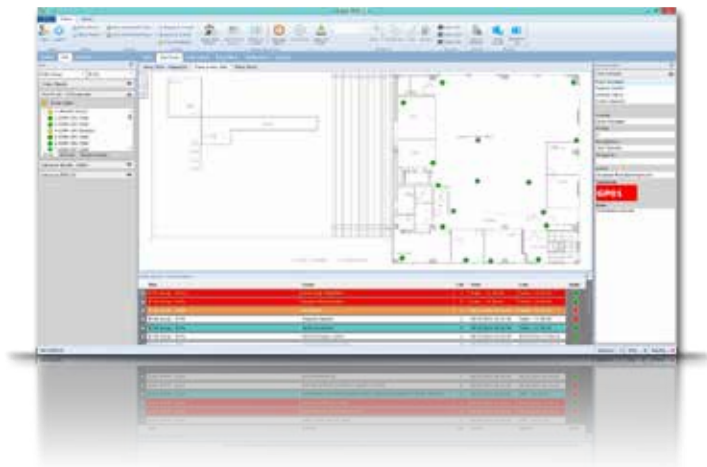
GLOBALPRO is designed to facilitate the work of operators, even if inexperienced. GLOBALPRO allows the automatic acquisition of detectors configurations and descriptions by the programming browser of the control units, reducing or eliminating arming times and typing errors. This function can be used several times, even when you need to upgrade system device: **import a new “.ini”** file and synchronize or replace the previous one.



## Help with maps

GLOBALPRO allows to import maps in **JPEG PNG, DWG e DXF** format. In this way it is possible to place on the maps the detectors and other devices in the system in order to obtain an overall view of the monitored sites. Different colours identifies the detector status (arm/disarm, exclusion status, tamper status, power supply status) allowing to detect the reason and the place of the failure for a prompt intervention. The GLOBALPRO advanced graphical maps allow to monitor the detectors also if the control unit is disconnected and to update the current map on the alarmed detector.

**It is possible to set the automatic opening, in case an event occurs, of one or more maps, that can later be arranged on the available screens.**



## Localization with street map

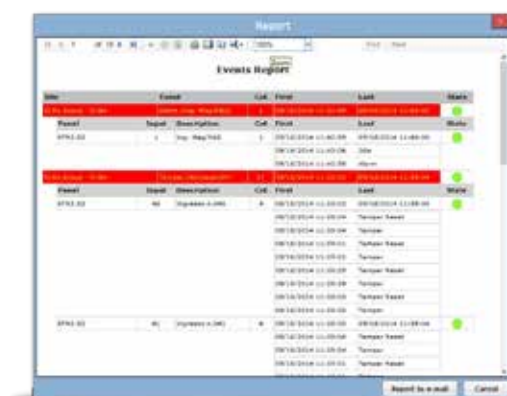
GLOBALPRO implements also the **“Street MAP”** function for a **quick geographic location of a site**. A proper map, associated directly to Google Maps during the system configuration, will allow to take advantage of all the functions of the powerful Google street tool such as zoom, routes setting and view changing. This feature is very useful to drive an Intervention team in real time on the site, providing all the necessary **road information**.



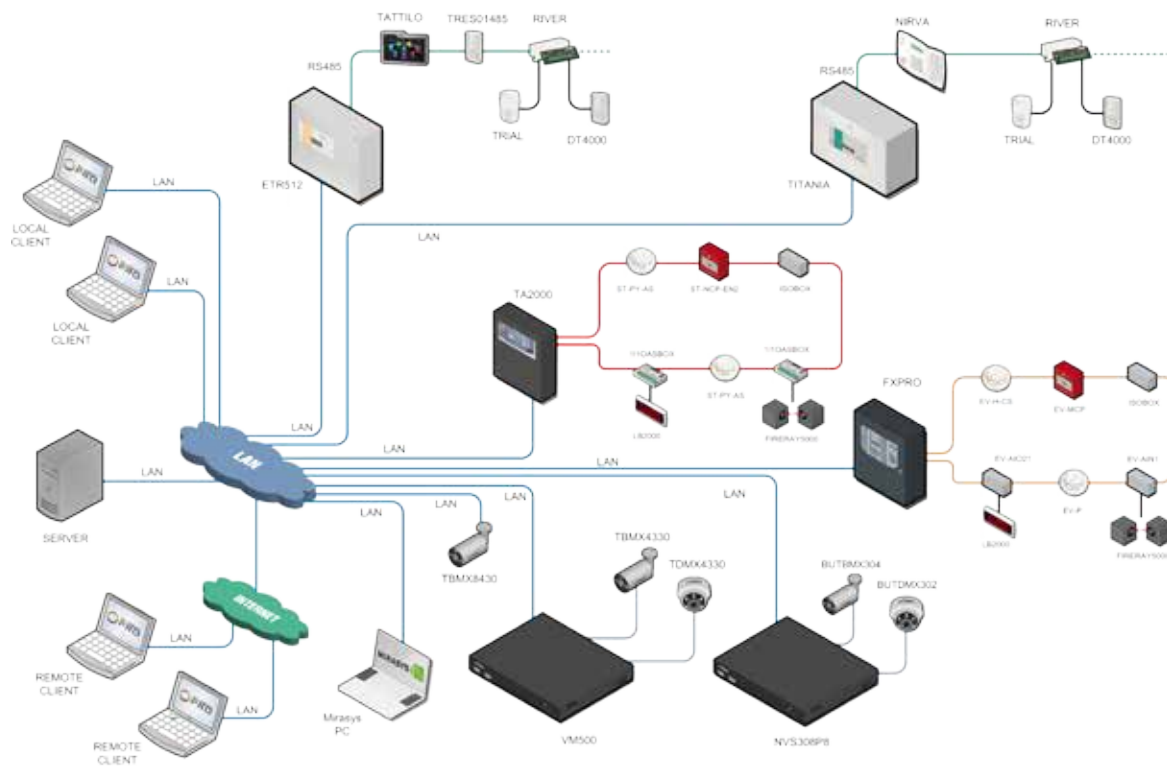
## Reporting always at your fingertips

GLOBALPRO is able **to create report** of the event log. It offers **several preconfigured solutions** to generate detailed reports, filtered by date, time, company, location and alarm type. In addition, for users with computer programming knowledge, there is the possibility to create reports even more targeted and customized. Once generated the report, it is possible to save it in 3 different formats (**Word, Excel and PDF**).

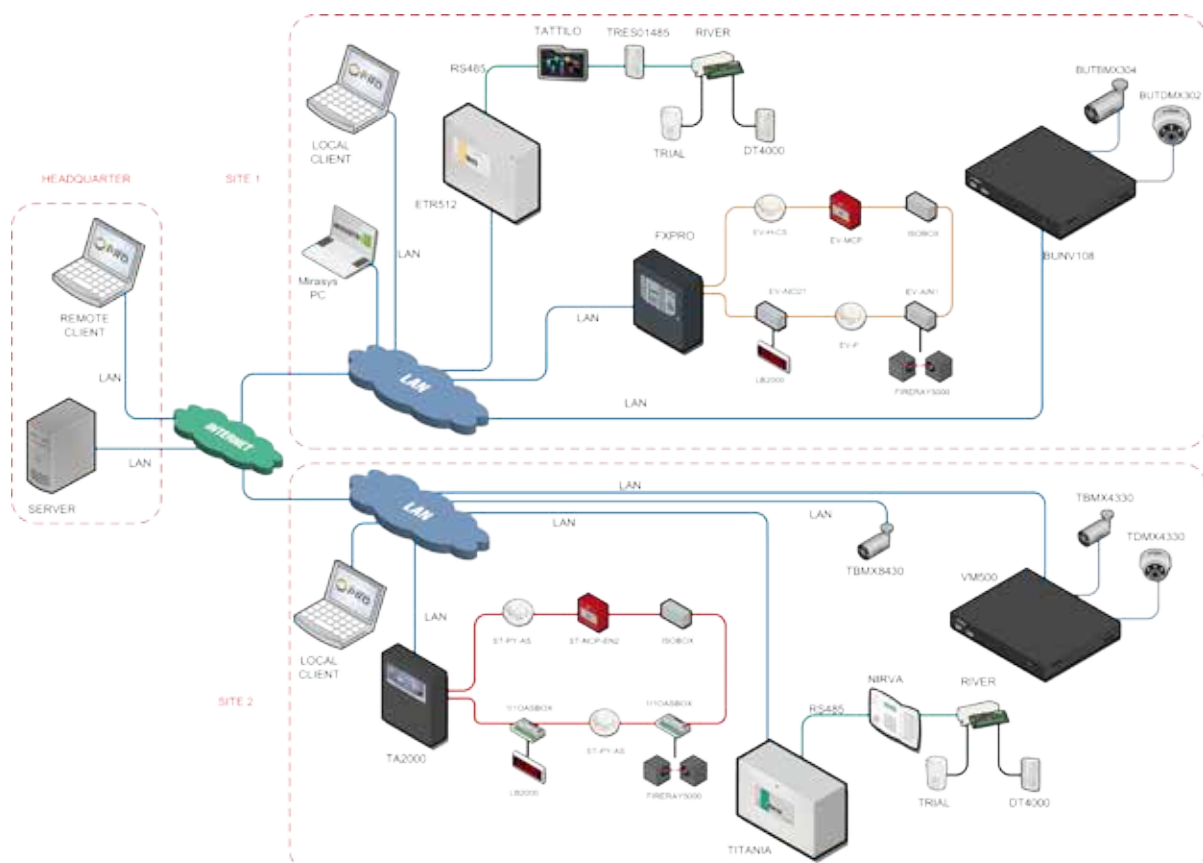
Lastly, a function is available for automatic e-mail sending: it allows to automatically send at a scheduled time e-mail messages concerning the system status.



## GLOBALPRO functional scheme - 1 site supervisor



## GLOBALPRO functional scheme - Multi-site supervisor





## GLOBALPRO licenses

License	GPRO4	GPRO3
Product code	GMPRO0100400	GMPRO0100300
	<ul style="list-style-type: none"> <li>GLOBALPRO supervision software license, management up to 100 alarm points of which 4 cameras, 1 site, 1 client. Not expandible.</li> </ul>	<ul style="list-style-type: none"> <li>GLOBALPRO supervision software license, management up to 500 alarm points of which 24 cameras, 1 site, unlimited client</li> </ul>
License	GPRO2	GPRO1
Product code	GMPRO0100200	GMPRO0100100
	<ul style="list-style-type: none"> <li>GLOBALPRO supervision software license, management up to 1.000 alarm points of which 64 cameras, 1 site, unlimited client</li> </ul>	<ul style="list-style-type: none"> <li>GLOBALPRO supervision software license, unlimited management for intrusion detection and fire detection alarm points and cameras, 1 site, unlimited client</li> </ul>
License	GPROLS1	GPROLP1
Product code	GMPRO0100500	GMPRO0100600
	<ul style="list-style-type: none"> <li>GLOBALPRO supervision software license for 1 additional site(for GPRO1, GPRO2 and GPRO3)</li> </ul>	<ul style="list-style-type: none"> <li>GLOBALPRO supervision software license for GPRO2 and GPRO3</li> <li>for 100 additional alarm points of which 10 cameras</li> </ul>
License	GPROINTRUSION	GPROFIRE
Product code	GMPRO0100700	GMPRO0100800
	<ul style="list-style-type: none"> <li>GLOBALPRO supervision software license only for intrusion detection systems that are based on ETR and TITANIA control units. It manages up to 512 intrusion alarm points, 1 site, 1 client. Not expandible</li> </ul>	<ul style="list-style-type: none"> <li>GLOBALPRO supervision software license only for fire detection systems that are based on FX and Tacóra control units (for control units of the Tacóra series, GLOBALPRO only allows to monitor the status of the connected devices, like in BROWSERONE. It is not possible to send commands to these devices or to distinguish between their fault and alarm statuses). It manages up to 512 fire alarm points, 1 site, 1 client. Not expandible</li> </ul>

- The GLOBALPRO required a free training course at the EL.MO. headquarter; on request the course can be performed at the customer site (upon an estimated of cost). The customer can required computing and technical assistance.
- Each GLOBALPRO license includes a software maintenance insurance. It is valid for 12 months starting from the issue date of the activation key.

### GLOBALPRO SMA license

- Insurance extension up to 24 months for software maintenance. The insurance must be purchased within the first 12 months of the application using (12 months starting from the issue date of the license activation key)
- It ensures the GLOBALPRO's user to access the updates for:
  - » Performance improvements
  - » New features addition
  - » New product families support
  - » Adaptation to future versions of the operating systems of servers and workstations
  - » Functions corrections
- Contact EL.MO. headquarter for further SMA extensions

License	GPRO4SMA	GPRO3SMA
Product code	GMPROSM00400	GMPROSM00300
	<ul style="list-style-type: none"> <li>SMA for GPRO4</li> </ul>	<ul style="list-style-type: none"> <li>SMA for GPRO3</li> </ul>
License	GPRO2SMA	GPRO1SMA
Product code	GMPROSM00200	GMPROSM00100
	<ul style="list-style-type: none"> <li>SMA for GPRO2</li> </ul>	<ul style="list-style-type: none"> <li>SMA for GPRO1</li> </ul>
License	GPROLS1SMA	GPROLP1SMA
Product code	GMPROSM00500	GMPROSM00600
	<ul style="list-style-type: none"> <li>SMA for GPROLS1</li> </ul>	<ul style="list-style-type: none"> <li>SMA for GPROLP1</li> </ul>
License	GPROINTRUSIONSMA	GPROFIRESMA
Product code	GMPROSM00700	GMPROSM00800
	<ul style="list-style-type: none"> <li>SMA for GPROINTRUSION</li> </ul>	<ul style="list-style-type: none"> <li>SMA for GPROFIRE</li> </ul>

### GM168

GMSW50400100



- 16 in / 8 out generic LAN interface with CEI-ABI protocol
- It allows to interface intrusion detection and fire detection control units, DVR and NVR of third parts or existing devices through GLOBALPRO via LAN network
- 8 single-balanced input
- 8 inputs for electronic control
- 4 relay outputs with C-NO-NC contacts, 4 open collector electronic outputs
- Power consumption 280mA
- Dimensions W205 x H250 x D68mm, IP3X

Some additional engineering services (video maps creation and uploading, alarm points uploading and configuration, system start up) are available. For more information contact EL.MO. headquarter

## GLOBALPRO glossary

- » **Site:** Physical location (factory, office, shopping mall) managed by one or more control units (fire detection or intrusion detection).
- » **Control unit:** fire detection or intrusion detection control unit.
- » **Alarm point:** device for intrusion or fire alarm detection (volumetric sensor, magnetic contact, fire detection sensor etc).
- » **Video point:** shooting device (camera).





EL.MO. SpA | Via Pontarola, 70 | 35011 Campodarsego (PD) - IT  
Tel: +39.049.9203333 | Fax: +39.049.9200306  
e-Mail: [international@elmospa.com](mailto:international@elmospa.com) | [www.elmospa.com](http://www.elmospa.com)

