

**SAVE LIVES & SAVE MONEY
with Smarty**

SMART BLACK BOX

3 channel in-vehicle video recorder



- Built in Microphone
- Built in 3-Axis G-sensor
- External GPS
- External Panic Button
- Diagnostic Indicator
- SD Memory Card
- 3 Alarm input
- Car speed pulse
- Continuous Recording
- Panic / Event Recording
- Data analysis Software

Smarty

Drive Partner for your Safety



3 Cameras Recording
front camera, night vision camera and rear view camera records front, interior and rear view



Panic Button
Record with a single button-for instant manual operation override



Condition Check-up
Checks accurate recording and operating condition using LED and alarm



Video & Audio Recording
Video : Event & Continuous recording can be selectable
Audio : Internal & External Mic (Option) can be selectable



Secure video recording
Embedded super capacity assures recording without failure in case of abnormal power shut down



Full-time recording of shocks / speed / location information
Easy management of route and driving habit through full-time recording of shocks / vibrations / speed / location



Excellent analysis software
Search, play and analyze by speed / shocks / location data



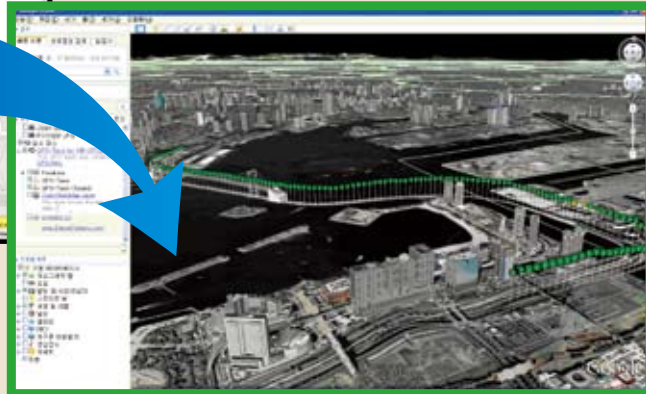
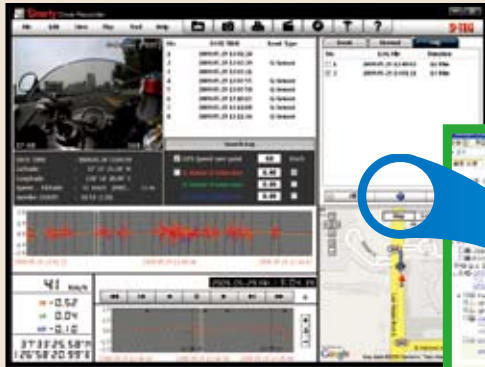
Shock sensor graph
Recorded data of incidents can be displayed in a clear-cut graph through 3G sensor



Integrated Google Map
Embedded GPS, record location and recorded content of the accident can be displayed simultaneously

D-TEG Security Co., Ltd.

Link to Google Earth



Analysis Software



Data values can be easily analyzed with video, audio, speed, gravity, acceleration and sensor value at the time of shock collected from GPS and G-sensor



AVI Converting
There is an AVI file converter available.



Create Monitoring Reports
All the information can be easily reported.

System Components



Small & Compact Recorder, Built in 3-Axis G-sensor



170 degree small CMOS camera



Panic Button LED indicator



GPS Antenna Location, Speed, Time Synchronization

Optional Accessories



External Microphone



Night Vision IR camera



Rear View camera



Rear View camera

BX3000 Specification

Video In	CH1-Front, CH2-Interior, CH3-Rearview	G Sensor	Internal 3-axis G-Sensor
Audio In	1CH (Internal / External Microphone)	Car Signal	Brake, Left Turn, Right Turn, Speed Pulse
AV Out	1 Video out, 1 Audio out	Alarm Input	3 (Door, Meter, etc.)
Continuous record	NTSC: 720x480 (30fps) 720x240 (60fps)	Compression	MPEG4 (Continues recording)
Event record	PAL : 720x576 (25fps) 720x288 (50fps)		MJPEG (Event recording)
Snap shot record	Still Image + Audio (5 sec)	Remote controller	Panic(Record) button, Playback button, Snap shot button
Main memory	4GB SDHC (support 32GB SDHC)	LED	2 (Red / Blue)
GPS	External GPS Module	Analysis Software	PC Viewer (support Google Earth)