

**SAVE LIVES & SAVE MONEY**  
*with Smarty*

# SMART BLACK BOX



# Smarty

*Drive Partner for your Safety*



#### **Event & Continuous Recording**

Event (Trigger) & Continuous recording mode can be selectable



#### **Secure video recording**

Embedded super capacity assures recording without failure in case of abnormal power shut down



#### **Full-time recording of shocks / speed / location information**

Easy management of route and driving habit through full-time recording of shocks / vibrations / speed / location (BX1000 Plus)



#### **Excellent analysis software**

Search, play and analyze by speed / shocks / location data



#### **Shock sensor graph**

Recorded data of incidents can be displayed in a clear-cut graph through 3G sensor



#### **Integrated Google Map(BX1000 Plus)**

Embedded GPS, record location and recorded content of the accident can be displayed simultaneously



#### **Panic Button**

Record with a single button-for instant manual operation override



#### **Condition Check-up**

Checks accurate recording and operating condition using LED and alarm

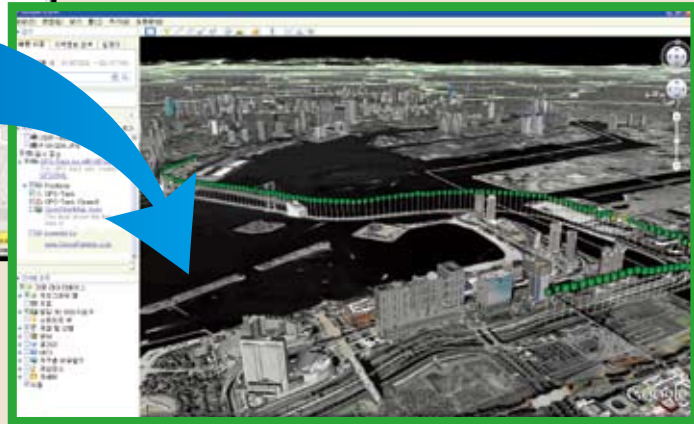


#### **Innovative Design**

Smart cylindrical design enables recording of vehicle interior as well as standard exterior recording

**D-TEG** Security Co., Ltd.

# Link to Google™ Earth



## Analysis Software



### Thumb Nail Search

Thumb Nail Search allows you to monitor frame by frame recording



### Shock sensor graph

Capture the accident with 3G sensors graph



### Create Monitoring Reports

All the information (speed, gravity, location with a map, acceleration and sensor value at the time of shock with video capture images) can be easily reported



### AVI Converting

If the administrator needs to e-mail driving files, there is an AVI file converter available.

## Specification

Model	BX1000 / BX1000 Plus	Model	BX1000 / BX1000 Plus
Image sensor	1/4" CMOS Digital Sensor 310K pixels	RTC	Internal battery
Angle of View	170 (H : 131°, V : 96°)	Buzzer	Recording start, error
Video resolution	640*480, 320*240	LED	2 LED (Record, Overwrite)
Frames per second	Up to 30 frames	Super Capacitor	Enable recording last file and shut down
Recording	Continuous/By impact/By emergency button	PC software	Supplied
Recording time	2GB (37minutes ~ 36hours), 16GB (7hours ~ 167hours)	Power input	12V ~ 24V (cigarette plug)
GPS	Internal GPS (BX1000 Plus only)	Power consumption	3.6W
G-Sensor	Internal 3-axis G-sensor	Size / Weight	80mm X 500 / less than 100g
Memory	SD memory card (support SDHC)	Operation Temp.	-10° ~ 50°