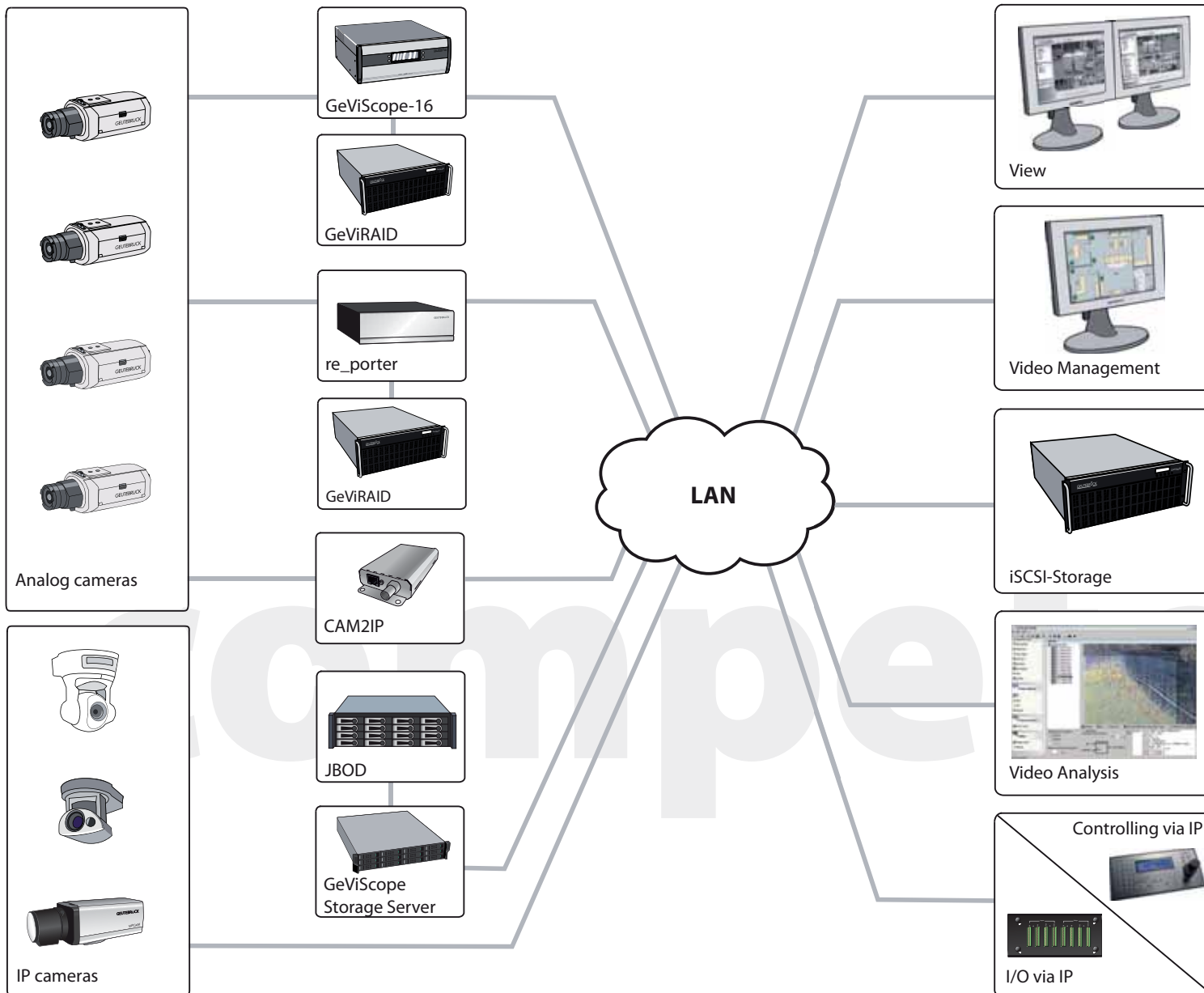


# compe tence



IP Solutions

# IP solutions for security experts – from GEUTEBRÜCK!



Video surveillance solutions from GEUTEBRÜCK offer seamless integration and migration **from analog to hybrid to pure IP systems**. Integrated solutions to address the demands of all involved, from the operator and the Admin to the investor.

**The GeViScope Enterprise Surveillance System** offers numerous functionalities in just one video system platform: everything from image recording to a virtual matrix, analog and IP, standard and megapixel. Intelligent video analysis evaluates the image content and generates alarms in critical situations. This sophisticated modular system is ideal for high performance.

| **User interfaces, parameterization and alarm management – all uniform for transparency and user friendliness.**

| **Intelligent video analysis algorithms – for tailor-made expansion of your system functionalities.**

| **Intelligent system monitoring and redundancy concept for maximum security.**

| **Open interfaces and freely configurable Software Development Kits (SDKs) — the highest level of compatibility for maximum flexibility and individual support of our development team if necessary.**

## The decision is yours – high-performance from hardware to software

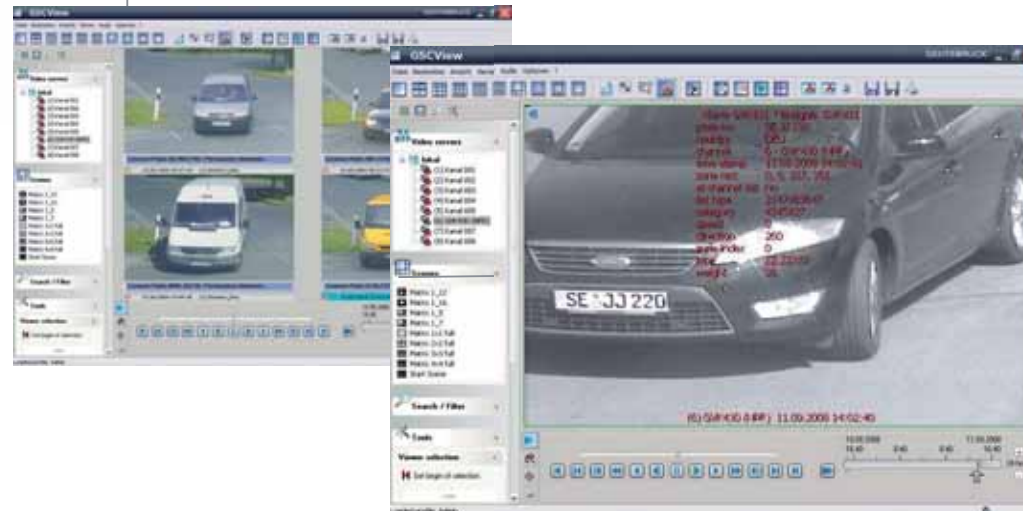
### GeViScope IP Server Edition

Dedicated video IP server, compatible with all well-known manufacturers. Hardware with a high degree of availability – redundant power supply, solid state disk for the operating system. Optional with RAID systems for the database management of several TByte per server. Integrated system monitoring using status display and front LEDs. **Highest level of availability and sophisticated functionality for your security.**



### GeViScope IP Video Management Software

For installation on your server, it fits perfectly into your existing IT infrastructure and you **remain fully flexible in the selection of hardware components.**



### GeViRAID II

SAS / SCSI / iSCSI solution for reliability and long-term stability of recordings and large quantities of data, for high-level requirements. Modern storage technology and the highest level of security against failure combined with a robust mechanical design. Alarm relay output for reliable failure recognition and the newest internal controller technology up to RAID Level 6 in combination with automatic monitoring of hard drive, operating temperature, fans and power supplies all ensure **the highest level of functional capability and availability of your digital video systems.**



### Fallback Recording Cache (FRC)

– **For even greater security:**

With FRC external storage solutions are just as reliable as internal storage solutions: Video data are written to cache in case of IP connection failure. After the connection has been restored, the data is automatically transferred to the central database. **All temporary connection errors are compensated – automatically.**



### GeViScope IP Storage Server

GeViScope IP solution and storage all in one. Server platform with up to 16 internal hard disks (configurable RAID 0 – 6). Completely preconfigured. Highly compact design, models from 1 HU to 3 HU. With 2 Ethernet ports (1 GBit).

### Intel Storage Server

For specific project requirements: GeViScope IP Video Management Software completely pre-configured on Intel Storage Servers.

## Perfectly designed for a wide range of needs

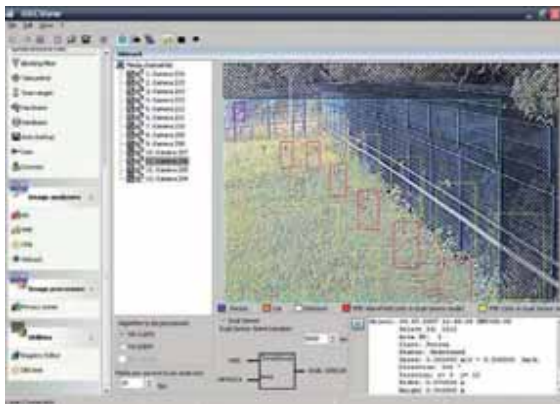
### From the user...

Different users need different information. In **GSCView** the operation can be individually configured and assigned to the individual user levels. With the **comprehensive alarm management**, you can ensure that there is an appropriate response when the time comes. Which notification is made and when it is made is defined beforehand, for clear task assignment. The user is given clear guidance and the necessary support to ensure the highest level of security, even in extremely stressful situations.

**GSCView: One uniform user interface for all system components**, from analog to IP, regardless of the manufacturer. This lets the user concentrate on the critical issues.

**Motion Search (MOS)** finds motion in definable areas in recorded or live pictures. Our Cut List function clearly summarizes the corresponding results and video sequences. This saves time and the operator can concentrate on the most important issues.

**Backup locally or in the network**, manually, scheduled or event-controlled. The exported video footage is digitally signed for complete traceability. You can back up in **GEUTEBRÜCK Backup Format (GBF)** or in standard formats, manipulation-proof and admissible in court.



**Video Analysis**  
Application:  
Dual Sensor  
Perimeter protection

*Select operating elements that are important to you and hide all others. Arrange the view window according to your needs and preferences, utilizing the full screen size.*



**Intelligent video analysis algorithms qualify the image data and alert you of critical situations.**

#### Activity Detection (AD)

Video motion detection for indoor as well as selected outdoor applications. Extremely low false alarm rate thanks to reliable suppression of global influences.

#### Video Motion Detection (VMD)

Professional video motion detection for outdoor applications detects moving objects analyzing direction and speed so that 'allowed' motion, for instance exiting, does not trigger a false alarm.

#### Image Analysis VA Class

Classifies objects in the image by size, speed, direction and status (person, vehicle, unknown) and triggers the defined alarm response upon detection.

#### Dual-Sensor

Combines both the VMD and VA Class detection methods for especially critical outdoor environments. Objects are classified and recognized in precisely defined alarm zones. Irrelevant motion in the picture is ignored so that the false alarm rate is extremely low.

#### Audio Activity Detection (AAD)

GeViScope doesn't just see, it hears everything too! Sounds trigger recording, switching to the alarm picture or an alarm notification at the monitoring centre.

#### Number Plate Recognition (NPR)

Analyzes picture data for number plate information and enables management of vehicle access rights and database searches by registration number, etc.



**Video Analysis**  
Application:  
Tunnel surveillance

# ...to the admin... ..to the operator

**Our components allow you to easily manage numerous systems in the network:** remote service and software updates, remote setup and alarm transmission via network. Clearly assign user rights in the central user administration for a precise allocation of rights and responsibilities, so that every user has access to the information he is officially entitled to see.

**Bandwidths are the Achilles' heel for networks:** Our IP solutions protect them many times over, using intelligent bandwidth management. Archiving costs go down – without compromising functionality or security.

**The integrated system monitoring** checks the system availability on its own. A notification is made of any functional impairment. After a power outage the system starts up automatically and protects alarm images from being overwritten.

**Our logbook "Audit Trail"** documents system status and user actions – manipulation-proof and absolutely reliable. Use the statistical evaluations for optimizing your system. The gapless traceability of any user action satisfies highest data protection demands.

**Status analysis** using comprehensive status and system notifications, via network, locally or over the optional diagnosis display. This display shows, in addition to the name, IP address and software version of the device, the current memory load and the processing speed (MByte/sec). Service time and date can also be verified using the display.

**You remain flexible when building up and maintaining your network architecture:**

Thanks to our modular system architecture, you decide which components are right for your individual needs.

**Reliability and protection for your investment**

Systems from GEUTEBRÜCK offer a high level of innovation, combined with continuity and stability. Our product generations are completely compatible with one another, and our solutions are fully scalable, flexible and expandable.

**Analog, hybrid or IP – with GEUTEBRÜCK the decision is yours.**

Your information needs, not the technology, are our focus. Our systems ensure seamless integration and migration from analog to hybrid to pure IP systems. Operation is uniform, independent of the technology, increasing the security of the object. This guarantees that your investment will be ready and relevant for the future. Because who knows today, what the demands of tomorrow will be?

**Open Interfaces and SDKs**

In critical situations concentration is needed, not on the technology, but on the events as they occur, so that the security personnel can quickly evaluate the situation and react appropriately. For this to be possible, it is absolutely necessary to have a comprehensive security concept, with all components intelligently interconnected. This is the only way to present the relevant information quickly and comprehensibly. Therefore reason open interfaces are a part of our philosophy. Our Software Development Kits (SDKs) are freely available and our own development team provides you and your developers with support, from planning to implementation and testing.

Our **media plug-ins** allow you to realize, for instance, additional camera connections with external developers and to integrate these into your system easily and cost effectively — meaning you've made a decision that's built for the future and your investment is secure.

Open Interfaces and SDKs





## Professional peripheral IP components

### VIPCAM:

Our IP camera – perfected for video applications!



Our high resolution day/night network camera with an **automatic IR-cut filter** delivers clear sharp pictures even in areas with widely varying light conditions. – Perfect for use near large areas of glass or in entrance halls. It produces no vertical smear effects in the image even when bright lights such as car headlights fall directly on the camera. The first in a new range of products in GEUTEBRÜCK's customary high quality, it requires little servicing. **The complete range of high performance DSP capabilities provide many functions to relieve the network and reduce storage requirements.**

### CAM2IP:

Our compact video encoder



**Integrate your analog cameras into the network** with no hassle and put the intelligent video management where it can relieve the strain on the network the most – close to the camera. Analog interior camera or a day/night camera that is especially suited for use outside – **CAM2IP delivers excellent image quality to the network without putting an unnecessary strain on the network.**

### MBeg/GCT-3X-LAN:

Multifunctional operator keyboard with LAN interface



**The versatile operator keyboard allows full control of live viewing:** camera display, PTZ control and alarm handling. The illuminated graphic display with its programmable softkeys makes operation clear and straightforward for the user, who therefore always has every situation under control – supported by the reliable user-friendly joystick with integrated zoom function.

## See what matters! Nothing less, nothing else! Relieve networks and reduce storage requirements

### **Bandwidths are networks' Achilles' heel.**

Our systems protect them in many ways through their intelligent bandwidth management. Archiving costs are reduced – without compromising functionality or security.

### **| MPEG4CCTV – Video compression perfected for video security applications**

Compression and decompression in real time with latencies below 120 ms. Outstanding image quality precisely when you need it. Relieves network infrastructure and reduces storage requirements. Data export is password protected and absolutely manipulation-proof for evidential quality documentation admissible in a court of law.

### **| Dynamic Live Streaming (DLS)**

Only requested data are transmitted. Live images are sent in precisely the size the user demands. If the viewing window is enlarged, then more data are sent; if it shrinks, then less data are sent.

### **| Intelligent Compression Dynamics (ICD)**

Images without motion usually do not contain any information that is relevant to the user, so are processed with low picture rates and low quality. Images with motion are delivered in real time and in the desired resolution and quality.

### **| Fading Long Term Memory (FLTM)**

Allows older image data to 'fade' progressively by reducing the image rate — you specify which data are important to you.

### **| Region of Non-Interest (RONI)**

Irrelevant areas of an image can be defined flexibly so they can then be processed with lower resolution and higher compression.

competence

Competence

competence

7.765.50 IP\_DE 29.09.08 DFS 1000

**GEUTEBRÜCK**

Competence in Video Security

GEUTEBRÜCK GmbH  
Im Nassen 7-9 | D-53578 Windhagen  
Tel. +49(0) 2645 137-0 | Fax -999  
sales@geutebrueck.com | www.geutebrueck.com