

EL-C216R

1/3" Color Camera, Digital Signal Processor (DSP), CS Mount, DC 12V, 540 TVL, with IR filter



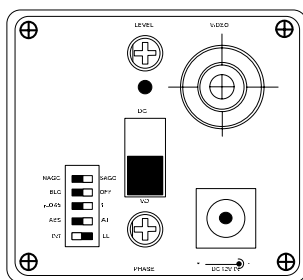
Lens is not included with the camera

Specifications

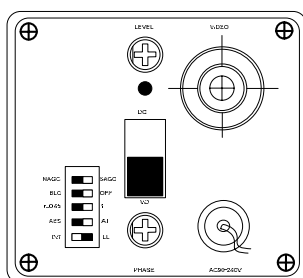
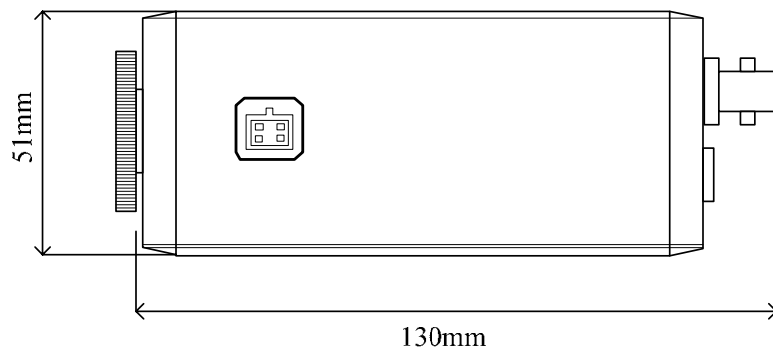
System	NTSC / PAL
Pick-up Device	1/3" Sony Inter-line Transfer Super HAD® CCD
Active Picture Elements	NTSC: 768(H) x 508(V) / PAL: 752(H) x 582(V)
Synchronization System	Internal / Line Lock (Dip switch adjust)
Gamma Correct	0.45
Minimum Illumination	0.1 Lux F 1.2, 0Lux with IR projector
Horizontal Resolution	540 TV Line (Color)
White Balance	Auto Trace White Balance(2500K ~ 9500K)
Electric Shutter	Auto: NTSC 1/60 ~ 1/10K s; PAL: 1/50 ~100k s
S/N Ratio	More than 48 DB (AGC Off)
Auto Gain Control (AGC)	Super AGC / Normal AGC (Dip Switch Adjust)
Line Lock	On / Off (Dip Switch Adjust)
Back Light Compensation (BLC)	On /Off (Dip Switch Adjust)
Video Output	BNC composite: 1.0 Vp-p / 75 ohms
Lens Mount	C / CS Mount
External Adjustment	DC-iris level Control
Internal Adjustment	Auto Electronic Shutter ON/OFF, BLC: ON/OFF,, AGC: Super / Normal, Flickerless; on /off; Soft / Sharp Adjust.
External Connection	DC-Iris (4 pin), Video(BNC), DC 12V Input
IR Filter	850nm IR pass filter

Camera Mount	Mounting socket on bottom or top
Current	180mA (max) DC 12V
Power Supply	DC 12V / DC 12V / AC 24V (EL-C216-W), AC 90V ~ 230V(EL-C214-W)
Power Consumption	2.2W max.
Operation Temperature	-10°C ~ +50°C
Dimension	Refer to drawing
Color	Silver grey

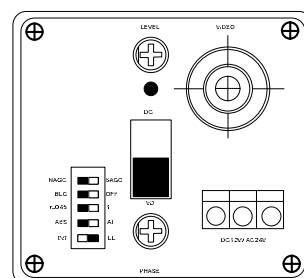
Dimension



EL-C216R Rear View



EL-C214R Rear View



EL-C215R Rear View

Model Selection

EL-C216R-P: DC 12V, PAL

EL-C216R-N: DC 12V, NTSC

EL-C215R-P: DC 12V / AC 24V, PAL

EL-C215R-N: DC 12V / AC 24V, NTSC

EL-C214R-P: AC 90 ~ 230V, PAL

EL-C214-RN: AC 90V ~ 230V, NTSC