



India
का अपना
CCTV

HOAVI (HD ANALOG VIDEO INTERFACE) CAMERA | IP CAMERA | ANALOG CAMERA | HOAVI DVR | NVR | DVR | SOLUTIONS | POWER SUPPLY | ACCESSORIES | VMS

PRODUCT
CATALOGUE

VOL. 3.0-2017



National Award Winner
For Quality

MSME
सूक्ष्म, लघु एवं मध्यम उद्यम
MICRO, SMALL & MEDIUM ENTERPRISES

 made in **INDIA**
made for

Samridhi Automations Pvt. Ltd. established in 2006, as a pioneer and leader in manufacturing Electronic Video Surveillance equipment in India with product presence in more than 10 countries, and in more than 120 cities in India, channel strength of more than 2000 and manufacturing more than half a million security equipment's every year. Its brand Sparsh has revolutionized the Indian security market by being India's first company to manufacture CCTV cameras in India in 2008 and now having global footprints. At our state of the art manufacturing unit at SIDCUL Industrial Area, Haridwar, our focus on indigenous design and manufacture of technologically advanced electronic security devices has put India on the global map for designing and manufacturing high quality and technologically advanced electronic security equipment, thus following the most ambitious campaign of our country – Make in India.

OUR CLIENTELE

PLANTS & OIL



GOVT. & PSU



BANKING



EDUCATION



4 IN 1 CAMERA

1MP SENSOR

- Progressive Scanning CMOS
- HDAVI, HDTV, AHD, CVBS Switchable Video Output
- Real Time HD Video
- 3 Mega Pixel Lens
- 720P Resolution
- Wide Dynamic Range up to 72dB
- Supports ultra low illumination

IR DOME

SC-AHQ410DP-3R1

- 1 MP Image Sensor
- Built in Fixed 3.6 mm Lens
- 14 IR LED
- IR Range 10 to 15 MTR



IR DOME

SC-AHQ410DP-3R2

- 1 MP Image Sensor
- Built in Fixed 3.6 mm Lens
- 24 IR LED
- IR Range 10 to 20 MTR



PLASTIC IR BULLET

SC-AHQ410BP-3R10P

- 1 MP Image Sensor
- Built in Fixed 3.6 mm Lens
- 14 IR LED
- IR Range 10 to 15 MTR



PLASTIC IR BULLET

SC-AHQ410BP-3R20P

- 1 MP Image Sensor
- Built in Fixed 3.6 mm Lens
- 24 IR LED
- IR Range 10 to 20 MTR



METAL IR BULLET

SC-AHQ410BP-3R20

- 1 MP Image Sensor
- Built in Fixed 3.6 mm Lens
- 24 IR LED
- IR Range 10 to 20 MTR



* For Complete Product List Refer to website

HDAVI (HD Analog Video Interface) Camera

1.3/2.19 MP SONY EXMOR

- Progressive Scanning
- 720P/1080P Resolution
- Day & Night
- Supports ultra low illumination
- 3 Mega Pixel Lens
- Real Time HD Video
- Long distance transmission upto 500 mtr

IR DOME

SC-AHT310DP-3R15
SC-AHT310DP-3R25

- 1.3 MP Image Sensor
- HD Resolution: 720P
- Built in Fixed 3.6mm Lens
- IR Range 10 to 25 MTR



IR ARRAY DOME

SC-AHT310DP-3RA2
SC-AHT320DP-6RA2

- 1.3/2.19 MP Image Sensor
- HD Resolution: 720P/1080P
- Built in Fixed 3.6/6mm Lens
- IR Range 10 to 20 MTR
- Bullet Camera also available



Options in 40 Mtr also

IR BULLET

SC-AHT310BP-3R150, SC-AHT310BP-3R250
SC-AHT320BP-6R250, SC-AHT320BP-6R30

- 1.3/2.19 MP Image Sensor
- HD Resolution: 720P/1080P
- Built in Fixed 3.6/6mm Lens
- IR Range 10 to 25 MTR, IP66



Options in 20, 30 & 50 Mtr also

VF IR BULLET

SC-AHT310BP-V212R30
SC-AHT320BP-V212R30

- 1.3/2.19 MP Image Sensor
- HD Resolution: 720P/1080P
- Built in Fixed 2.8-12mm Lens
- IR Range 10 to 30 MTR, IP66



Options in 30 & 60 Mtr also

* For Complete Product List Refer to website

IR DOME

SC-AHT320DP-6R25

- 2.19 MP Image Sensor
- HD Resolution: 1080P
- Built in Fixed 6mm Lens
- IR Range 10 to 25 MTR
- Metal Body also available



Options in 30 Mtr also

PLASTIC IR BULLET

SC-AHT310BP-3R250P, SC-AHT310BP-3R30P
SC-AHT320BP-6R250P, SC-AHT320BP-6R30P

- 1.3/2.19 MP Image Sensor
- HD Resolution: 720P/1080P
- Built in Fixed 3.6/6mm Lens
- IR Range 10 to 25 MTR, IP66



VF IR DOME

SC-AHT310DP-V212R30
SC-AHT320DP-V212R30

- 1.3/2.19 MP Image Sensor
- HD Resolution: 720P/1080P
- Built in VF 2.8-12mm Lens
- IR Range 10 to 30 MTR, IP66



IR BULLET

SC-AHT310BP-8R50
SC-AHT320BP-8R50

- 1.3/2.19 MP Image Sensor
- HD Resolution: 720P/1080P
- Built in Fixed 8mm Lens
- IR Range 40 to 50 MTR, IP66



ARRAY IR BULLET

SC-AHT310BP-3RA20
SC-AHT320BP-6RA20

- 1.3/2.19 MP Image Sensor
- HD Resolution: 720P/1080P
- Built in Fixed 3.6/6mm Lens
- IR Range 10 to 20 MTR, IP66



Options in 40 & 80 Mtr also

IR VANDAL DOME

SC-AHT310DP-3R2LO
SC-AHT320DP-6R2LO

- 1.3/2.19 MP Image Sensor
- HD Resolution: 720P/1080P
- Built in Fixed 3.6/6mm Lens
- IR Range 10 to 20 MTR, IP66/IK10



IP Camera

1 MP/1.3 MP/2 MP IP SERIES

- ONVIF 2.0 compliant
- Image Mirroring -horizontal/vertical
- Motion Detection, Privacy Masking
- Power Over Ethernet (PoE) Support
- Support mobile View
- Audio (Optional)
- H.264/H.265 Compression (2 MP)
- Supports Dual Streaming

DOME

SC-IR10DP-3

- 1 MP Image Sensor
- Resolution: 720P @25FPS
- Built in Fixed 3.6mm Lens

Options in 1.3 & 2 MP also



IR DOME

SC-IR10DP-3R25, SC-IR13DP-3R25
SC-IR20DP-3R25

- 1,1.3, 2 MP Image Sensor
- Resolution: 720P, 960P, 1080P @25FPS
- Built in Fixed 3.6mm Lens
- IR Range 10 to 25 MTR

Also available in PoE



IR BULLET

SC-IR10BP-3R250, SC-IR13BP-3R250
SC-IR20BP-3R250

- 1,1.3, 2 MP Image Sensor
- Resolution: 720P, 960P, 1080P @25FPS
- Built in Fixed 3.6mm Lens
- IR Range 10 to 25 MTR, IP66

Also available in PoE



VANDAL IR DOME

SC-IR10DP-3R2LO, SC-IR13DP-3R2LO
SC-IR20DP-3R2LO

- 1,1.3, 2 MP Image Sensor
- Resolution: 720P, 960P, 1080P @25FPS
- Built in Fixed 3.6mm Lens
- IR Range 10 to 20 MTR, IP66/IK10

Also available in PoE



IR DOME

SC-IC13DP-3R25, SC-IE20DP-3R25

- 1.3 MP, 2 MP Image Sensor
- Resolution: 960P/1080P
- Built in Fixed 3.6mm Lens
- IR Range 10 to 25 MTR

Options in 4 MP also



VANDAL IR DOME

SC-IC13DP-3R2LO, SC-IE20DP-3R2LO

- 1.3 MP, 2 MP Image Sensor
- Resolution: 960P/1080P
- Built in Fixed 3.6mm Lens
- IR Range 10 to 20 MTR, IP66/IK10

Options in 4 MP also



IR BULLET

SC-IC13BP-3R250, SC-IE20BP-3R250

- 1.3 MP, 2 MP Image Sensor
- Resolution: 960P/1080P
- Built in Fixed 3.6mm Lens
- IR Range 10 to 25 MTR, IP66

Options in 4 MP also



PLASTIC IR BULLET

SC-IC13BP-3R25PO, SC-IE20BP-3R25PO

- 1.3 MP, 2 MP Image Sensor
- Resolution: 960P/1080P
- Built in Fixed 3.6mm Lens
- IR Range 10 to 25 MTR, IP66

Options in 4 MP also



ARRAY IR BULLET

SC-IC13BP-8RA40, SC-IE20BP-8RA40

- 1.3 MP, 2 MP Image Sensor
- Resolution: 960P/1080P
- Built in Fixed 8mm
- IR Range 30 to 40 MTR, IP66

Options in 20 & 80 Mtr also



VF IR BULLET

SC-IC13BP-V212R30, SC-IE20BP-V212R30

- 1.3 MP, 2 MP Image Sensor
- Resolution: 960P/1080P
- Built in Fixed 2.8-12mm
- IR Range 10 to 30 MTR, IP66

Options in 40 - 60 Mtr also



NETWORK VIDEO RECORDER (NVR)

- Up to 5 MP resolution
- Supports 3G & wifi
- HDMI, VGA & TV Out
- Full range for all needs
- User - friendly interface
- Reliable data storage
- Multi location CMS
- Perfect support for smart phone

4/8/16 CH NVR

SR-NE0404F201-GH

- Support upto 1080P
- Talk Back RCA
- HDMI, 3G/WI-FI
- HDD: 1 Sata



16 CH NVR

SR-NE1616F302-GHF

- Support upto 5 MP
- Talk Back RCA
- HDMI, 3G/WI-FI
- HDD: 2 Sata



32 CH NVR

SR-NE3232F501-GH

- Support upto 5 MP
- Talk Back RCA
- HDMI, 3G/WI-FI
- HDD: 1 Sata



4 CH NVR

SR-NE0404F201-GHP

- Support upto 2 MP
- Talk Back RCA
- HDMI, 3G/WI-FI
- HDD: 1 Sata | 4 Port PoE



Options in 2 SATA also

4/8 CH POE Model Also Available

* For Complete Product List Refer to website

DIGITAL VIDEO RECORDER (DVR)

HDAVI METAL DVR RETAIL

SR-PHDM0401SN01-H



- HDD: 1 SATA (Max 6 TB/port)
- HD Resolution: 1080P lite @12FPS/ 720P@25FPS
- Audio Channel: 1CH
- Video Channel: 4Ch
- 5 in 1 DVR

HDAVI METAL DVR RETAIL

SR-PHDM0801SN01-H



- HDD: 1 SATA (Max 6 TB/port)
- HD Resolution: 1080P lite @12FPS/ 720P@25FPS
- Audio Channel: 1CH
- Video Channel: 8Ch
- 5 in 1 DVR

Option in 16 CH also

TRADE
SERIES

HDAVI DVR 1080P LITE TRADE

SR-THD0404FN01-GH



- HDD: 1 SATA (Max 6 TB/port)
- HD Resolution: 1080P lite @12FPS/ 720P@25FPS
- Audio Channel: 4CH
- Video Channel: 4Ch
- 3G /Wi-Fi support

Options in 8 & 16 CH also

HDAVI DVR 1080P LITE TRADE

SR-THD0404FN02-GH



- HDD: 2 SATA (Max 6 TB/port)
- HD Resolution: 1080P lite @12FPS/ 720P@25FPS
- Audio Channel: 4CH
- Video Channel: 4Ch
- 3G /Wi-Fi support

Options in 8 & 16 CH also

HDAVI DVR 1080P TRADE

SR-THD0404S201-GH



- HDD: 1 SATA (Max 6 TB/port)
- HD Resolution: 1080P @12FPS | 720P @25 FPS
- Audio Channel: 4CH
- Video Channel: 4Ch
- 3G /Wi-Fi support

Options in 8 CH also

HDAVI DVR 1080P TRADE

SR-THD0404F202-GH



- HDD: 2 SATA (Max 6 TB/port)
- HD Resolution: 1080P | 720P
- Audio Channel: 4CH
- Video Channel: 4Ch
- 3G /Wi-Fi support

Options in 8 & 16 CH also

* For Complete Product List Refer to website

DUMMY SMOKE BODY CAMERA

SR-AHT310SP-3SM

- 1.3 MP Image Sensor
- HD Resolution: 720P
- Built in Fixed 3.6mm

Option in 1.3/1.37/2/2.43 MP HD Also



CLOCK

SR-AHT310SP-3CL

- 1.3 MP Image Sensor
- HD Resolution: 720P
- Built in Fixed 3.7mm



PIN HOLE CAMERA

SC-AHT310SP-3MP

- 1.3 MP Image Sensor
- HD Resolution: 720P
- Built in Fixed 3.7mm



PIR

SC-AHT310SP-3PR

- 1.3 MP Image Sensor
- HD Resolution: 720P
- Built in Fixed 3.7mm



MIRROR CAMERA

SC-AHT310SP-3M

- 1.3 MP Image Sensor
- HD Resolution: 720P
- Built in Fixed 3.6mm



UFO DOME

SC-AHT310SP-3CD

- 1.3 MP Image Sensor
- HD Resolution: 720P
- Built in Fixed 3.6mm



* Available in all Product Range

* For Complete Product List Refer to website

IP PTZ CAMERA

OUTDOOR SPEED DOME

SS-IR200320P-C3

- 2 MP Image Sensor
- 3D Intelligent Zoom
- IR range: 100Mtr
- IP 66, 20X Optical 16X Digital (Total 320X)
- SD Card Upto 64 GB
- Auto Track



PTZ BULLET CAMERA

SS-IRB20010P-D

- 2 MP Image Sensor
- Panning Range: 260°
- IR range: 50-80Mtr
- 10X Optical
- SD Card Upto 64 GB



HD PTZ CAMERA

IR SPEED DOME

SS-AHR20020P-D

- 2 MP Image Sensor
- HD Resolution: 1080P
- IR range: 120Mtr
- IP 66, 20X Optical



IR MINI OUTDOOR SPEED DOME

SS-AHR20010P-D

- 2 MP Image Sensor
- HD Resolution: 1080P
- IR range: 50Mtr
- IP 66, 10X Optical



HD ENTERPRISE SERIES

**ENTERPRISE
SERIES**

- Digital WDR
- 2D DNR, Eclipse
- Defect Pixel Correction
- Privacy Masking
- Defog
- Motion Detection
- Support UTC: Parameter Control using same Coax Cable

VANDAL IR DOME

SC-AHE320DP-6R25LO



ARRAY IR BULLET

SC-AHE320BP-16RA80



IP ENTERPRISE SERIES

- H.264 Compression
- CPU: TI DM365 SoC | DM368
- Direct Storage to NAS/FTP
- Motion Detection
- Heart Keep Alive Mechanism
- 3G/wifi, Store & Forward
- Privacy Masking

VF VANDAL IR DOME

SC-IM20DSP-V212R2PL-S



VF IR BULLET

SC-IM20BSP-V922R60-S



MOTORIZED ZOOM CAMERA

AF IR BULLET

SC-IE20BSP-Z212R40

- 2.38 MP Image Sensor
- HD Resolution: 1080P
- Motorized Zoom 2.8-12mm
- 3X optical zoom, digital 10X
- SD Card, upto 32 GB



AF IR DOME

SC-IE20DSP-Z212R30

- 2.38 MP Image Sensor
- HD Resolution: 1080P
- Motorized Zoom 2.8-12mm
- 3X optical zoom, digital 10X
- SD Card, upto 32 GB



* For Complete Product List Refer to website

Smriti Verma
Assistant Manager
ID- S00182



Sumit Behl
Sales Director
ID- SP0164



Jatin Virmani
Officer
ID- S00214



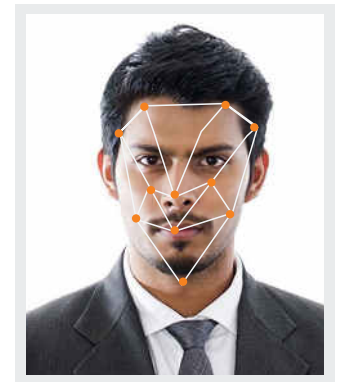
Secure India with Sparsh **FACE RECOGNITION TECHNOLOGY**

FACE DETECTION | FACE SEARCH | FACE RECOGNITION



APPLICATIONS:

- Black List Alarm (Terrorists, Shoplifters, Known Offenders)
- VIP Identification
- Restricted Zone Security/Lobby Management
- Face Verification based Access Control & Attendance System
- Forensic Analysis
- Viewership Analytics (Face Count, Face Presence, Face Frequency)
- Demographic Profiling(Age Group and Gender Detection)





‘Saathi’
Always with you
you are Safe & Protected
everywhere... everytime

A mini portable battery powered safety device tracker for tracking children, women and elderly person. The device is a GPS/ GSM/GPRS enabled. It comes with a panic button which when pressed starts sending the user’s locations, messages on the server. It comes with the mobile app which helps a user to keep track of any person carrying the Saathi device.

FEATURES

- User-friendly, Easy to Use
- Compact, can be easily hanged around neck
- Real Time GPS Tracking
- Mic, Speaker to make a call
- Rigid ABS casing
- Low battery notification

Child Safety



Personal Safety



Women Safety



Elderly Care

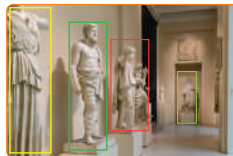




INTELLIGENT VIDEO ANALYTICS

FEATURES

- Line Crossing
- Intelligent Video summary
- Missing Object Detection
- Abandoned Object Detection
- Live Event and Alarm Monitoring
- People Counting
- Building Video analysis Frame work

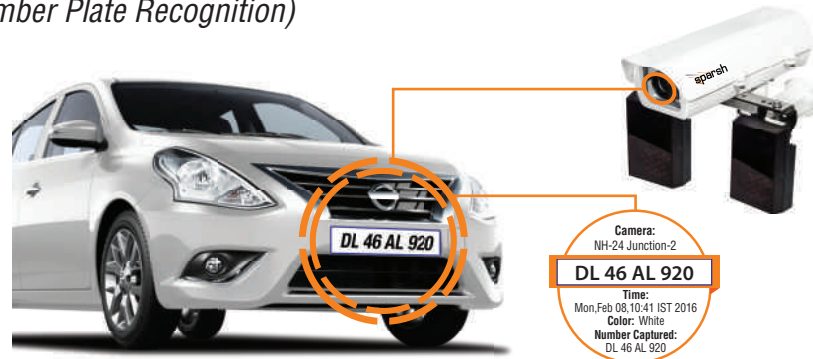


ANPR SOLUTIONS

(Automatic Number Plate Recognition)

FEATURES

- Smart shutter technology
- Integrated IR illuminator
- Detect & reads license plates automatically
- The System can process vehicle with Speed up to 80 Km/Hr
- Dedicated Design Provides Stability & Reliability 24/7
- Day/Night Performance for Traffic Monitoring
- Headlight Filter for Brilliant Night Image



TOLL PLAZA & PARKING MANAGEMENT SOLUTION

FEATURES

- Ability to display live-view from cameras which are deployed at parking location (in/out)
- Record snap-shot and information of the vehicle
- Calculate parking time and parking charges
- Statistical reporting
- License plate recognition based Report



MOBILE SURVEILLANCE

INTELLIGENT MOBILE SURVEILLANCE SOLUTIONS

FEATURES

- GPS tracking of school bus
- 4 CH Audio, Video
- In-cabin announcement
- Tracking of driver behaviour
- Connected through central command at school
- Available in 720 P | 960 H | DI
- Build in 3G/4G, GPS, WiFi



EVENT CAMERA SOLUTIONS

SURVEILLANCE ON THE GO

FEATURES

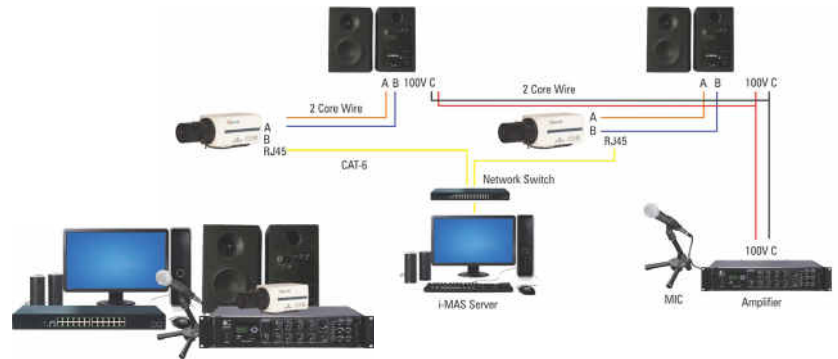
- Self Contained Rapid Deployment Unit
- Use 3G Cellular Network To Send Video Stream To Remote Location
- Low Bandwidth And Power Consumption
- 3G/2G/Wi-Fi Data Communications
- High-Resolution Upto 1.3Mp
- Robust, Lightweight And Portable
- Battery Backup Upto 4 Hours



i-MAS

INTELLIGENT MONITORING & ANNOUNCEMENT SYSTEM

i-MAS - Connection Diagram



FEATURES

- Addressing large gatherings
- Recording and Play-back of Recorded Message
- Two-way Communication
- Supervising area/part of the premises

SOLAR POWERED CAMERA

FEATURES

- Totally self contained wireless digital IP camera
- Use cellular network to send video stream to remote location
- Low bandwidth and power consumption
- 3G/2G/Wi-Fi data communications
- High-resolution up to 1.3MP/2MP
- Battery backup upto 4 hours



ACCESSORIES



SWITCHER



HOUSING



IR ILLUMINATOR



TELEMETRY RECEIVER



MOUNT



SURGE PROTECTOR



ACTIVE UTP BALUN



VIDEO AMPLIFIER



UTP BALUN



LENS

POWER SUPPLY



LINEAR



SMPS






ADAPTER



SMART SMPS

The world map is only for illustration purpose

-  Manufacturing Units
-  International & Domestic Offices
-  International Reach



Toll Free Customer Support Number:

1800 2700 590

Samridhi Automations Pvt. Ltd.

Corporate Office

F-365, Sector-63
Noida-201307, U.P. (India)
Tel.: +91 120 4518900
Fax.: +91 120 4518901

Manufacturing Office

Plot No. 75, Sector-7, IIE
SIDCUL, Haridwar-249403
Uttarakhand (India)
Tel.: +91 1334 645011

Overseas Office (US)

Sparsh Security Systems
LLC, 264 Strawberry Circle
Cranberry Twp, PA 16066
Tel.: +1724 776 7518
info@sparshsecurity.com

info@sparshsecuritech.com | sales@sparshsecuritech.com | www.sparshsecuritech.com

For more information, please contact:



BRANCH:

Delhi | Mumbai | Kolkata | Coimbatore | Noida | Haridwar | Himachal Pradesh (Dharamsala) | Ludhiyana
Jaipur | Panipat | Jammu & Kashmir | Odisha

CERTIFICATION: ISO 14001:2015 | ISO 9001:2015 | IEC | EN | CE | FC | RoHS |   

* Due to continuous technology up-gradation, designs and specifications are subject to change without notice. ** The photos and images used here only for reference purpose. The actual product may vary. *** The logos used here carry no commercial usage. They belong to their respective owners.