

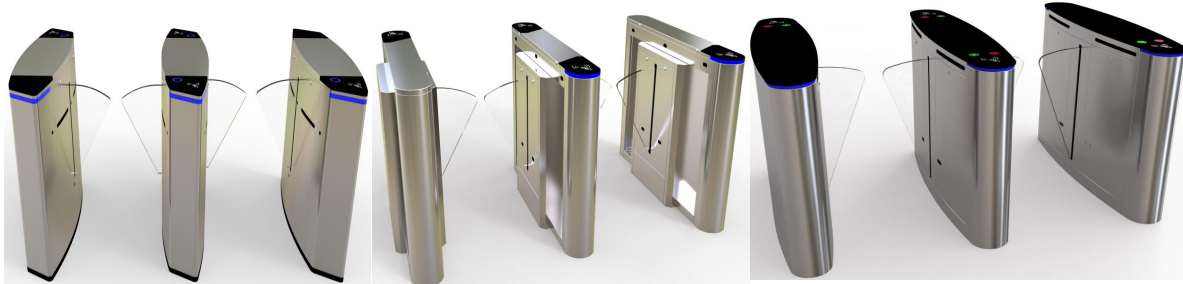


## Jayda Industry Co., Limited

Add: Room 501, No.6, West 4th Alley, XingWei Village, FuYong Town, BaoAn District, Shenzhen, China Website: [www.jaydaygate.com](http://www.jaydaygate.com)

Skype: lukezhang821 E-mail: [luke@jaydagate.com](mailto:luke@jaydagate.com) Tel: +86-13548106515

### Flap Gate



JDYZ-9

JDYZ-22

JDYZ-23

### General Description

#### Housing

Made from #304 stainless steel sheet and sharp angles and protrusions completely eliminated, it gives users the max protection against hurt. Meanwhile, dust/ waterproof hinged locked cover provides maximum access to the controller and other mechanism, thus easy to debug and maintain if any problems occur. Finally, the support is equipped for optional access control devices, such as card reader, fingerprint reader, facial recognition system., etc

#### Control Board

DIP switch is equipped on the control board, by which users are able to program the operational status freely, e.g. work mode, open/close time, etc. There are some LED indicators on the controller which indicate working status, by which users are easy to find out problems and solutions.

#### High Integration

Jayda flap gates are equipped with standard interfaces for connection with different access control systems. Because of wide integration, users are free to use different access devices to customize special turnstile systems.

#### Safety

Pedestrians pass through when opening, the arm will fix steadily with out jumping back, and no hurt/risk for pedestrian occurs.

### Features

1. Set work mode from control board directly.
2. Offer wide integration to be compatible with door access control system/consumption system/biometric recognition system/ESD system/ticket system and so on.
3. Equipped with shock absorption device and anti-reverse device.
4. 60° anti-reverse function available within specific time (the system is 10s). If nobody doesn't pass through, the system will cancel the authority automatically (reset time is 1~60s). It will open automatically when power off, and close automatically after power on
6. Equipped with LED direction arrow plate.
7. Able to be managed and long-range controlled directly by computer.

### Technical Parameters

Start-up Time	3 seconds
Open Time	0.2 second
Dimensions	1400*300*980mm
Direction	Unidirectional or bi-directional pass
Work Environment	Indoor or outdoor
IP Rate	IP45
Pass Speed	35~40 persons/minute
Life Cycle	3 million times
Work Temperature	Indoor/outdoor(with a tent over) -10°C—50°C Relative humidity: ≤90%, no condensation
Input Interface	Dry contact signal or +12V level signal or DC12V pulse signal with a width of more than 100ms.Driving current: > 10mA
Communication Interface	RS485, TCP/IP
Housing Material	#304 stainless sheet
Working Voltage	AC110/220 ±10% V/50 ±10% HZ (specify before manufacturing)
Motor Type	Brush motor 24V 40W
Power Consumption	5A

### System Diagram

#### Access Control System

