

# 1920x1080P

## High Resolution Digital Splitter

1920x1080P

No Video Quality Loss 6channels  
This is What We Can Do!



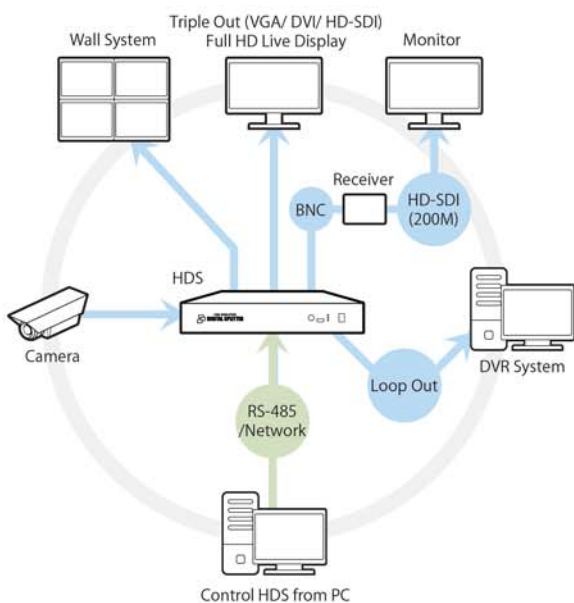
Model No. **HDS-F16Pro**

### . Specification

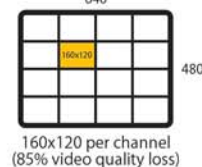
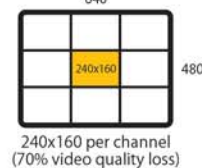
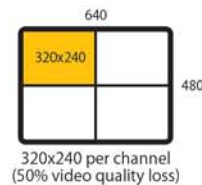
MODEL		HDS-F16Pro
Video	Video Input	Analog(Composite) 16 Channels
	Video Output	D-SUB, DVI, Loop-Out, HD-SDI(BNC)
	Video Out Resolution	1920x1080 / 1280x1024 / 1024x768 (Selectable)
	Screen Division	(1, 4, 9, 11A, 11B, 12, 13, 14, 16A, 16B) Various Division is Available
	Video Process	Deinterlacing & Scaling
Network	Interface	RJ-45 LAN (10 / 100 Base Ethernet)
	Protocol	TCP / IP
	Program	Controller Program is Supported
Serial Interface		RS-485 / 422, RS-232C (Firmware Upgrade)
OSD (On Screen Display)		Only English (Only English & Digit within 9 words)
GUI		Multi-Language (Korean, English, Spanish, Japanese, German, Swedish, Finnish)
Interface		Remote Controller, PS2 Mouse, Virtual Key board, Network / RS-485
Password		Available, Up to 7 Users
System Restore		Watchdog (Auto Restart), Blackout : Auto Power on Function
Power		110~240V AC, 50/60Hz
Power Consumption		52W ~ 55W
Dimension		423mm(W) x 312mm(D) x 40mm(H)
Weight		4.0Kg

### . Features

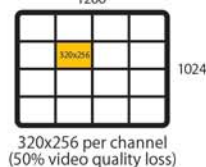
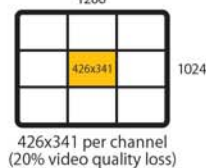
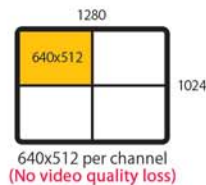
- . High Definition Video Splitter
- . Support Various Video-out Resolutions (1280x1024, 1920x1080)
- . Support Various Screen Division Modes
- . Support Dual Video Out (DVI, VGA)
- . Support RS-232 and RS-485 Control
- . Support Color Adjustment for each channel
- . Support OSD per Channel
- . Provide SDK Program to Control HDS from PC via TCP/IP or RS485



#### ANALOG (640x480)



#### HD (1280x1024)



#### Full HD (1920x1080)

