



# 4/8/16ch Real Time H.264 DVR

## Engineered to Satisfy Your Requirements for Operation & Performance

### > Features

- Full series 4/8/16ch models with same styling and operation interface
- Real time recording with your choice of D1, half D1 and CIF resolutions
- Selection of Cat5 or Coaxial cabling
- Superb Graphic User Interface
- Soft channel swap for display flexibility
- Independent camera and recording profile for each channel
- Day and night camera recording profile
- Recording Time Limited defined by user
- Live and Playback in PIP for all channels
- Instant 1 Minute Playback
- Full PTZ Control by Mouse
- Picture Freeze and Zoom
- Events Logging and Text Export
- Multiple Sensors/Cameras Mapping
- 3G Mobile Viewing + multiple Emails notification with photo
- Multilingual OSD
- Customization Available



Slime type for 4/8ch DVR (Single HDD)



Dual-HDD type for 4/8/16ch DVR



DVD / Mobile Rack type for 4/8/16ch DVR

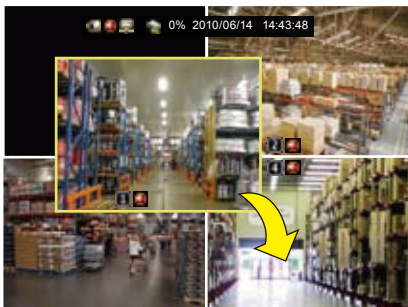
### > Benift

- The **Rekon series DVRs** are probably the H.264 DVR you have been waiting for, you will know it when you get to play with it. With expertise and experience accumulated over the years making DVRs, we engineered the Rekon series to satisfy requirements from distributors to end users.
- The end user will really enjoy easy operation of the DVR with super friendly graphic interface. Intuitively arranged menu makes setting and adjustment of Rekon an effortless job. And the advanced features packed in Rekon will surely cover most of the daily operations expected from a capable DVR.

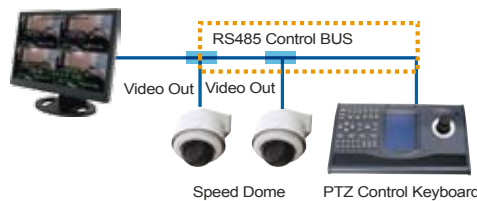
- For installers, we offer the flexibility of choosing conventional **Coaxial cable or Cat5 cabling**. They will definitely love the **soft channel swap feature which allows them to drag-and-drop any channel to desired position** without physically pulling out and reconnecting the camera connectors.

- The Rekon series DVR comes with **Fan-less Design** and built with high quality and craftsmanship. Coupled with our offer 2-year factory warranty, we want to make sure that margin of distributors will not be eaten up by expensive sales/product training and endless after-sales service.

- Most importantly, if you find Rekon does not have what you need, we will be gladly customizing it for you, just let us know.



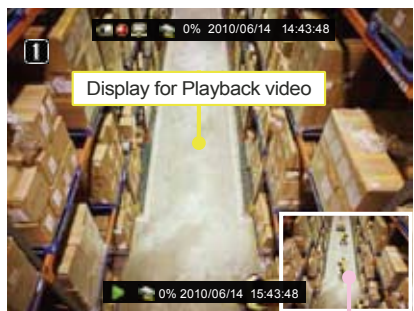
>> Soft Channel Swap via mouse drag-and-drop



>> Full PTZ control by mouse



>> PC Player and IE Viewer for remote control



>> Picture-in-Picture display for Live/Playback



>> Events Logging and Export



>> 3G mobile viewing

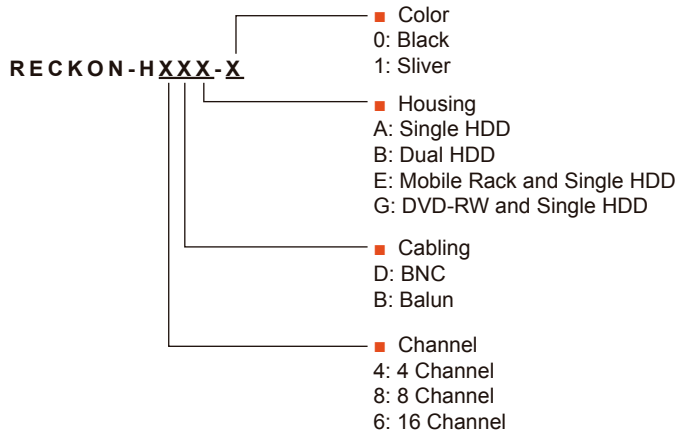
>> MVS (Multi Viewer System)



# 4/8/16ch Real Time H.264 DVR

## Engineered to Satisfy Your Requirements for Operation & Performance

### Order Information



▶▶ Single-HDD type for 4/8ch DVR (Single HDD)



▶▶ Dual-HDD type for 4/8/16ch DVR



▶▶ DVD / Mobile Rack type for 4/8/16ch DVR

### Specification

Models	REKON-H4	REKON-H8	REKON-H6
<b>VIDEO</b>			
System	NTSC/PAL (Auto Detection)		
Compression	H.264		
Input	BNC x 4, Cat5 (RJ45 x 4) Optional	BNC x 8, Cat5 (RJ45 x 8) Optional	BNC x 16
Output	Video Out x 2, VGA x 1		Video Out x 1, Spot Monitor x 1, VGA x 1
Display Frame Rate	120/100 fps	240/200 fps	480/400 fps
Display Resolution	720 x 480 / 720 x 576 (NTSC / PAL), VGA: 1280 x 1024		
Display Mode	1 / 4 / Sequence / PIP	1 / 4 / 8 / 1+7 / Sequence / PIP	1 / 4 / 8 / (1+7) / (1+9) / 16 / Sequence / PIP
<b>AUDIO</b>			
Audio In / Out	1 / 1		
<b>RECORDING / PLAYBACK</b>			
Recording Resolution (NTSC / PAL)	D1: 720x480 / 720x576, Half D1: 720x240 / 720x288, CIF: 360x240 / 360x288		
Recording Rate (NTSC / PAL)	D1: 60/50 fps Half D1: 120/100 fps CIF: 120/100 fps	D1: 60/50 fps Half D1: 120/100 fps CIF: 240/200 fps	D1: 120/1000 fps Half D1: 240/200 fps CIF: 480/400 fps
Recording Mode	Time (Continuous) / Motion Detection / Sensor / Motion & Sensor		
Playback	Search by Time / Event / Calendar		
<b>SENSOR / ALARM</b>			
Sensor / Alarm	4 / 1		16 / 1
<b>STORAGE / BACKUP</b>			
Storage Support	SATA HDD x 2 (Max)		
Backup Device	USB Stick / DVD-RW (Optional)		
<b>CONNECTOR</b>			
USB	USB 2.0 Port x 1		
Mouse	USB Mouse Port x 1		
IR Extender	IR Jack and Cable (Optional)		
<b>OSD / CONTROL</b>			
GUI / Control Interface	YES / Mouse, Keypad, IR Remote Controller		
Multilingual Menu	YES		
Access Authentication	YES		
Digital Zoom	Yes, 1x~8x, Both in Live Mode & Playback Mode		
PIP	YES, ON/OFF		
Channel Swap	Yes, via Mouse Drag-and-Drop		
PTZ control	Yes, RS485, Via Mouse or Keyboard		
Firmware Upgrade	USB / Network		
<b>NETWORK</b>			
Network	10/100 Ethernet (RJ-45)		
Network Protocol	TCP/IP, Static IP, DHCP, PPPoE(ADSL), DDNS		
Network Remote	Client Program and IE Browser		
Multilingual OSD	YES		
3G Mobile Viewing	YES		
E-mail Notification	YES		
<b>OTHER INFO</b>			
Power Supply	Input: AC100~240V 50/60Hz, Output: DC12V		
Operating Temperature	5°C~45°C		
Dimension (WxHxD cm)	Single HDD Type: 24.0 x 63.8 x 19.8, Dual HDD Type: 28.8 x 5.4 x 21.9, Mobile Rack Type: 28.8 x 5.4 x 21.9		