

# ICS: Exemplary performance

» Bundesschulzentrum (Federal School Centre) St. Veit: «  
safe and sound with EVVA ICS



Photos: Kurt Kuball

The Federal School Centre in St. Veit built in 1984 was comprehensively renovated and restructured. The measures were completed in 2012. Today, the school centre is equipped with the very latest state-of-the-art technology. During the course of the restructuring measures, the entire centre was equipped with the EVVA ICS locking system. The experienced EVVA partner, Gabi Köppl, was entrusted with the installation of the master key systems.

The Federal School Centre now combines a grammar school with a secondary school for economic professions (HLW). The two different types of formal schooling can be functionally separated. This has created spacious working areas for the teachers. There is now an additional 1,500 m<sup>2</sup> usable floor space available. All rooms in the old building were renovated. Following the renovation and expansion, the entire school building is now barrier free. Changes were in need in terms of fire protection. The EVVA ICS (Inner Code System) locking system will make sure that the building is safe and secure.

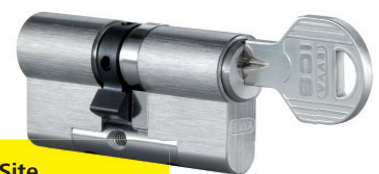
#### 40 user groups, wide range of authorities

The Federal School Centre St. Veit accommodates some 1,200 pupils and 120 teachers. About 40 user groups, which also include teachers, school management, janitor as well as cleaning staff have been set up and differentiated for both schools. Each key is adapted to the needs of its owner. The authorizations of the teachers depend on the type of school and on the respective department.

Master keys are only required by school management, the janitor and the fire department. This is a special challenge for a mechanical locking system.

#### ICS: Unique technology & professional application

With its unique and sophisticated technology, ICS is optimally suited for complex master key systems and a wide variety of user groups. The concealed, inner recesses make unauthorised duplication of keys virtually impossible. Inserting the ICS key into the cylinder is particularly easy due to the reversible key and the key's specially developed tip. The high-quality nickel silver alloy make the key durable and resistant to wear. The ICS cylinder is produced in modular version (SYMO) and can be adapted to the relevant door requirements directly on-site.



#### EVVA Technology On Site Mechanical ICS Locking System

- » 435 ICS cylinders
- » 295 keys