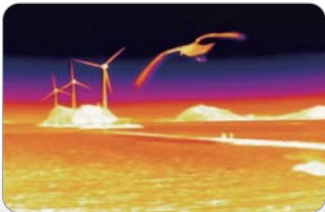


NOT ON MY WATCH

TBT | WE DO FUTURE



Thermal Imaging Camera

THERMAL IMAGING WEATHERPROOF CAMERA ULTIMATE SURVEILLANCE SOLUTION

THERMAL IMAGING CAMERA

- 720 x 480 Super Clear Video Resolution (Thermal Imaging) with patented QIET(Quality Image Enhancement Technology)
- AOZ (Advanced Optimal Zoom)
- Built-in TEC (Thermo Electric Controller)
- Direct Short Key Controls on Control Board
- Lowest NETD : 40mk

MECHANISM

- 1,000 Hours Salt Spraying Test Passed
- External OSD Key Control (Open Type Control Panel)
- Concealed Cable Through Type with Junction Box Included
- Easy to Adjust 3-Axis Bracket

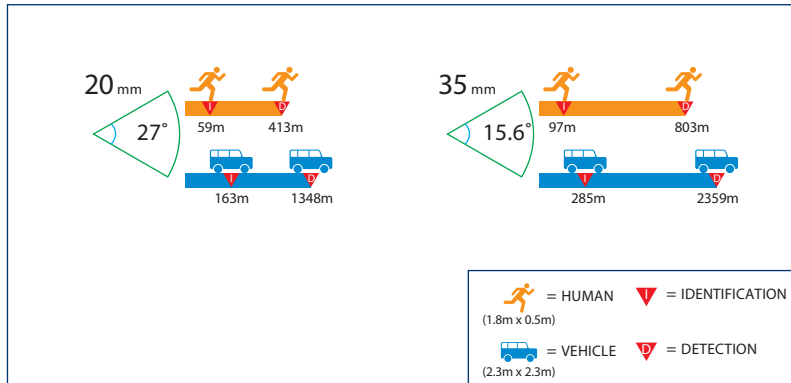


ULTIMATE SURVEILLANCE SOLUTION

TBT | WE DO FUTURE

TPV-SW is a stable static night vision camera equipped with a micro bolometer thermal imaging sensor. Embedded with QIET(Quality Imaging Enhancement Technology), AOZ(Advanced Optimal Zoom) and Virtual PTZ it is ideal for short- and medium-range perimeter surveillance purposes and provides remarkable sharp and detailed images under ultimate harsh weather conditions.

EXCELLENT RANGE PERFORMANCE



DIMENSIONS



SPECIFICATIONS

Model	TPV - SW	
THERMAL MODULE		
SENSOR		
Thermal Sensor	Uncooled Micro Bolometer	
Pixel Pitch	25μm	
Wave Length	8 ~ 14μm	
NETD	40mK / F1.0	
Output Frequency	NTSC : 59.94Hz (30fps), PAL : 50Hz (25fps)	
Video Output	CVBS : 1.0Vp-p / 75Ω	
Resolution	720 x 480 (NTSC) / 720 x 576 (PAL)	
Lens	20mm (Basic), 35mm (Option)	
FUNCTION		
Calibration	Auto / Manual / Interval (10sec~3,600sec, 10sec step) Mode Selectable	
Image Flip	Vertical, Horizontal ON / OFF	
Inverse Mode	ON / OFF	
Freeze Mode	ON / OFF	
AGC Mode	ON (5 steps) / OFF	
Temperature Range Process	MIN / MAX Temperature Range Selectable	
Output Mode	NTSC / PAL Mode Selectable	
Image Mode	B/W and Three Color Modes	
D-Zoom(AOZ)	x4 (15 steps)	
OSD Menu	Yes	
MECHANISM		
Dimensions	239mm(W) x 112mm(H) x 145mm(D)	
Weight	2350g	
Certifications	CE, FCC, IP66	
Outside Control	Focus, OSD	
POWER	AC Type	DC Type
Power Consumption	AC24V 1.1A 13.2W (Peak)	DC12V 1.1A 13.2W (Normal Status) DC12V 1.4A 16.8W (Peak)
Power Supply	AC24V 1.5A	DC12V 1.9A
ETC.		
External Interface	Rs-232 (9600 ~ 38400bps / N / 8 / 1), KEYPAD (5Key)	
Operating Temperature	-35°C ~ 55°C	

FEATURES

- 720 x 480 Super Clear Video Resolution (Thermal Imaging) with patented QIET(Quality Image Enhancement Technology)
- AOZ (Advanced Optimal Zoom)
- Built-in TEC (Thermo Electric Controller)
- Direct Short Key Controls on Control Board
- Lowest NETD : 40mk
- 1,000 Hours Salt Spraying Test Passed
- External OSD Key Control (Open Type Control Panel)
- Concealed Cable Through Type with Junction Box Included
- Easy to Adjust 3-Axis Bracket

VARIOUS COLOR SETS

