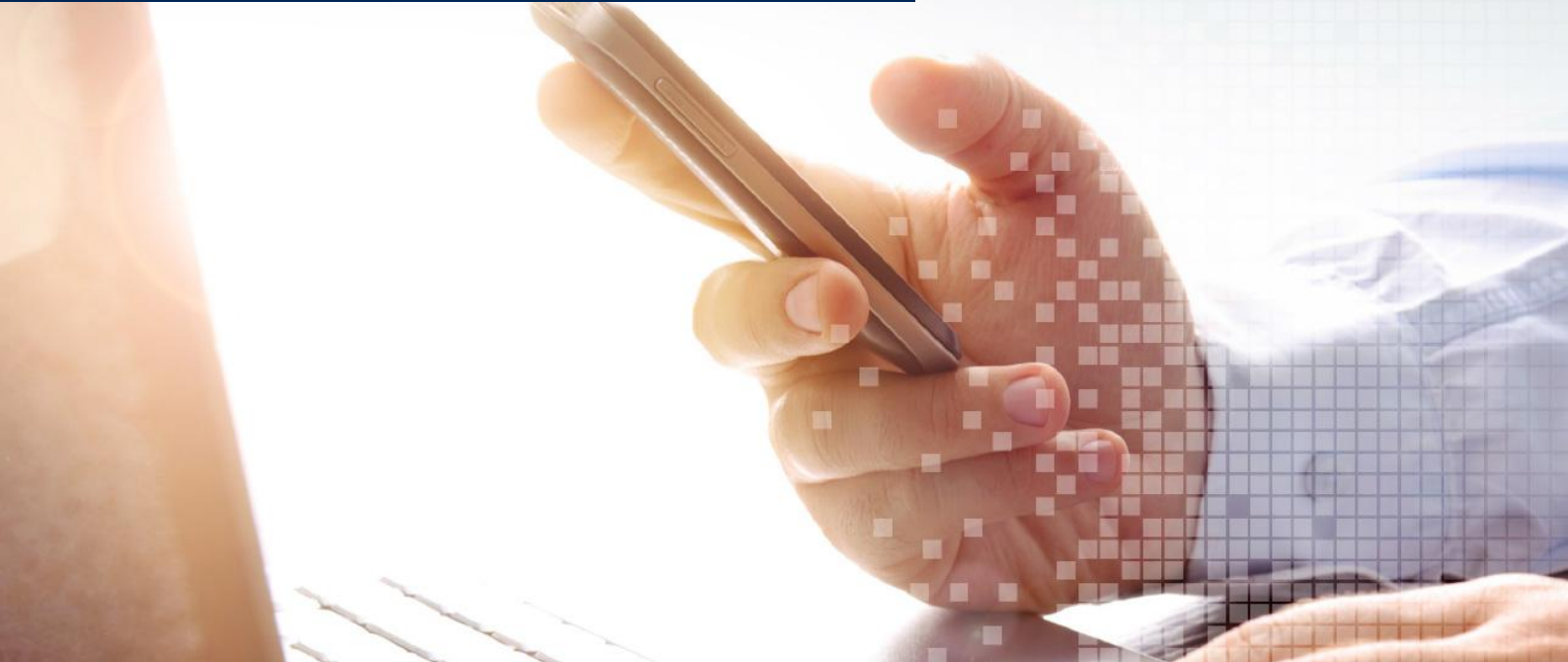


INSTALLATION GUIDE



IDVision

Autor	M. Kühl
Version	1.0
Datum	April 2014
Status	Final
Dokumentname	Installation_guide_IDVision_EN_v01.00.docx



Copyright © ID-ware International B.V. All rights reserved.

ID-ware MAKES NO WARRANTIES, EXPRESS, IMPLIED OR STATUTORY, AS TO THE INFORMATION IN THIS DOCUMENT. Complying with all applicable copyright laws is the responsibility of the user. Without limiting the rights under copyright, no part of this document may be reproduced, stored in or introduced into a retrieval system, or transmitted in any form or by any means (electronic, mechanical, photocopying, recording, or otherwise), or for any purpose, without the express written permission of ID-ware.

ID-ware may have patents, patent applications, trademarks, copyrights, or other intellectual property rights covering subject matter in this document. Except as expressly provided in any written license agreement from ID-ware, the furnishing of this document does not give you any license to these patents, trademarks, copyrights, or other intellectual property.

Content

Content

1. Introduction	4
1.1 Scope	4
1.2 Reference documents	5
1.3 Change history	5
1.4 Terms and conventions	5
2. Software installation	6
2.1 Requirements	6
2.2 Installation	6
2.3 Registration	8
2.4 Configuration	8
2.4.1 Global settings	8
2.4.2 Printer settings	9
2.4.3 Encoding settings	9

1. Introduction

1.1 Scope

In this document the installation and configuration process of IDVision is described.

1.2 Reference documents

Document name	ID	Author	Date/Version
-			

1.3 Change history

Version	Date	Author	Changes
1.0	April 2014	M. Kühl	Initial version

1.4 Terms and conventions

Abbreviation/Term	Description
-------------------	-------------

2. Software installation

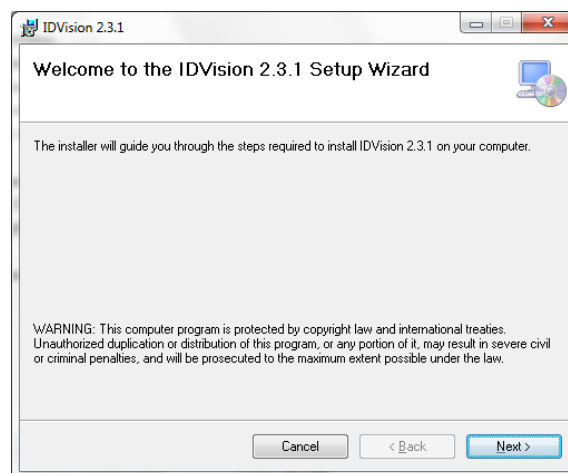
2.1 Requirements

The following system requirements must be met for the installation of IDVision.

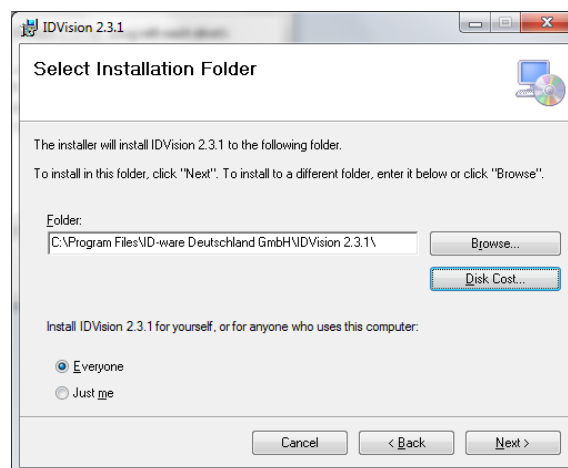
- Windows 7 x64
- .Net Framework 3.5 SP1
- Local administrator rights for the installation and registration

2.2 Installation

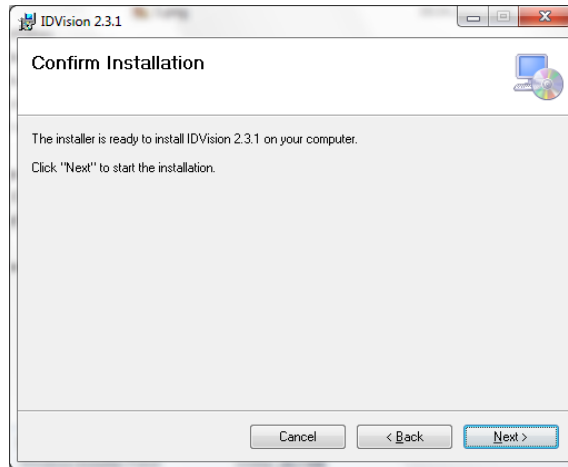
The installation process of IDVision is started by running the installation package. A wizard guides you through the installation process.



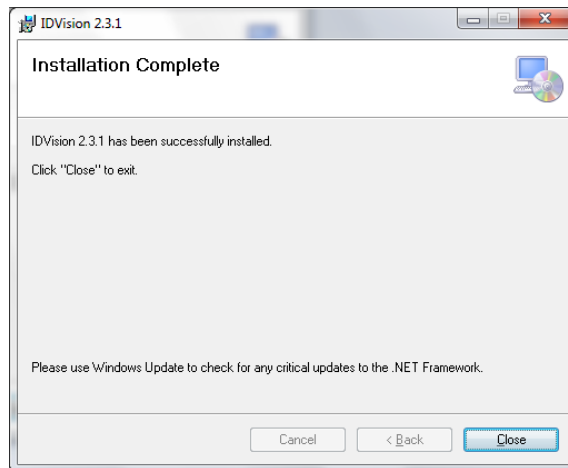
The installation process is started on the Next button.



Then the installation directory is specified and defined, for whom the installation should be available.



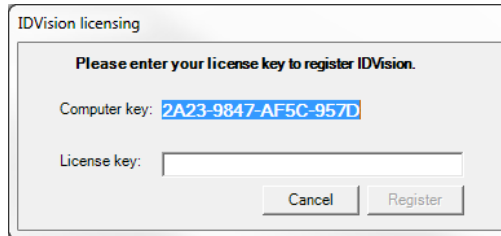
The IDVision installation must be finally confirmed.



Finally, the installation process will be finished by the Close button.

2.3 Registration

The first time the IDVision configuration (IDVision settings - shortcut on the desktop) call starts the registration process of the IDVision installation.



Please contact ID-ware for obtaining the license key:

Telephone: +49 (6142) 301 80 80-0

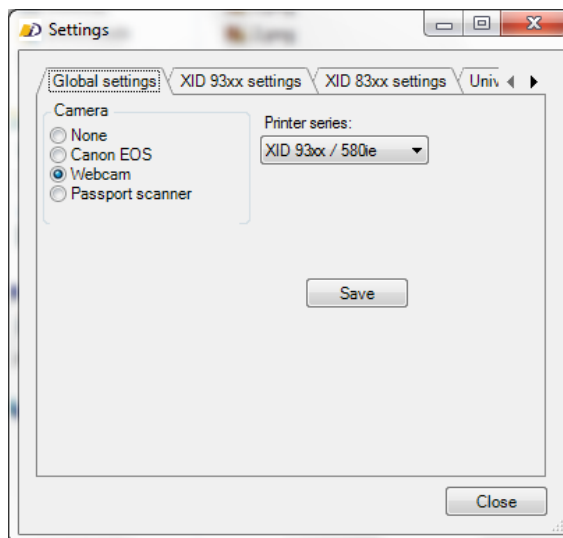
Email: servicedesk@id-ware.com

2.4 Configuration

The configuration dialog of IDVision is launched from the desktop shortcut "IDVision settings". There is a separate configuration area for each IDVision module.

2.4.1 Global settings

The configuration "Global settings" is used to configure the photo capturing source used and the printing module used.



Camera

For photo capture various sources are available. Within the Camera configuration photo capture hardware is selected.

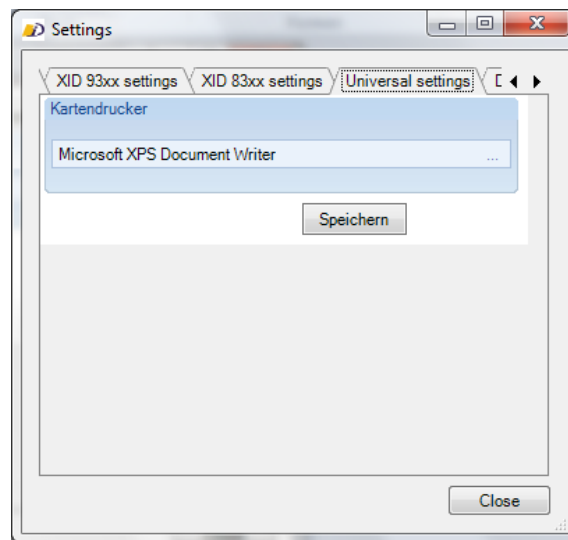
Printerseries

For the personalization of ID cards different printer series are available. If the cards are only optically personalized (printed), please select Universal from the selection menu. In the case of optical and electronic personalization, please choose the appropriate printer series.

2.4.2 Printer settings

Depending on the selected printer series in the configuration section of the Global Settings card printer is configured in the corresponding area. The following table represents the relationship.

Printer series	Configuration area
Universal	Universal settings
XID93xx / 580ie	XID 93xx settings
XID 83xx	XID 83xx settings



2.4.3 Encoding settings

If an electronic personalization will be performed the used encoding hardware must be configured. For the configuration of Mifare DESFire and Mifare Classic encodings separate configuration areas are used.

