

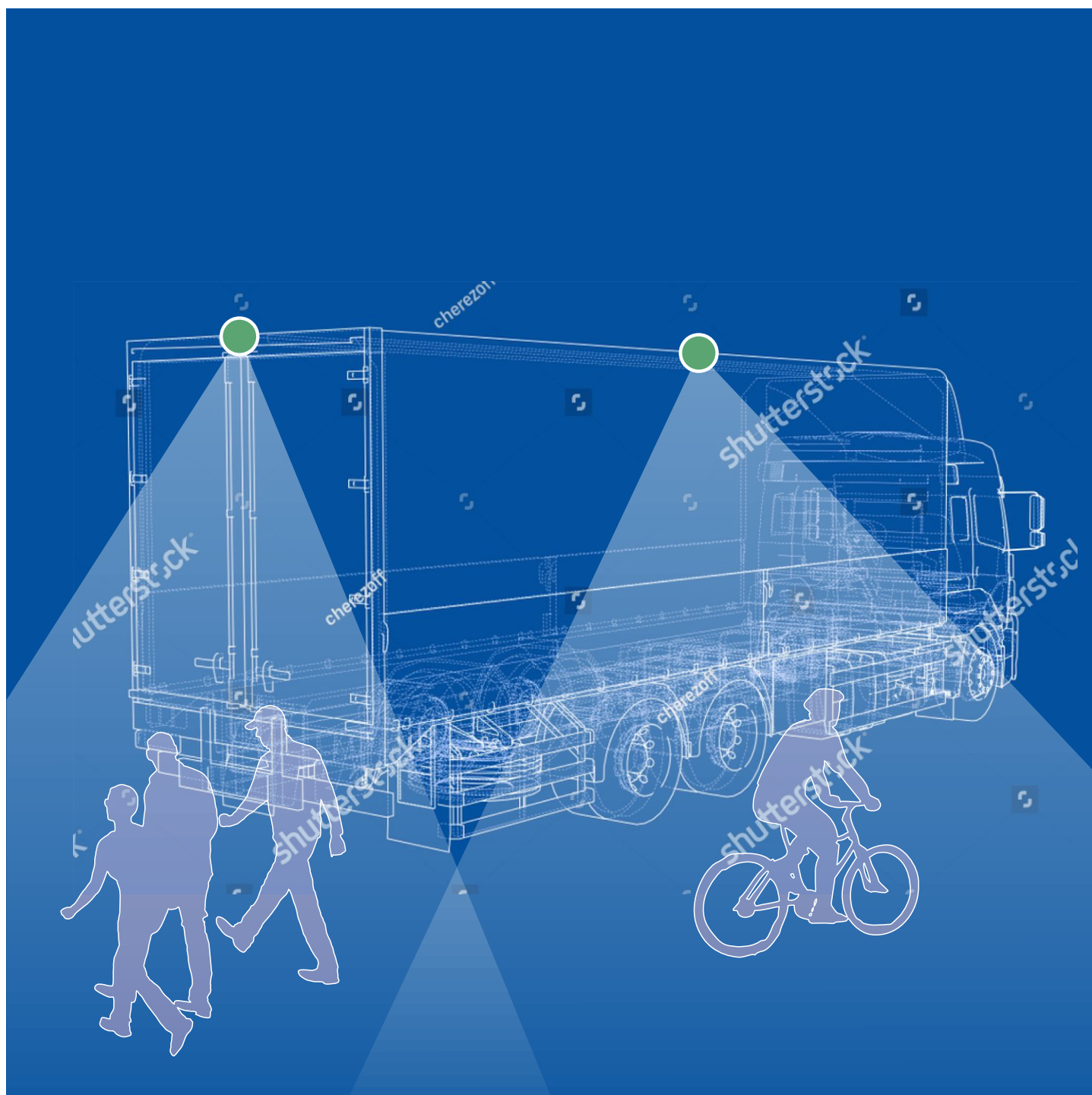


**Josefina Pan**  
Pacific Limited

**2021 Catalog**

# **AI Smart Driving Aid**

**AI Pedestrian Detection System / AI Camera / AI Box**



# 01 AI Pedestrian Detection System

Base on the smart algorithm, our new camera like equipped the brain, capable to real-time image judgement and warning.

Different from traditional cameras, AI cameras can not only distinguish specific objects, but also can warn in potential risks of collision area.

When obstacle appears in the blind spot, the system reminds the driver with audible and visual alarm. Allow vulnerable road users to have a good use environment.

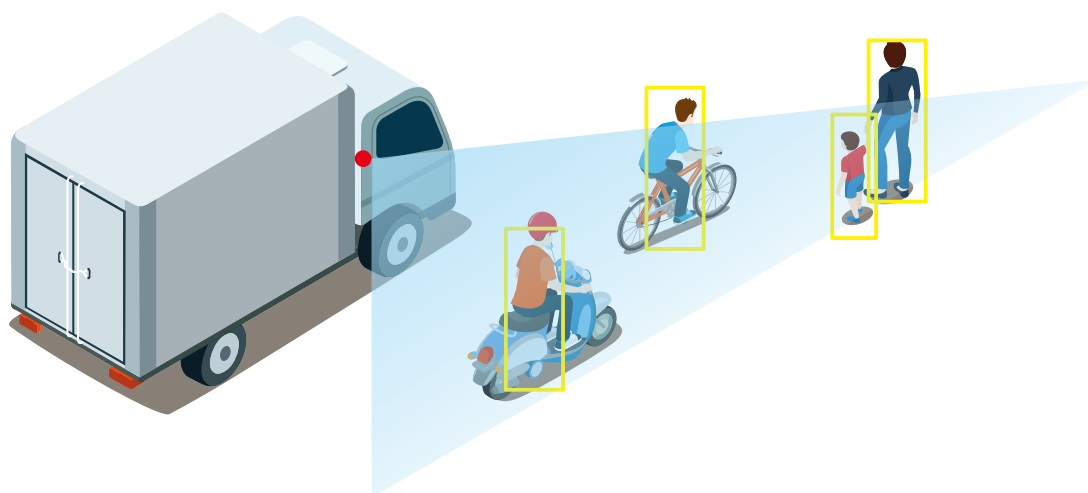
MODEL  
CADB682



- Support 3 channels AHD video input
- Max support 2 channels 1080P and 1channel 720P
- With ADAS、DMS、BSD、LCA、RCW、PCV etc functions
- Support recording function
- Support vehicle speed, steering, opening and closing and so on detecting
- Support 1 channel high-definition video output
- Bulit in Wi-Fi AP mode

## Camera Specification

Image Sensor	IMX307
Resolution	1080P
View Angle	54° (H)
Power Voltage	DC12V
Waterproof Rating	IP69K
Bulit in	HDR Function



When vehicle is moving , it will automatically detect pedestrians and work frame them.

## Object Detection Warning

### • ROD - Rear Obstacle Detection

**ex:** pallet, wall, rack, bushes

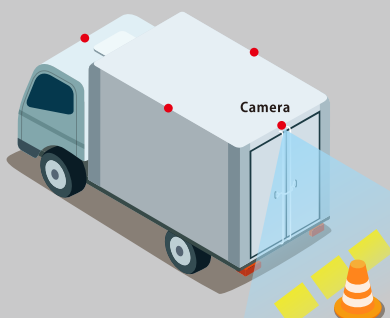
### • MOD - Moving Object Detection

### • RCTA- Rear Cross Traffic Alert

**ex:** pedestrian, bicyclist, motorcycle

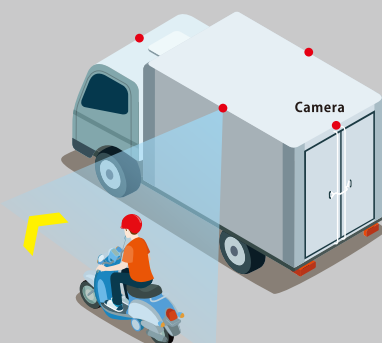
#### ROD

To detect obstacle and moving objects when reversing.



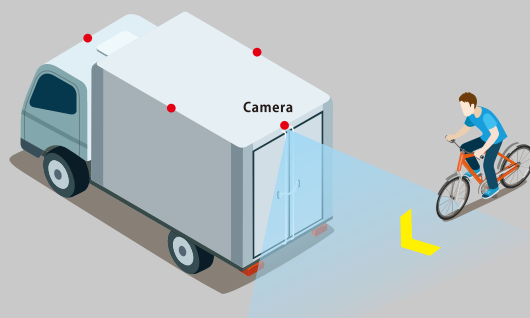
#### MOD

Approaching lateral moving object when driving.



#### RCTA

To detect rear moving object approaching from the blind spots.



## ► AI Camera

### All in one Intelligent Camera

- Resolution : 1280 x 960 (1.2M Pixel)
- Field of View : 165° (H)
- Detection Range : 180° (H)
- Operating Voltage : DC 8V-24V
- IP Rating : IP68

☒ ROD

☒ MOD

☒ RCTA



## ► AI Box

Simply upgrades your camera to an AI camera for more safe driving

- Resolution : Support CVBS 480P / AHD 720P
- Operating Voltage : DC 9V-36V
- Screen zoom in & out function (manually selection)
- Suitable for universal rear view system in the market
- Directly upgrade and reinforce your existed rear view system
- Supporting audio output , super easy installation (plug and play)

☒ ROD

☒ MOD

☒ RCTA

