

AVTECH



Innovation for Video

Standalone IP Video Surveillance Total Solution

2MP WDR IP Camera

	AVM521C	AVM542J	AVM552J	AVM543	AVM553J
					
Image Sensor	1/2.8" SONY CMOS				
Lens Type	Fixed	Vari-Focal		Motorized Vari-Focal	
Lens	f3.8mm / F1.5	f2.8 – f12mm / F1.4 ~ F2.8			
Day & Night	YES	YES	YES	YES	YES
IR LED	1 unit (15m)	3 units (50m)	2 units (35m)	3 units (50m)	2 units (35m)
Min. Lux	0.1 Lux (IR off) 0 Lux (IR on)	0.1 Lux (IR off) 0 Lux (IR on)	0.1 Lux (IR off) 0 Lux (IR on)	0.1 Lux (IR off) 0 Lux (IR on)	0.1 Lux (IR off) 0 Lux (IR on)
Max. Resolution	1920x1080 (2MP / 30FPS)				
Compression Type	H.264 / MJPEG	H.264 / MJPEG	H.264 / MJPEG	H.264 / MJPEG	H.264 / MJPEG
Multi-Stream	4 Streams	4 Streams	4 Streams	4 Streams	4 Streams
Power in	PoE DC12V	PoE DC12V	PoE DC12V	PoE DC12V	PoE DC12V
Audio in / out	2 in (built-in, line-in) 1 out (line-out)	1 in (line-in) 1 out (line-out)	1 in (line-in) 1 out (line-out)	1 in (line-in) 1 out (line-out)	1 in (line-in) 1 out (line-out)
Alarm in / out	1 in / 1 out	1 in / 1 out	1 in / 1 out	1 in / 1 out	1 in / 1 out
MicroSD Card Slot	YES	YES	YES	YES	YES
IP Rating	-	IP66	IP66	IP66	IP66
Vandal Proof	-	IK10	-	IK10	-
Temperature	0° ~ 40°C	-25° ~ 50°C / -40° ~ 50°C (H*)		-25° ~ 50°C / -40° ~ 50°C (H*)	
WDR	YES (120dB)	YES (120dB)	YES (120dB)	YES (120dB)	YES (120dB)
Push Video	YES	YES	YES	YES	YES
EaZy Networking	YES	YES	YES	YES	YES
Optional Bracket / Junction Box	PAVM542-BKT(B)	PAVM542-BKT(B) AVM542CEIL-BKT AVM542-BBKT	AVA456-BBKT AVA456-BHKT AVM552C-HLKT	PAVM542-BKT(B) AVM542CEIL-BKT AVM542-BBKT	AVA456-WBKT AVA456-WHKT AVM552C-HBKT
Other	3-Axis	3-Axis Heater (Optional)*	Heater (Optional)*	Auto Focus 3-Axis Heater (Optional)*	Auto Focus Heater (Optional)*

eHome H.265 Wireless IP Camera

	YGN2003	YGN2003A
		
Wireless & Frequency	IEEE802.11b/g/n, 2.4GHz	
Wireless LAN Security	64/128-bit WEP / WPA-PSK / WPA2-PSK data encryption	
Image Sensor	1/2.9" SONY CMOS	
Lens Type	Fixed	
Lens	f3.6mm / F1.8	
IR LED	6 units (15m)	
Max. Resolution	1920x1080 (2MP / 30FPS)	
Compression Type	H.265 / H.264 / MJPEG	
Multi-Stream	4 Streams	
Power in	DC5V / 1.5A (Micro USB)	
Audio in / out	Speaker / Microphone built-in	
Alarm Mode	Motion Detection	
MicroSD Card Slot	YES	
Pan / Tilt	Pan: 0° ~ 350°; Tilt: 0° ~ 45°	
Preset Position	YES (6 preset points)	
Temperature	0° ~ 40°C	
Mobile APP	EagleEyes	
Push Video	YES	
EaZy Networking	YES	
Optional Bracket / Junction Box	-	
Other	Hotpoint	Hotpoint Magnetic Mount

2MP H.265 IP Camera

	DGM1304QSSE	DGM1306QS	DGM2103SV	DGM2203SVSE	DGM2403ASVWSE	DGM2403ASVSSE	DGM2603SVW	DGM2603SVS
								
Image Sensor	1/2.9" SONY CMOS		1/2.8" CMOS					
Lens Type	Motorized Vari-Focal			Fixed				
Lens	f2.8 ~ 8.0mm / F1.6 ~ F2.8 f2.8 ~ 12mm / F1.4 ~ F2.8		f3.6mm / F1.6 f2.8mm / F1.6		f4.0mm / F0.95			
Day & Night	YES	YES	YES	YES	-	-	-	-
IR LED	4 units (50m)		2 units (25m)		2 units (White LED / 30m)	-	2 units (White LED / 30m)	-
Min. Lux	0.1 Lux (IR off) 0 Lux (IR on)	0.1 Lux (IR off) 0 Lux (IR on)	0.001 Lux (IR on) 0 Lux (IR on)	0.001 Lux (IR on) 0 Lux (IR on)	0.0001 Lux (White LED off) 0 Lux (White LED on)	0.0001 Lux	0.0001 Lux (White LED off) 0 Lux (White LED on)	0.0001 Lux
Max. Resolution	1920x1080 (2MP / 30FPS)							
Compression Type	H.265 / H.264 / MJPEG	H.265 / H.264 / MJPEG	H.265 / H.264 / MJPEG	H.265 / H.264 / MJPEG	H.265 / H.264 / MJPEG	H.265 / H.264 / MJPEG	H.265 / H.264 / MJPEG	H.265 / H.264 / MJPEG
Multi-Stream	4 Streams	4 Streams	4 Streams	4 Streams	4 Streams	4 Streams	4 Streams	4 Streams
Power in	PoE DC12V	PoE DC12V	PoE DC12V	PoE DC12V	PoE DC12V	PoE DC12V	PoE DC12V	PoE DC12V
Audio in / out	-	-	-	-	-	-	-	-
Alarm in / out	-	-	-	-	-	-	-	-
MicroSD Card Slot	-	-	-	-	-	-	-	-
IP Rating	IP66	IP66	IP66	IP66	IP66	IP66	IP66	IP66
Vandal Proof	-	-	-	-	-	-	-	-
Temperature	-25° ~ 50°C	-25° ~ 50°C	-25° ~ 50°C	-25° ~ 50°C	-25° ~ 50°C	-25° ~ 50°C	-25° ~ 50°C	-25° ~ 50°C
WDR	DWDR	DWDR	DWDR	DWDR	DWDR	DWDR	DWDR	DWDR
Push Video	-	-	-	-	-	-	-	-
EaZy Networking	YES	YES	YES	YES	YES	YES	YES	YES
Optional Bracket / Junction Box	AVA456-WBKT AVA456-WHKT	AVA456-WBKT AVA456-WHKT AVM552C-HBKT	AVA456-WBKT AVA456-WHKT	AVA456-WBKT AVA456-WHKT	AVA456-WBKT AVA456-WHKT	AVA456-WBKT AVA456-WHKT	AVA456-WBKT AVA456-WHKT AVM552C-HBKT	AVA456-WBKT AVA456-WHKT AVM552C-HBKT
Other	Auto Focus Vertical View Mode	Auto Focus Vertical View Mode	Starlight Vertical View Mode	Starlight Vertical View Mode	Ultra Starlight Vertical View Mode	Ultra Starlight Vertical View Mode	Ultra Starlight Vertical View Mode	Ultra Starlight Vertical View Mode

5MP H.265 IP Camera

AVM5937	AVM5547	AVM5447	DGM5406ASE	DGM5606
				
2592x1944 (30 / 25IPS)	2592x1944 (25IPS)		2592x1944 (5MP / 15IPS , 3MP / 30IPS)	
1/2.9" SONY CMOS				
30X PTZ	Motorized Vari-Focal		Fixed	
f4.5 ~ f135mm / F1.6 ~ F4.4	f2.8 ~ 12mm / F1.4 ~ F2.8		f2.8 mm / F1.8	
YES	YES	YES	YES	YES
8 units (200m)	6 units (50m)	4 units (35m)	4 units (40m)	4 units (40m)
0.1 Lux (IR off) 0 Lux (IR on)	0.1 Lux (IR off) 0 Lux (IR on)	0.1 Lux (IR off) 0 Lux (IR on)	0.1 Lux (IR off) 0 Lux (IR on)	0.1 Lux (IR off) 0 Lux (IR on)
H.265 / H264 / MJPEG	H.265 / H264 / MJPEG	H.265 / H264 / MJPEG	H.265 / H264 / MJPEG	H.265 / H264 / MJPEG
4 Streams	4 Streams	4 Streams	4 Streams	4 Streams
PoE (802.3at) DC19V / AC24V	PoE DC 12V	PoE DC 12V	PoE DC 12V	PoE DC 12V
1 in (line-in) 1 out (line-out)	1 in (line-in) 1 out (line-out)	1 in (line-in) 1 out (line-out)	-	-
1 in / 1 out	1 in / 1 out	1 in / 1 out	-	-
YES	YES	YES	-	-
IP66	IP66	IP66	IP66	IP66
-	-	IK10	-	-
-25° ~ 50°C	-40° ~ 50°C	-40° ~ 50°C	-25° ~ 50°C	-25° ~ 50°C
YES	YES	YES	YES	YES
YES	YES	YES	-	-
YES	YES	YES	YES	YES
-	AVA456-BBKT AVA456-BHKT AVM552C-HLKT	PAVM542-BKT(B) AVM542CEIL-BKT AVM542-BBKT	AVA456-WHKT	AVA456-WBKT AVA456-WHKT AVM552C-HBKT
Auto Focus Joystick Control RS485	Auto Focus	Auto Focus	-	-

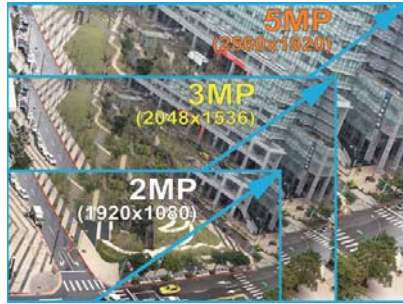
4 ~ 36CH H.265 NVR

	DGH1104	AVH1104	DGH1109	AVH1109	DGH2116	AVH2116	DGH8536L
							
Channel Number	4CH		9CH		16CH		36CH
Video Output	HDMI (4K2K) / VGA / Composite						
PoE Built-in	4CH		8CH				-
Audio out	NO	NO	YES	YES	YES	YES	-
HDD Storage*	SATA HDD x 1	SATA HDD x 1	SATA HDD x 1	SATA HDD x 1	SATA HDD x 2	SATA HDD x 2	SATA HDD x 8
eSATA	Expandable**	Expandable**	Expandable**	Expandable**	Expandable**	Expandable**	-
Max. Record Performance	3264 x 2448 @ 120 IPS	3264 x 2448 @ 120 IPS	3264 x 2448 @ 270 IPS	3264 x 2448 @ 270 IPS	3264 x 2448 @ 240 IPS	3264 x 2448 @ 240 IPS	3264 x 2448 @ 540 IPS 2592 x 1944 @ 1080 IPS
Throughput	80Mbps	80Mbps	120Mbps	160Mbps	80Mbps	80Mbps	300Mbps
Compability	AVTECH ONVIF 2.2	AVTECH ONVIF 2.2	AVTECH ONVIF 2.2	AVTECH ONVIF 2.2	AVTECH ONVIF 2.2	AVTECH ONVIF 2.2	AVTECH ONVIF 2.2
Recording Type	Manual Record Event Record Schedule Record	Manual Record Event Record Schedule Record	Manual Record Event Record Schedule Record	Manual Record Event Record Schedule Record	Manual Record Event Record Schedule Record	Manual Record Event Record Schedule Record	Manual Record Event Record Schedule Record
Power-in	DC 48V	DC 48V	DC 48V	DC 48V	DC 48V	DC 48V	DC 19V
Dimensions (mm)	260(L) x 48(H) x 235.7(D)	260(L) x 48(H) x 235.7(D)	260(L) x 48(H) x 235.7(D)	260(L) x 48(H) x 235.7(D)	345(L)x58.8(H)x223(D)	345(L)x58.8(H)x223(D)	358(L) x 152(W) x 267(D)
Temperature	10° ~ 40°C	10° ~ 40°C	10° ~ 40°C	10° ~ 40°C	10° ~ 40°C	10° ~ 40°C	10° ~ 40°C
Push Video	-	YES	-	YES	-	YES	-
EaZy Networking	YES	YES	YES	YES	YES	YES	YES
Optional Bracket	-	-	-	-	-	-	-
Other	Support CMS Push Status Alarm Scenario Setup Seamless Record Spot Monitor	Support CMS Push Status Alarm Scenario Setup Seamless Record Spot Monitor IVS	Support CMS Push Status Alarm Scenario Setup Seamless Record Spot Monitor	Support CMS Push Status Alarm Scenario Setup Seamless Record Spot Monitor IVS	Support CMS Push Status Alarm Scenario Setup Seamless Record Spot Monitor	Support CMS Push Status Alarm Scenario Setup Seamless Record Spot Monitor IVS	Support CMS Push Status Alarm Scenario Setup

* The capacity of one SATA HDD is up to 14TB. ** A SATA to eSATA cable is needed and this cable is optional.

H.265 Compression with 3MP / 5MP IP Solution

To get superb image resolution and quality, AVTECH 3MP / 5MP IP solution has all you can expect. It supports H.265, H.264 and MPEG4 compression formats and is able to deliver 30fps@3MP / 5MP resolution for live display and recording. Some models are also equipped with a eSATA interface for external disk array connection and possibly building a RAID5 system to keep your data safe. can connect the cameras to AVTECH 3MP / 5MP NVR.



Cloud EaZy Networking

Plug & Play

EaZy Networking is developed for AVTECH products (NVR / DVR / IP cameras) to simplify network configurations by just a few steps.



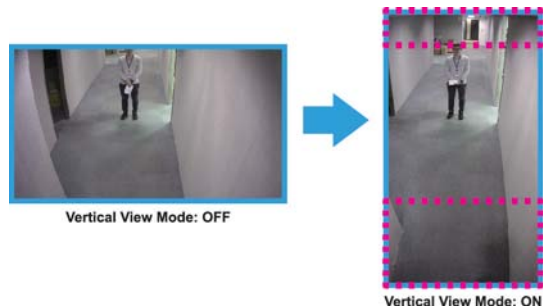
Buddy

You can easily share your EaZy Networking account and classify your Buddy to many levels to access your cloud device separately.



Vertical View Mode (Corridor Mode)

This is used when the area you want to monitor is more vertical than horizontal in shape to truly focus on the area you need to pay attention, such as hallways, staircases and aisles.

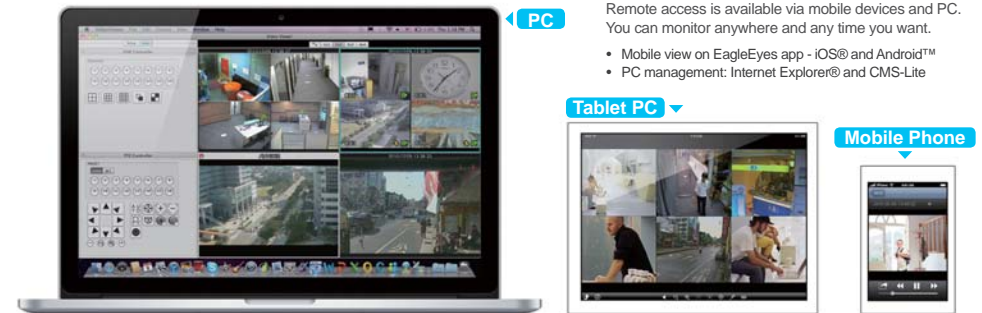


Push Video - Real-time Event Notification

Every time PUSH VIDEO solution detects an event, our NVR will immediately send an event notification to your mobile device within five seconds, and meanwhile, EagleEyes, the mobile surveillance app will be activated automatically for remote video playback.



Multi-Platform Support



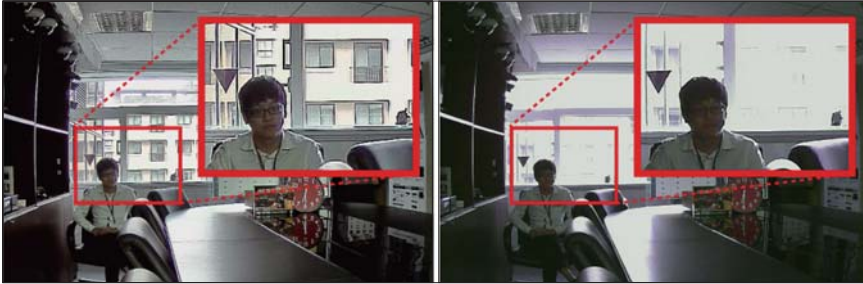
Easy PTZ Control with CMS

To remotely control AVTECH IP speed dome camera, you can connect a USB joystick to the PC with our CMS program (Lite / Standard / Pro) installed to move the camera. No NVR is needed to send the control commands. In addition to CMS, you can also make PTZ control via our mobile app, EagleEyes.



■ WDR (Wide Dynamic Range)

With WDR, the AVTECH IP solution is especially suitable for overexposure and dark areas to increase image recognizability. It's always easy to tell who and what's there.



With WDR

Without WDR

■ Multiple Channels Recording up to 144CH

Users could combine the displays of up to 4 HDMI recorders into one monitor and control all four devices with one mouse via our HDMI matrix, HDM2, providing the most economic way to have a up to 144CH surveillance solution as an alternative to use a PC-based CMS software.

144CH TV WALL



36CH Recorder



AVH8536
- 10TB * 8 HDDs

HDMI Output

Accessories

	HDM02	AVX912R6	AVX913R6	AVX102	AVX992	AVX997
Product	HDMI Matrix	PoC converter (PoC x 6, Giga port x 2)	PoN converter (PoN x 6, Giga port x 2)	Joystick	10-bay Disk Array (eSATA)	10-bay Disk Array with RAID5 mechanism (eSATA)
Power in	DC 12V	DC 48V	DC 48V	USB Plug&Play	DC 19V	DC 19V
Description	Users could combine the displays of up to 4 HDMI devices (including NVR and DVR) into one monitor and control all four devices with one mouse, providing the most economic way to have a up to 144CH surveillance solution as an alternative to use a PC-based CMS software.	This PoC (power-over-coaxial) converter supports power/data to max. 6 PoC IP cameras through coaxial cables, and the distance between each camera to this device can be up to 200 meters with power supplied or 300 meters without power supplied.	This PoN (power-over-network) converter supports 48V DC power supply to IP cameras through network cables, and the distance between an IP camera and this device could reach up to 100 meters.	This joystick is used with AVTECH CMS to make basic control of PTZ cameras.	This 10-bay disk array is designed for DVR and NVR to save video data.	This 10-bay disk array is designed for DVR and NVR to save video data. It also supports RAID5 system building to secure data safety.

	PAVM542-BKT(B)	AVM542CEIL-BKT	PP-AVC787-00K	AVH516PLUS-RBKT	AVM542-BBKT	AVA456-WBKT	AVM552C-HBKT	AVA456-WHKT
Product	Wall Mount for Dome Camera	In-ceiling Mount for Dome Camera	19" Rack Mount Bracket	19" Rack Mount Bracket	Junction Box	Junction Box (Waterproof)	Junction Box	Junction Box (Waterproof)
Description	This mount bracket is used to mount the specified dome cameras such as AVM521 on the wall.	This mount bracket is used to mount the specified dome cameras such as AVM543 into the ceiling tile with only the glass dome revealing.	This bracket is used to attach specified 16CH recorders such as AVH517 to a 19" rack.	This bracket is used to attach AVH516+, AVH364 and AVH336 to a 19" rack.	Size: 50(Ø) x 40(H) mm This junction box is designed to be used with specified dome cameras.	Size: 101.1(Ø) x 51.7(H) mm This junction box is designed to be used with specified cameras. AVA456-BBKT in dark grey is also available.	Size: 118.3(Ø) x 41(H) mm This junction box is designed to be used with specified cameras. AVM552C-HLKT in dark grey is also available.	Size: 120.2(Ø) x 51(H) mm This junction box is designed to be used with specified cameras. AVA456-BHKT in dark grey is also available.



Client-server Mode

Client-server mode available to manage larger system with multiple computers. (CMS Pro only)

Multiple monitor display

Supports 4 ~ 8 monitor display and able to define purposes of each monitor. (CMS Pro & Plus only)

Unlimited Camera Management No

Supports unlimited-camera management. (All CMS versions)

32CH ~ 96CH Live Monitor

Supports 32CH ~ 96CH live display for flexible usage.

e-Map Live Monitor & Event Notifications

Supports maps with camera location on it for intuitive management.

Event Pop-up Monitor

When an event occurs, the event monitor pops up the channel immediately with live display. Up to 4CH ~ 25CH event pop-ups are supported. To see event playback with pre-alarm recording, click on the pop-up again. (CMS Pro & Plus only)

Health Check Monitor

Shows the status of your PC, such as CPU usage, RAM usage, network upload/download speed, in the control panel for loading check. (CMS Pro & Plus only)

Trigger Rule

Assigns a target device to take actions (Go to a predefined preset point / Send Push Video / Send alarm-out signal) when the source device has an event occurrence. (CMS Pro & Plus only)

Video Playback

Up to 16CH video playback to check what happened. (All CMS versions)

EZUM Camera Control (Optional)

Supports AVTECH unique EZUM camera series for quick camera configurations.

	Lite	Plus	Pro
Video CH & device management ability	Unlimited		
Client-server Mode	NA	Client mode only	Yes
Multiple monitor display output	Single	4	8
Live View & Control			
Total Live Display CH Number	32	64	96
Video Record			
Total Record CH Number	16 (up to 5MP)	24 (up to 5MP)	32 (up to 5MP)
E-Map			
E-Map	Yes (Simple)		Yes
Event Notification	NA	Yes	
Event Management			
Event Pop-up	NA	1CH	4CH
Health Check			
Push Status	E-Mail		
Push Video	Yes (By AVTECH NVR / DVR)		
Health Monitoring	NA	Yes	
Plug-in module support			
LPR Plug-in	NA		Yes
POS Plug-in	NA		Yes
Thermal Video Plug-in	NA		Yes
IVA Lossing Object Plug-in	NA		Yes
IVA Left Object Plug-in	NA		Yes
IVA Virtual Fence Plug-in	NA		Yes
IVA Face Detection Plug-in	NA		Yes
Others			
Trigger Rule	NA	Yes	
DPTZ	Yes (1X ~ 11X)		
Joystick	Yes		
EZUM Camera Control	Optional		

AVTECH CORPORATION

Website: www.avtech.com.tw

TEL: + 886 2 2655 3866 FAX: + 886 2 2655 3855

10 F, E Building, No. 19-11, San Chung Rd., Nankang, Taipei, 115, Taiwan, R.O.C.



YouTube www.avtech.com.tw/seo/video

Facebook www.avtech.com.tw/seo/facebook

E-mail marketing@avtech.com.tw