



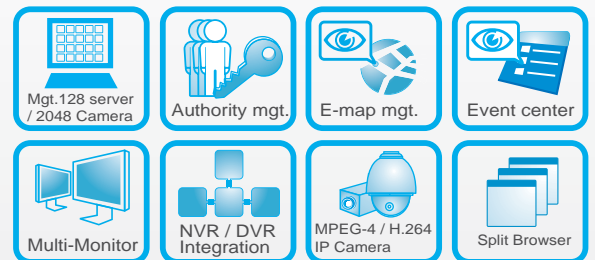
Central Management System Software

CMS 3000 server is a Hybrid CMS solution which will allow multi-users from anywhere to login and manage multi-devices at the same time. CMS 3000 can not only manage KGuard NVR but also KGuard Standalone DVR.

CMS 3000 client dongle may allow users to view CMS 3000 server through IE browser at anytime anywhere with full security protection. CMS 3000 server may support unlimited client dongle extension. (On windows 2003 server).

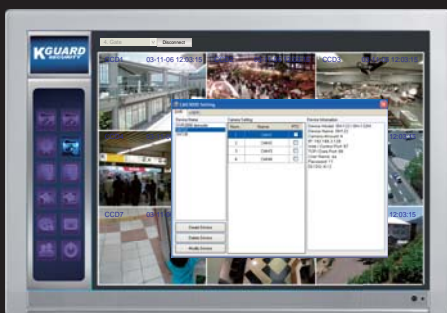
Highlighted Features:

- Use your existing computer.
- Multiple monitors supported per workstation. (Client & Server)
- Manage up to 128 Servers or 2048 camera for each system (by dongle authority).
- Support 128 channels live cameras simultaneously.
- Use IE for web client access.



Local Server

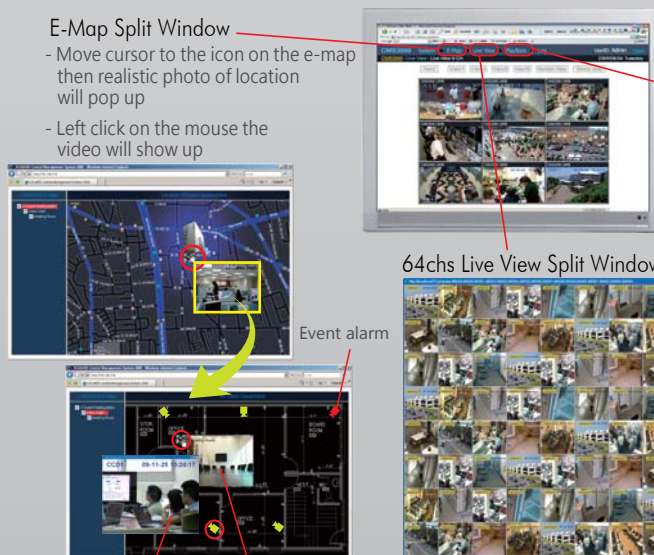
Manage KGuard NVR, DVR and Mobile DVR to become a hybrid solution



POWERFUL PLATFORM FOR CLIENT USERS

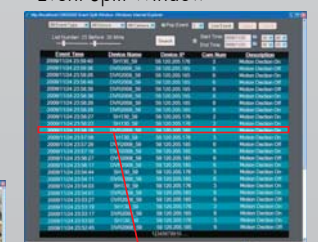
Support split window on multi-monitors display.

- E-Map Split Window**
- Move cursor to the icon on the e-map then realistic photo of location will pop up
 - Left click on the mouse the video will show up



Client

Event Split Window



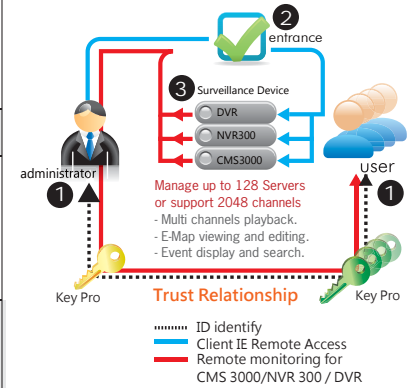
Live View (left double click) Playback (Right double click)

Our Surveillance Solution!

Function Specification

	Server	Client
User Friendly	<ul style="list-style-type: none"> User friendly interface with easily understanding UI and icon designs. Support multi monitors/screens display. Drag the monitoring page to any location on the screen easily. 	<ul style="list-style-type: none"> Support IE browser remote log in and user friendly interface. Support multi monitors/screens display. Drag the monitoring page to any location on the screen easily.
Device Management	<ul style="list-style-type: none"> Can be used to manage KGuard NVR, standalone DVR, PC based DVR and mobile DVR 	—
Authority / User management	<ul style="list-style-type: none"> Local site login protection with password and server keypro/dongle. Support unlimited account and password set up. Camera log in viewing availability is managed by Administrator. Support monitoring group set up. 	<ul style="list-style-type: none"> Remote log in protection with password and client keypro/dongle Change the account or password of client keypro/dongle from local server
Live View	<ul style="list-style-type: none"> Support live view from local site or remote site. Manage up to 128 servers or up to 2048 channels. Support viewing 128 (64x2) channels by AP. Support PTZ control. Live recording and snap shot. 	<ul style="list-style-type: none"> Support unlimited remote clients log in. Client server can log in to view the channels that are authorized by local server. Support 1x1, 2x2, 3x3, 4x4 or full screen view modes. Support live view and remote PTZ control by IE browser. Operate the pause, stop, play, forward, or rewind when live display or play back. Support remote back up for the single viewing channel.
Event View	<ul style="list-style-type: none"> Record information like motion detection, signal lose or recover, alarm status etc. Different search modes set up like searching events from server name, channel number etc. Support live view or play back and back up to local server. 	<ul style="list-style-type: none"> Different search modes set up like searching events from server name, channel number etc. Camera pop up when events occur. Support remote back up the event list.
Playback View	<ul style="list-style-type: none"> Multi channels play back or Multi windows views play back. 	<ul style="list-style-type: none"> Multi channels play back or Multi windows views play back.
E-map View	<ul style="list-style-type: none"> Support live view from E-map. Support play back from E-map. 	<ul style="list-style-type: none"> Support location photo display while cursor moves on the site point. Support live view from E-map. Support play back from E-map. Signal when event alarm triggered.

Authority Mgt. Security



Server View



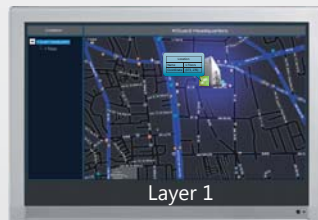
Client View



Playback View



Event View

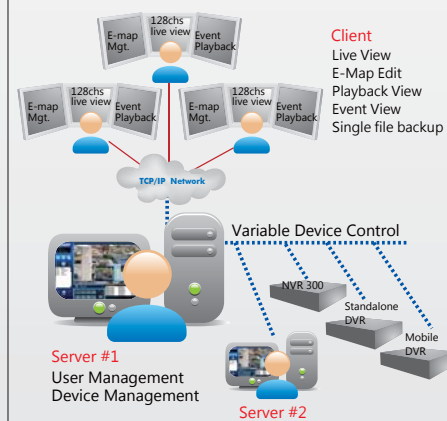


Layer 1



E-Map View

CMS Software Configuration



System requirements

CMS 3000 can be installed in any desktop or portable computers as long as they comply with following requirements

CPU	Intel® Core™2 Duo Processor E2200 equivalent or above.
Memory	1 GB or above
Graphic card	ATI Radeon 9200 / Nvidia Geforce 6200 equivalent or above
Mother board	Intel G31 / G45 chipset or above, (Recommend Intel Chipset for superior performance)
Ethernet	100baseT or above, (Recommend LAN/1000baseT network)
Hard Disk	100 GB or above
OS	Window XP SP3 Professional (10 user) / Server2003 (Unlimited remote connection)