



Your Security Digitalized

SHARK



SHS-2320



Enhanced Lock
Double Claw Bolt



Intrusion Prevention
Infrared Ray Sensor

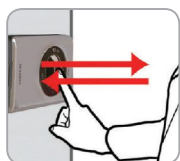
Enhanced Security

Enhanced Lock/Double Claw Bolt

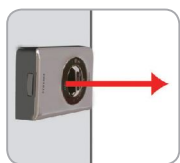
The addition of double claw bolts is a further measure to prevent forced intrusion, ensuring your safety.



Intrusion Prevention/Infrared Ray Sensor



The door can not be opened even if the Open/Close button is pressed inside unless the sensor detects inside movement.



[When break-in happens]
When the door is unlocked from the inside without sensing any movement inside, the door will not open.

Double Authorization Mode/Both Smart Card&Password

With double authorization mode set up, both password and card must be authenticated to open the door, strengthening security.



One Button - One Touch / Anti-theft Setup

When leaving, the user can set up the anti-theft function by simply pressing the button, preventing any tampering by creating a warning sound.



Fingerprint Marks are No Longer a Concern

Passwords will be pressed after press two multi-leveled security codes, preventing intruders from checking the fingerprint marks left.



2 multi-leveled security codes appear before entering password



Press the password



Impossible to guess password due to random fingerprint mark

Convenient Accessibility

User Access Code



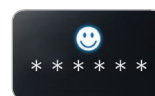
RFID Card or Key Tag



User-friendly Interface

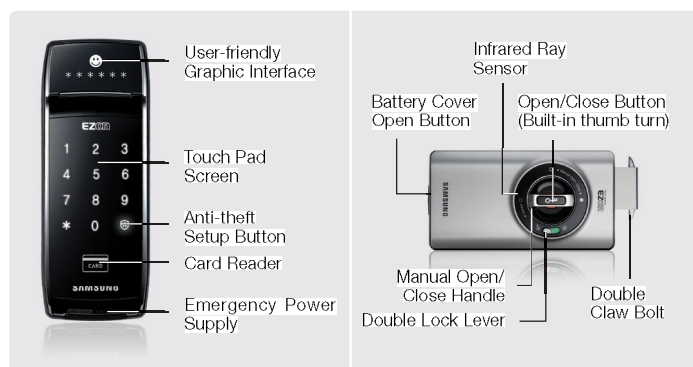
User-friendly Graphic Interface

Using and managing the doorlock system is easier than ever before with simple icons indicating the relevant status.



- Low Battery Indicator
- Authorization/Setup Failure
- Intrusion/Fire/Security Breach Incident
- Double Lock Mode
- Authorization/Setup Success
- Word Count of Password Entered

Body Part Names



Specifications

| | | |
|--------------|---------------------------|--|
| Product | RF Card | Module Type:RFID (ISO 14443A/13.56MHz RF chip/2 pieces) Capacity:Maximum 20 |
| | User Access Code | Combination:4~12 Digit Number Combination |
| | Material | Outer body:Aluminum, Acrylate and Nitrile Butadiene Rubber Inner body:Aluminum, Polycarbonate, Acrylate and Stainless Steel |
| | Power | DC 6V (4 AA Alkaline Batteries) |
| Installation | Size | Outer body:65.2x170.5x22.5mm(WxHxD) Inner body:182x90x86mm(WxHxD) |
| | Backset Size | 207x260x86mm(WxHxD) |
| | Hole Size | 32mm |
| | Lock Set | Claw Type Deadbolt |
| | Compatible Door Thickness | 38mm~52mm |