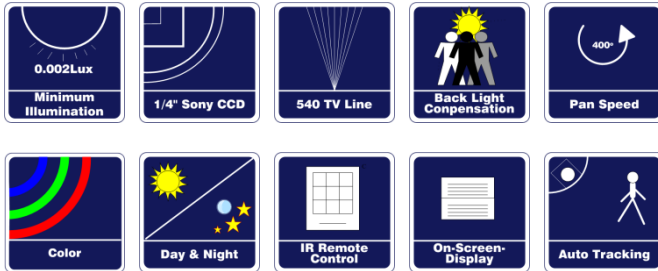


EL-SD800 G2

Advanced Full Function High Speed Dome Camera

Build-in Multi-Language OSD, and selectable

Camera Modules



- Multi-language OSD supported
- RS-485 for system control
- 1/4" Sony ExView HAD CCD sensor (EL-SD860, EL-SD890)
- Privacy zone for masking function
- On-Screen compass, temperature, pan tilt degrees, and zoom display
- 300 degree/sec pan and tilt speed
- Programmable locations labels and on-screen-displays
- Patterns, Cruise, user-defined programmable pattern, include pan, tilt, zoom
- 8 groups, up to 16 preset points for each group with programmable name, and dwelling time (0~255s)
- Up to 256 preset points with preset point freeze function*
- 8 groups of programmable patterns with combination cruise, presets and group
- Build-in auto calibration for the system accuracy
- Proportional pan and tilt makes speed dome continuously decreases pan and tilt speeds in proportion to depth of zoom.
- Build-in video and control signal surge protection, up to 15KV thunder protection
- Build-in up to 9 groups of protocol to increase the system compatibility
- Auto flip rotates dome 180 degrees at bottom of tilt travel
- IP 66 weather proof standard for both indoor and outdoor application in hostile environment

* Only work with camera module support this function (the speed dome only display the image of the preset).

Specifications

GENERAL FEATURES

Environment	Indoor / outdoor
Controlling	RS-485
Operating Temperature	-25 ^o ~ 70 ^o
Power Source	18V ~24V AC
Power Consumption	14.04W
Dimensions	Ø221x320mm
Weight	1.5kg(w/o bracket)
Humidity	< 90% RH
Materials	Die Casting Aluminum

CONTROL FEATURES

	830	860	880	890	670	690
Protocol	Elitar, Pelco P, Pelco D, Panasonic, Sensormetic, ect.					
Preset	256					
Preset Accuracy	0.01°					
Swing (Horizontal)	8					
Sequence	8 Groups					
Pattern	4 (Up to 3 hours programming)					
Tour	8 Groups (Combination of Sequence, Swing and Pattern)					
Display	Preset Name, Compass,					
Privacy Masking	8 Programmable Privacy Masking Area					
Zoom Title	●	●	●	●	●	●
Home Position	●	●	●	●	●	●
Auto Restoring	●	●	●	●	●	●
Auto Flip (On/Off)	●	●	●	●	●	●
Baud Rate	2400, 4800, 9600 bps					

ROTARY BODY FEATURES

Pan Travel	360 °continuous
Tilt Travel	-5 ° ~ 95 °
Manual Speed	0.2 ° ~260 °
Preset Speed	300 °/sec
Pan Speed	0.2 ° ~ 300 °/sec
Tilt Speed	1 ° ~ 90 °/sec

CAMERA FEATURES

EL-SD670 (27X Day and Night)

Image Sensor	¼"Super HAD CCD
Effective Pixel	752X582 (PAL) 768X494(NTSC)
Lens	27X Zoom (3.5~94.5mm) F1.6 ~F2.9
Focus	Auto / Manual / One-push
Iris	Auto / Manual
Viewing Angle(H)	55.5° (wide end) to 2.24°(wide end)
Video Output	1.0Vp-p, 75Ohm
Gain Control	Low/ Medium/ High / Manual / Off
Minimum Illumination	Color: 0.4Lux & B/W: 0.02 Lux@F1.6 50IRE
Synchronization	Internal
Digital Zoom	12x(324x with Optical Zoom) (ON/ OFF)
Horizontal Resolution	Color: 550TVL ; B/W: 680TVL
SSNR	Low / Medium / High / Manual / Off
White Balance	ATW /AWC / Manual/ Indoor / Outdoor

EL-SD690 (39X Day and Night)

Image Sensor	¼"SONY EXVIEW HAD Double Sca CCD			
Effective Pixel	752X582 (PAL) 768X494(NTSC)			
Lens	39X Zoom (3.4~132.6mm) F1.6 ~F3.7			
Focus	Automatic with manual override			
Iris	Automatic with manual override			
Viewing Angle(H)	57.54° (wide end) to 1.56°(wide end)			
Video Output	1.0Vp-p, 75Ohm			
Gain Control	On / Off			
Auto Level Control	Auto(DC) / Manual (Level Control)			
Minimum Illumination	Color: 0.4Lux & B/W: 0.02 Lux@F1.6 50IRE			
Privace Zone	8 Area			
Synchronization	Internal / External (V-Lock)			
Wide Dynamic Range	On/ Off (X128 NTSC, x160 PAL)			
DNR	On / Off (Adaptive 2D+3D)			
Digital Zoom	X1 ~12x (468xwith optical zoom)			
Horizontal Resolution	Color: 560TVL ; B/W: 600TVL			
SNR	> 52dB			
White Balance	2000K to 10,000K			
Sensitivity (Typical)	50 IRE	25 IRE	15 IRE	
Day	SenseUp Off	1.2Lux	0.6 Lux	0.36Lux
Mode	SenseUpx256	0.004Lux	0.002Lux	0.001Lux
Night	SenseUp Off	0.12Lux	0.06Lux	0.036Lux
Mode	SenseUp x256	0.0004Lux	0.0002Lux	0.0001Lux

CAMERA FEATURES

EL-SD830 (18X)

Image Sensor	¼"SONY EXVIEW HAD CCD
Effective Pixel	752X582 (PAL) 768X494(NTSC)
Lens	18X Zoom (4.1~73.8mm) F1.4 ~F3.0
Focus	Automatic with manual override
Iris	Automatic with manual override
Viewing Angle(H)	48.0° (wide end) to 2.8°(wide end)
Video Output	1.0Vp-p, 75Ohm
Gain Control	Auto / Manual (-3 to 28dB, 2dB step)
Minimum Illumination	0.7Lux(Typical) (F1.4, 50IRE)
Synchronization	Internal / External (V-Lock)
Digital Zoom	12x (216x)with optical zoom)
Horizontal Resolution	470TVL
SNR	>50dB
White Balance	2000K to 10,000K

EL-SD860 (18X Day and Night)

Image Sensor	¼"SONY EXVIEW HAD CCD
Effective Pixel	752X582 (PAL) 768X494(NTSC)
Lens	18X Zoom (4.1~73.8mm) F1.4 ~F3.0
Focus	Automatic with manual override
Iris	Automatic with manual override
Viewing Angle(H)	48.0° (wide end) to 2.8°(wide end)
Video Output	1.0Vp-p, 75Ohm
Gain Control	Auto / Manual (-3 to 28dB, 2dB step)
Minimum Illumination	0.7Lux(Typical) (F1.4, 50IRE)
Synchronization	Internal / External (V-Lock)
Digital Zoom	12x (216x)with optical zoom)
Horizontal Resolution	470TVL
SNR	>50dB
White Balance	2000K to 10,000K
Sensitivity (Typical)	30 IRE 50 IRE
Day	SenseUp Off 0.04Lux 0.7Lux
Mode	SenseUp On 0.004Lux 0.0082Lux
Night	SenseUp Off 0.05Lux 0.17Lux
Mode	SenseUp On 0.0007Lux 0.0013Lux

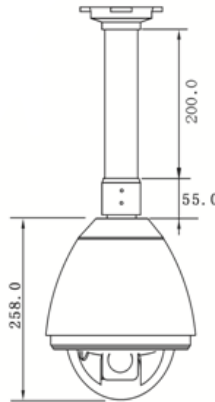
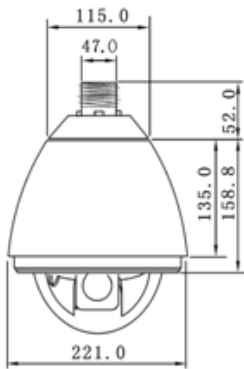
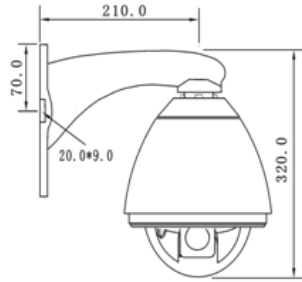
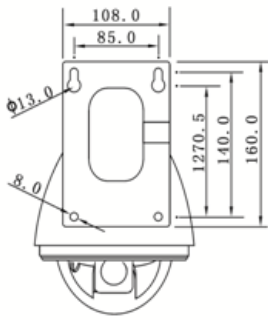
EL-SD880 (26X Day and Night)

Image Sensor	¼"SONY EXVIEW HAD CCD
Effective Pixel	752X582 (PAL) 768X494(NTSC)
Lens	26X Zoom (3.5~91.0mm) F1.6 ~F3.8
Focus	Automatic with manual override
Iris	Automatic with manual override
Viewing Angle(H)	54.2° (wide end) to 7.7°(wide end)
Video Output	1.0Vp-p, 75Ohm
Gain Control	Auto / Manual (-3 to 28dB, 2dB step)
Minimum Illumination	2.0Lux(Typical) (F1.4, 50IRE)
Synchronization	Internal / External (V-Lock)
Digital Zoom	12x (312x)with optical zoom)
Horizontal Resolution	470TVL
SNR	>50dB
White Balance	2000K to 10,000K
Sensitivity (Typical)	30 IRE 50 IRE
Day	SenseUp Off 0.5Lux 1.0Lux
Mode	SenseUp On 0.0052Lux 0.013Lux
Night	SenseUp Off 0.10Lux 0.26Lux
Mode	SenseUp On 0.0013Lux 0.0026Lux

EL-SD890 (36X Day and Night)

Image Sensor	¼"SONY EXVIEW HAD CCD
Effective Pixel	752X582 (PAL) 768X494(NTSC)
Lens	36X Zoom (3.4~122.4mm) F1.6 ~F4.5
Focus	Automatic with manual override
Iris	Automatic with manual override
Viewing Angle(H)	57.8° (wide end) to 1.7°(wide end)
Video Output	1.0Vp-p, 75Ohm
Gain Control	Auto / Manual (-3 to 28dB, 2dB step)
Minimum Illumination	1.4Lux(Typical) (F1.6, 50IRE)
Synchronization	Internal / External (V-Lock)
Digital Zoom	12x (432x)with optical zoom)
Horizontal Resolution	470TVL
SNR	>50dB
White Balance	2000K to 10,000K
Sensitivity (Typical)	30 IRE 50 IRE
Day	SenseUp Off 0.7Lux 1.4Lux
Mode	SenseUp On 0.07Lux 0.018Lux
Night	SenseUp Off 0.17Lux 0.1Lux
Mode	SenseUp On 0.0024Lux 0.0039Lux

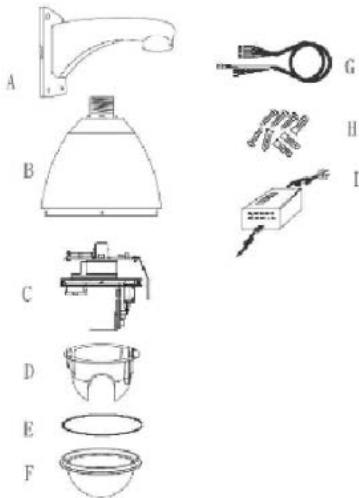
DIMENSION



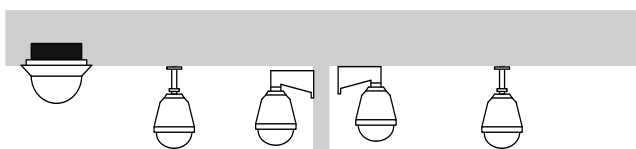
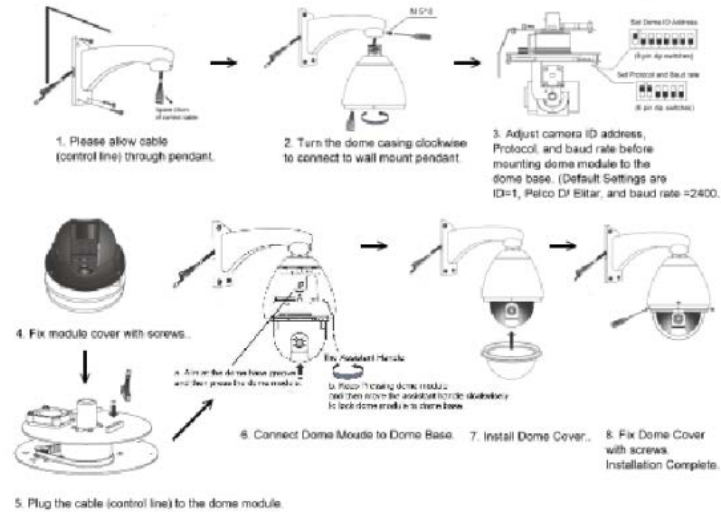
INSTALLATION

Speed Dome Assembly and Cabling

A. Assembly Components



B. Process of Installation



Indoor Application

Outdoor Application

EL-PT800 Control Key Board



- Multi-function control key board: PTZ dome camera, matrix
- Support 2400, 4800 and 9600 baud rate
- 20 x 4 back light functions LCD to support use friendly interface
- Joystick control speed dome direction and speed
- Password protection
- Preset point edit function
- RS-232 port to download update software

EL-PT803 Control Key Board



- 3D Axis Speed Dome Control Key Board
- Joystick control speed dome direction, speed and zoom function
- Support 2400, 4800 and 9600 baud rate
- 20 x 4 back light functions LCD to support use friendly interface
- Password protection
- Preset point edit function
- RS-232 port to download update software

EL-SD-102 Surge Protection Box



- Separate Surge Protection Box for Speed Dome Camera
- Build-in 800VA Surge Protection on Power Input
- Auto recovery after power surge
- Build-in 15KV Surge Protection on RS-485
- AC 24V Power Input

EL-AT-201 Speed Dome Auto Tracking Box



- Highly compatible with normal high speed PTZ cameras, with no affect on the existing functions of the cameras.
- Cost effective solution with no other update cost on the cameras;
- Independent OSD menu;
- Up to 4 alarm inputs;
- Compact design and easy operation;
- Auto search and track on moving object, with adjustable precision and tracking state;
- Auto return to home position/preset and keep tracking after some programmable interval when object is out of adjustable area;
- P/T speed adjustable as per zoom times;
- Manual-controlled scan area adjustable.

Model Selection

EL-SDX100-X₂ X₃

670: 27X Samsung Day/Night Zoom Module X: Indoor Application N: NTSC
 690: 39X Samsung Day/Night Zoom Module 2: Outdoor Application P: PAL
 830: 18X Sony Normal Zoom Module
 860: 18X Sony Day/Night Zoom Module
 880: 26X Sony Day/Night Zoom Module
 890: 36X Sony Day/Night Zoom Module