

## Full Touch Screen with built in Dual Inner-Skin Sensor - *World's First*

4.3" Full touch screen LCD and IP 65 – based waterproof combining  
an Dual Inner-Skin Sensor makes the verification rate 100%.

TSG 750 is a good solution where the perfect security is needed.



# TSG-750

Inner-skin Verification  
Fake Fingerprint Detection  
Waterproof (IP-65)  
Power of Ethernet (PoE)  
Face Detection Technology



**The Perfect Security  
& Balance**



# TSG-750

Full Touch Screen with built in Dual Inner-Skin Sensor

## Product Features



### Easy Installation and user management

- Verify after captures user's face using face recognition algorithm
- Easy installation using POE (Power of Ethernet) and WIFI
- IP 65 – Waterproof function
- Product extension connecting external reader
- A rigid metal frame for the product durability



### Accurate Fingerprint Recognition by Dual Inner-Skin Sensor Algorithm

- Built in Dual Inner-Skin Sensor algorithm – World's First
- Verification rate 100% for scratched, wet, and damaged fingerprint using Dual Inner-Skin Sensor
- Fake fingerprint detection technology
- A variety of options of fingerprint sensor  
: Optical Sensor + AES1711 Sensor or LE Sensor + AES1711 Sensor



### High Definition Color Display

- 4.3 Inch touch screen LCD with easy to use GUI
- Check the status of the communication on the screen
- Check the LOCK status on the screen
- Current Time/Operation Mode/Function Button



### Various Access Control Function

- Various time zone setup
- Limited access setup
- Max 256 time zone setup
- Anti-pass back function
- Grouping and sending/receiving users by group through TSG-750



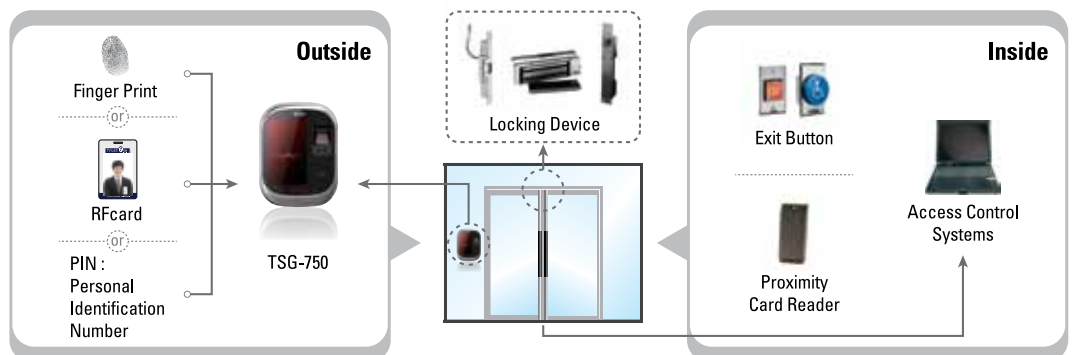
### Micro SD Memory Card

- Upload and save user's fingerprint/card/password
- Save access events
- Firmware update

## Product Specifications

CPU	32bit ARM
Memory	64M Flash, 64M RAM
Display	4.3 TFT Color LCD
Optical Sensor	500dpi
Semiconductor Sensor (option)	AES 1711 (Inner-skin verification)
LE optical Sensor (option)	LE Sensor (Fake fingerprint detection)
F/P Storage	2K,10K,30K,50K
Camera	1.3M Pixel( 10K pics saved)
Event Log	500K Events
IP 65	Waterproof
Network	485/TCP
WIFI	Yes (option)
USB	SD Memory card
Relay	2
Door Phone	Visual and voice interface based on IP
POE (Power of Ethernet)	Yes
RF card	EM/HID/MIFARE/ICLASS
Wiegand Input	26/34/37bit
Wiegand Output	26/34/37bit
TTL Input	4Port
10KEY	Touch Keypad
Function Key	Touch Keypad
Product Size	118*163*40(mm)
External Reader connection (485)	Yes (Max 4)
Voice Output	Yes
LED	BLUE, RED
Tamper Switch	Yes
F/P touch sensor	Yes
DHCP	Yes
Power	12V
Humidity	20% ~ 80%
Temperature	-10 ~60
Language	English/Arabic/Persian/Chinese/Spanish/Greek

## System Configuration



## TRUSTONE Global Co., LTD

#108, University Industry Academy Cooperation Group A-Ju University, 5 on Mountain Woncheon-dong, Yeongtong-gu, Suwon-Si, Gyeonggi-do, Zip 443-749, Korea  
TEL 82-70-8630-3015 FAX 82-31-219-2204

www.trustone.co.kr