

NOT
JUST A
DASH
CAM

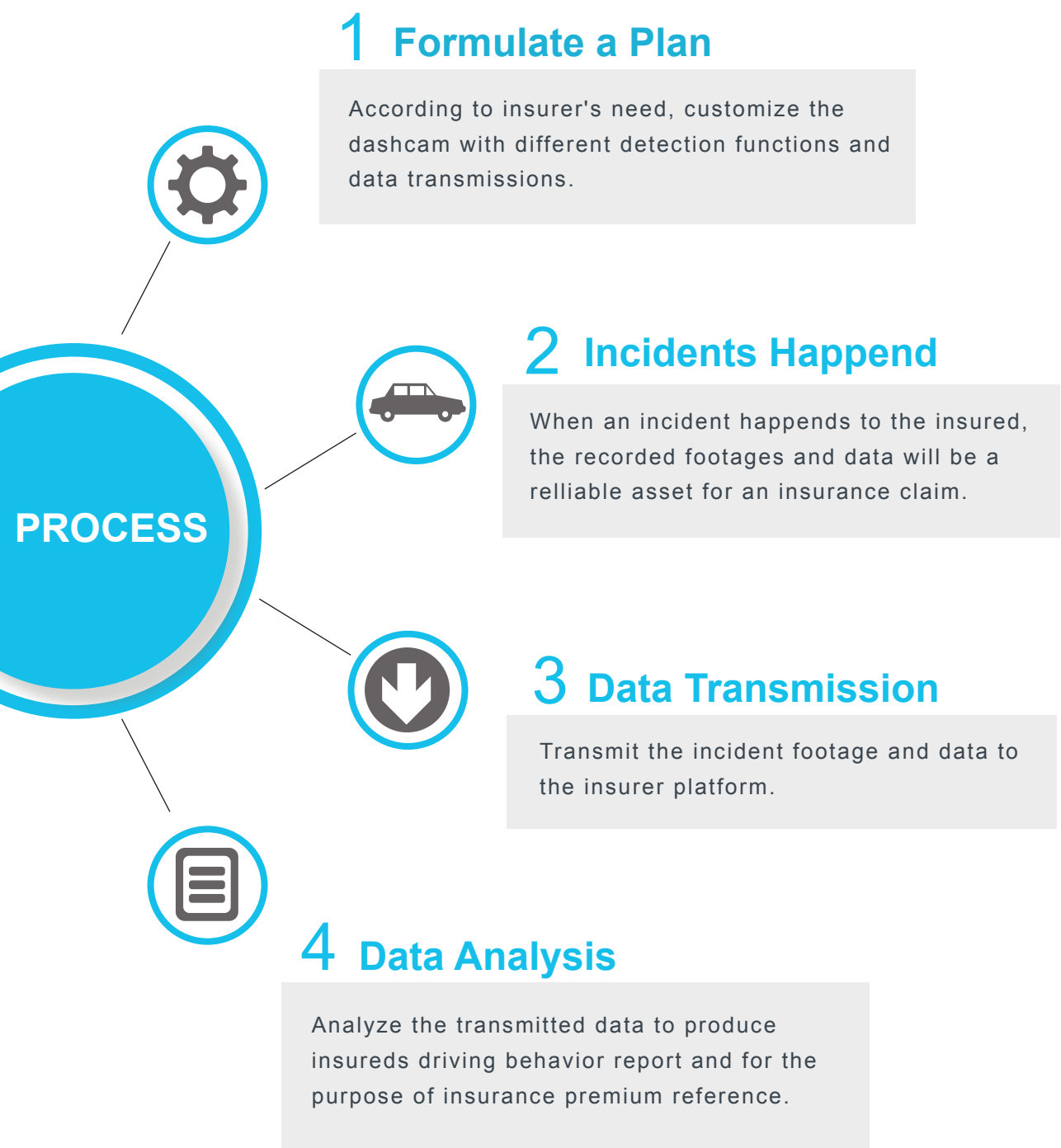
WIN-WIN SITUATION

This program not only reduces the unnecessary cost from the processes but also provides the reference for the insurance policy base on the data.

NOT
JUST A
DASH
CAM

INSURANCE
PROJECT

Insurance is there to protect you from risk and uncertain loss. Just like the dashcam is there to help you if any incident happens. Now you don't have to worry about it. We've already taken your best interest into account!



After the accident, footages from the dashcam can accelerare the identification of liability and the insurance claim process. Therefore the insurer and the insured get the benefits at the same time!

Benefits for Insured

Premium Deduction

Insurance premium deduction, complimentary installation or dashcam.
(depend on the insurer)

Option

The insured can choose from automatic to manual footages transmit mode.

Privacy Protection

Only transmit the particular part of the accidaent related footages and data.
(won't take up too much of mobile data rate)

Through mobile APP, the insure can provid instant and convenient service for insured. Cusromization based on three main features: matchig with different functions, transmit mode and the drivinfg bahavior reprot that provid reference for the insurance premium.



Main Features

1 Customized Functions

Vacron offers durable and stable dashcam equipped with SOS emergency button to immediately call emergency services and inform the insurer. Also matched with various features of driving behavior detections (including speeding, idling, emergency brake, collision and etc.).

2 Transmit Mode

After detecting the incident, the device will transmit the footages and data to the the police and insurer platfroms automatically or manually.

Automatically:detect the accident and upload immediately
Manually:through app from the mobile

3 Driving Behavior Report

Coordinate with the insurers data collectoin needs and integrate hardware and software functions. Creat the driving behavior report from analyzing and intergrating data, in the purpose of poviding insurance policy and premium reference for both insurer and insured.