

KECAP series

PC BASED DVR BOARD

This is unique DVR board that supports up to 64ch with Dual board function



DVR Application : Pillar

Feature

- . Video Input : 16ch (Expandable up to 32ch with Option Board)
- . Audio : 16ea
- . High Resolution : 352x240/ 704x240/ 704x480
- . DIY Cell Editor
- . Support Drag & Drop (Switching Channel)
- . TV out : 2ch TV out/ switchable 1ch in Full Screen/ S/W Quad
- . Various Schedule Recording (Sensor/ Continuous/ Motion/ Sensor&Motion)
- . Pan/Tilt/Zoom Supportable
- . Watchdog
- . User Friendly GUI
- . Support All Language (DIY Translation)
- . Central Monitoring System (CMS)
- . Web Viewer
- . Software Development Kit (SDK) for Developers
- . Support Linux Application

PC Based DVR Board **KECAP 50B**



- Video Input : 16ea only
- Video Input Connector : DVI Type 16ch BNC Cable (Need 1 for 16ch)
- Audio Input : 4ea
- Display FPS : 60fps(NTSC) / 50fps(PAL)
- Capturing FPS : 60fps(NTSC) / 50fps(PAL)
- Resolution Supported : QCIF / CIF / 2CIF / 4CIF
- Captured Data Format : YUV422, YUV411 Selectable
- Supported Driver & SDK : Windows(XP/Vista), Linux

PC Based DVR Board **KECAP 100B**

- Video Input : 16ea default (Expandable to 24, 32, 64)
- Video Input Connector : DVI Type 16ch BNC Cable (Need 1 for 16ch)
- Audio Input : 8ea (Default) / 16ea (Dual Board)
- Display FPS : 120fps(NTSC) / 100fps(PAL) / x2 Dual Board
- Capturing FPS : 120fps(NTSC) / 100fps(PAL) / x2 Dual Board
- Resolution Supported : QCIF / CIF / 2CIF / 4CIF
- Captured Data Format : YUV422, YUV411 Selectable
- Supported Driver & SDK : Windows(XP/Vista), Linux



PC Based DVR Board **KECAP 200B**



- Video Input : 16ea default (Expandable to 24, 32)
- Video Input Connector : DVI Type 16ch BNC Cable (Need 1 for 16ch)
- Audio Input : 16ea
- Display FPS : 240fps(NTSC) / 200fps(PAL)
- Capturing FPS : 240fps(NTSC) / 200fps(PAL)
- Resolution Supported : QCIF / CIF / 2CIF / 4CIF
- Captured Data Format : YUV422, YUV411 Selectable
- Supported Driver & SDK : Windows(XP/Vista), Linux

XECAP series

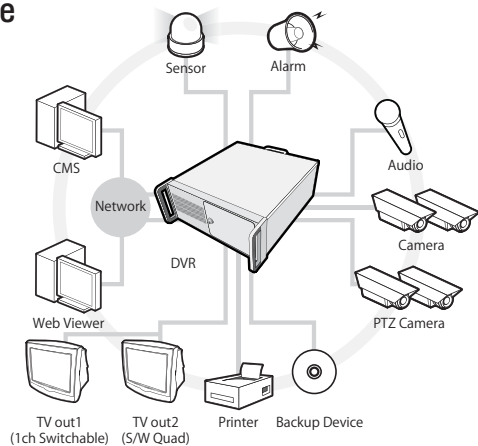
PC BASED DVR BOARD

This is unique DVR board that supports up to 64ch with Dual board function

Specification

MODEL		XECAP 50B	XECAP 100B	XECAP 200B
Video	Video Input	16ch	16ch / Max. 64ch (Dual board) Option1 : +8ch (Total 24ch) Option2 : +16ch (Total 32ch)	16ch Option1 : +8ch (Total 24ch) Option2 : +16ch (Total 32ch)
	Compression	MPEG4 / H.264		
	Output	TV Output 2ch (1ch : Full Screen / 1ch : S/W Quad)		
	Input Mode	NTSC / PAL		
Resolution	Connection	DVI to BNC(18ch) cable		
	NTSC	352 x 240, 704 x 240, 704 x 480		
	PAL	352 x 288, 704 x 288, 704 x 576		
Display / Record	Screen Division	Multi screen division supported(DIY edition : up to 100 cells)		
	NTSC (Display/Record)	60fps / 60fps	120fps / 120fps	240fps / 240fps
	PAL (Display/Record)	50fps / 50fps	100fps / 100fps	200fps / 200fps
	Data Size	MPEG4 : 5~7Kbytes / H.264 : 3~10kbytes		
Network	Record Modes	Schedule / Continuous / Sensor / Motion Detection / Audio Detection		
	Interface	RJ-45 LAN (10/100 base Ethernet)		
	Protocol	TCP/IP, DHCP, ADSL		
Audio	Program	Web-Viewer, CMS Software (Real-Live View, Remote, Search, PTZ Control)		
	Input / Output Connection	Input : 4ch / Output : 1ch	Input : 8ch / Output : 1ch	Input : 16ch / Output : 1ch
Sensor		DIO(0404 / 0804 / 0808 / 1608) (Selective)		
Serial Interface		RS-485/422, RS-232C (Pan/Tilt/Zoom Control)		
Data Backup		HDD / CD-RW / USB / AVI etc.		
Operating System		Windows (2000, XP) / Linux(Driver, Application) supported		
OSD (On Screen Display)		GUI, all language available (DIY)		
Features	DDNS	Comart DDNS server operated (DDNS)		
	S/W	CMS(Central Monitoring System) function supported		
		Remote setup available		
		User friendly setup environment		
System Restore	Providing SDK(Software Development Kit) for developers			
Power Consumption		3.915 W	6.3 W	8.4 W
Dimensions		153mm x 109 mm	162mm x 109 mm	189mm x 109 mm
Weight		124 g	155 g	158 g
Recommended PC Specification	CPU	Intel Cel 2.0 GHz	Intel P4 2.4 GHz	Intel P4 2.8 GHz
	M/B (Motherboard)	Recommend : Intel chipset (Some VIA, SIS chipset available)		
	VGA	ATI Radeon-9200SE or higher version		
	RAM	512MB		

Usage



Accessories



HICAP series

PC BASED DVR BOARD

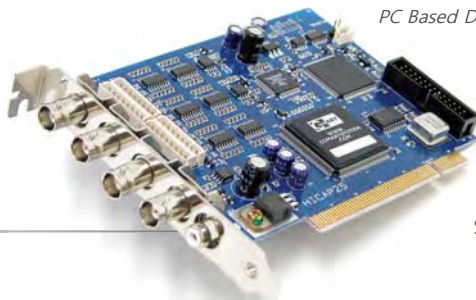
Best DVR models with user friendly application. Hicap series support fast recording. These products are kind of economy versions. Each model can monitor and record images at 25/50/100 fps respectively.



DVR Application : Pillar

Feature

- . Selectable Code Compression : MPEG4 / H.264
- . Audio : 1ea (PC Audio Connection)
- . High Resolution : 352x240/ 704x240/ 704x480
- . DIY Cell Editor
- . TV out : Switchable 1ch in Full Screen
- . Various Schedule Recording (Sensor/ Continuous/ Motion/ Sensor&Motion)
- . Pan/Tilt/Zoom Supportable
- . Watchdog
- . User friendly GUI
- . Central Monitoring System (CMS)
- . Support All languages (DIY Translation)
- . Web Viewer
- . Software Development Kit (SDK) for Developers
- . Support Linux Application

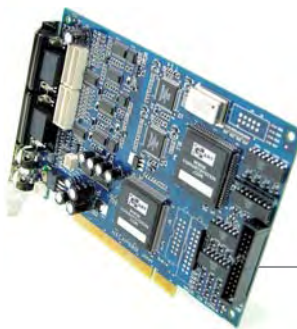


PC Based DVR Board **HICAP 25**

- Video Input : 4ea Default (Expandable 8, 16)
- Video Input Connector : DB9 Type 8ch BNC Cable
- Display FPS : 30fps(NTSC) / 25fps(PAL)
- Capturing FPS : 30fps(NTSC) / 25fps(PAL)
- Video Compression : MJPEG / MPEG4
- Resolution Supported : QCIF / CIF / 2CIF / 4CIF
- Captured Data Format : YUV422
- Supported Driver & SDK : Windows, Linux

PC Based DVR Board **HICAP 50**

- Video Input : 16ea
- Video Input Connector : DB9 Type 8ch BNC Cable
- Display FPS : 60fps(NTSC) / 50fps(PAL)
- Capturing FPS : 60fps(NTSC) / 50fps(PAL)
- Video Compression : MJPEG / MPEG4
- Resolution Supported : QCIF / CIF / 2CIF / 4CIF
- Captured Data Format : YUV422
- Supported Driver & SDK : Windows, Linux



PC Based DVR Board **HICAP 100**

- Video Input : 16ea
- Video Input Connector : DB9 Type 8ch BNC Cable
- Display FPS : 120fps(NTSC) / 100fps(PAL)
- Capturing FPS : 120fps(NTSC) / 100fps(PAL)
- Video Compression : MJPEG / MPEG4
- Resolution Supported : QCIF / CIF / 2CIF / 4CIF
- Captured Data Format : YUV422
- Supported Driver & SDK : Windows, Linux



HICAP series

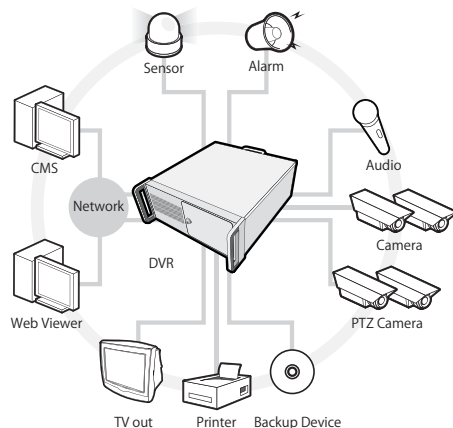
PC BASED DVR BOARD

Best DVR models with user friendly application. Hicap series support fast recording.
These products are kind of economy versions. Each model can monitor and record images at 25/50/100 fps respectively.

Specification

MODEL		HICAP 25	HICAP 50	HICAP 100	HICAP 200
Video	Video Input	4ch (Default) Option : 8/16CH	16ch	16ch	16ch
	Compression	MPEG4 / H.264			
	Output	TV out (1ch Full Screen)			
	Input Mode	NTSC / PAL			
Resolution	Connection	BNC (8ch x2) Cable			
	NTSC	352x240, 704x240, 704x480			
	PAL	352x288, 704x288, 704x576			
Display / Record	Screen Division	Multi Screen division supported (DIY edition : up to 100 cells)			
	NTSC (Display/Record)	30fps / 30fps	60fps / 60fps	120fps / 120fps	240fps / 240fps
	PAL (Display/Record)	25fps / 25fps	50fps / 50fps	100fps / 100fps	200fps / 200fps
	Data Size	MPEG4 : 5~20 Kbytes / H.264 : 3~10kbytes			
Network	Record Modes	Schedule / Continuous / Sensor / Motion Detection / Audio Detection			
	Interface	RJ-45 LAN (10/100 base Ethernet)			
	Protocol	TCP/IP / DHCP / ADSL			
Audio	Program	Web-Remote, CMS Software (Real-Live View / Search / PTZ Control)			
Audio	Input	1ch (PC Audio)			
Sensor		DIO (0404/ 0804/0808) (Selective)	DIO1604 Only		
Serial Interface		RS-485/422, RS-232C (Pan/Tilt/Zoom Control)			
Data Backup		HDD, CD-RW, USB, AVI etc.			
Operating System		Windows (2000, XP) / Linux(Driver, Application) supported			
OSD (On Screen Display)		GUI, all language available (DIY)			
Features	DDNS	Comart DDNS server operated (DDNS)			
	S/W	CMS(Central Monitoring System) function supported			
		Remote setup available			
		User friendly setup environment			
System Restore	Providing SDK(Software Development Kit) for developers				
Power Consumption		2W	4.3W	7.9W	13.0W
Dimensions		131mm x 100mm	160mm x 110mm	200mm x 110mm	265mm x 110mm
Weight		120g	141g	168.5g	171g
Recommended PC Specification	CPU	Intel P4 1.8 GHz or Cel 2.0 GHz		Intel P4 2.0 GHz	Intel P4 2.4 GHz
	M/B (Motherboard)	Recommend : Intel chipset (Some VIA, SIS chipset available)			
	VGA	ATI Radeon-9200SE or higher version			
	RAM	512MB			

Usage



Accessories

for HICAP 25



New DIO 0404
Sensor In : 4ea
Alarm Out : 4ea
RS 422/485



New DIO 0804
Sensor In : 8ea
Alarm Out : 4ea
RS 422/485



New DIO 0808
Sensor In : 8ea
Alarm Out : 8ea
RS 422/485

for HICAP 50/100/200



DIO 1604
Sensor In: 16ea
Alarm Out: 4ea
RS 422/485



4ch BNC Guide
+4ch



16ch BNC Guide
+16ch

XED series

PC BASED DVR BOARD

The best DVR solution for most serious Digital Video Recording applications that require real-time display and recording for 16 videos & audios.



DVR Application : Pillar

Feature

- . Real Live Display
- . Video Input : 16ch
- . Audio : 16ea
- . High Resolution: 352x240/ 704x240/ 704x480
- . TV out : 1ch TV out/ Same as VGA
- . Various Schedule Recording (Sensor/ Continuous/ Motion/ Sensor&Motion)
- . Pan/Tilt/Zoom Supportable
- . Watchdog
- . User Friendly GUI
- . Support All Language (DIY translation)
- . Central Monitoring System (CMS)
- . Web Viewer
- . Software Development Kit (SDK) for developers
- . Support Linux application



PC Based DVR Board **XED 4010**

- Video Input : 16ea
- Video Input Connector : DVI Type 16ch BNC Cable (Need 1 for 16ch)
- Audio Input : 16ea
- Display FPS : Real-Live
- Capturing FPS : 120fps(NTSC) / 100fps(PAL)
- Resolution Supported : QCIF / CIF / 2CIF / 4CIF
- Captured Data Format : YUV422
- Supported Driver & SDK : Windows (XP/Vista), Linux

PC Based DVR Board **XED 4020**

- Video Input : 16ea
- Video Input Connector : DVI Type 16ch BNC Cable (Need 1 for 16ch)
- Audio Input : 16ea
- Display FPS : Real-Live
- Capturing FPS : 240fps(NTSC) / 200fps(PAL)
- Resolution Supported : QCIF / CIF / 2CIF / 4CIF
- Captured Data Format : YUV422
- Supported Driver & SDK : Windows (XP/Vista), Linux



PC Based DVR Board **XED 4040**

- Video Input : 16ea
- Video Input Connector : DVI Type 16ch BNC Cable (Need 1 for 16ch)
- Audio Input : 16ea
- Display FPS : Real-Live
- Capturing FPS : 480fps(NTSC) / 400fps(PAL)
- Resolution Supported : QCIF / CIF / 2CIF / 4CIF
- Captured Data Format : YUV422
- Supported Driver & SDK : Windows (XP/Vista), Linux



XED series

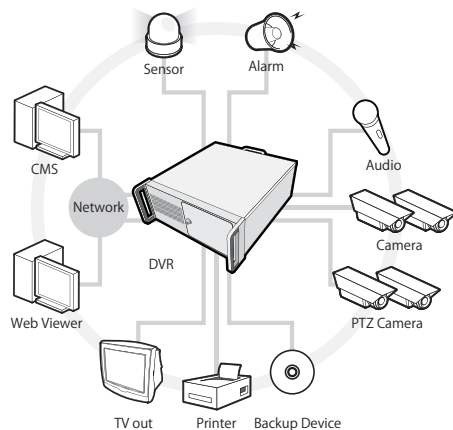
PC BASED DVR BOARD

The best DVR solution for most serious Digital Video Recording applications that require real-time display and recording for 16 videos & audios.

Specification

MODEL		XED 4010	XED 4020	XED 4040
Video	Video Input	16 ch	16 ch	16 ch
	Compression	MPEG4 / H.264		
	Output	TV Output Available (Selective 1ch full screen, same as VGA)		
	Input Mode	NTSC / PAL		
Resolution	Connection	DVI to BNC (16ch) cable		
	NTSC	352x240, 704x240, 704x480		
	PAL	352x288, 704x288, 704x576		
Display / Record	Screen Division	Multi screen division supported		
	NTSC (Display/Record)	480fps / 120fps	480fps / 240fps	480fps / 480fps
	PAL (Display/Record)	400fps / 100fps	400fps / 200fps	400fps / 400fps
	Data Size	MPEG4 : 5~7 Kbytes / H.264 : 3~10kbytes		
Network	Record Modes	Schedule / Continuous / Sensor / Motion Detection / Audio Detection		
	Interface	RJ-45 LAN (10/100 base Ethernet)		
	Protocol	TCP/IP, DHCP, ADSL		
Audio	Program	Web-Viewer / CMS Software(Real-Live View / Remote / Search / PTZ Control)		
	Input / Output Connection	Input : 16ch / Output : 2ch(Line Output : 1ch / Speaker: 1ch) 16ch RCA cable (as default)		
Sensor		DIO (0404 / 0804 / 0808) (selective)		
Serial Interface		RS-485/422, RS-232C (Pan / Tilt / Zoom control)		
Data Backup		HDD / CD-RW / USB / AVI etc.		
Operating System		Windows (2000, XP) / Linux(Driver, Application) supported		
OSD (On Screen Display)		GUI, all language available (DIY)		
Features	DDNS	Comart DDNS server operated (DDNS)		
	S/W	CMS(Central Monitoring System) function supported		
		Remote setup available		
		User friendly setup environment		
System Restore	Providing SDK(Software Development Kit) for developers Watch-Dog (Auto Rebooting)			
Power Consumption		8.5W	8.5W	8.5W
Dimensions		185mm x 109mm	185mm x 109mm	185mm x 109mm
Weight		175g	177g	179g
Recommended PC Specification	CPU	Intel P4 2.4GHz or Intel Cel 2.8GHz higher version		
	M/B (Motherboard)	Recommend : Intel chipset (Some VIA, SIS chipset available)		
	VGA	ATI Radeon-9200SE or higher version		
	RAM	512MB		

Usage



Accessories



New DIO 0404
Sensor In : 4ea
Alarm Out : 4ea
RS 422/485



New DIO 0804
Sensor In : 8ea
Alarm Out : 4ea
RS 422/485



New DIO 0808
Sensor In : 8ea
Alarm Out : 8ea
RS 422/485

Pillar

DVR APPLICATION

Pillar application is designed for user friendly interface and provides versatile functions.
Pillar application can be installed with all PC based DVR cards of Comart System.



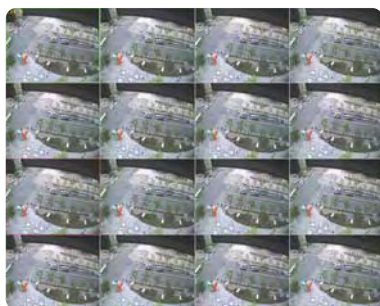
CMS



Live Mode

- . Support Multi-CODEC (MJPEG, MPEG4 and H.264)
- . Dynamic Application UI Size (optimized desktop screen size)
- . Support DIY Cell edition up to 10x10 divisions
- . Support Motion Detection, Audio and Sensor detection functions
- . Provide Utility; Log Viewer, Watermark Viewer
- . Support 43 PTZ protocol. All channels support PTZ camera setup
- . Support screen panorama and rotation function
- . Support 16ch Audio
- . Supported Smart Search, Live Zoom, E-map
- . Supported POS

Panorama



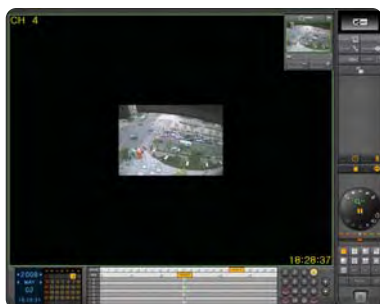
Record/ Search/ Backup

- . Emergency Record and Schedule Record
- . Support panorama search and bookmark function
- . Support Digital Zoom in/out
- . Support Export Capture images
- . Use own Image and Audio Format
- . Support AVI backup

CMS/ Network

- . Each Server support multi client connections
- . Each client support max 6 server, up to 100 channels
- . Support Dynamic IP: Comart DDNS Server provided
- . Support long distant control via network
- . Able to control main server from CMS
- . Record and Search on CMS

Zoom In / Out



Web Viewer



