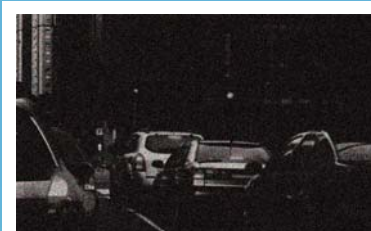


Full D1/ H.264 1CH Video Server Encoder



Video Server Encoder

Model	VS-2401
Type	1CH Video Server Encoder
Compression	H.264 / MJPEG / MPEG4
Hardware	Texas Instruments DaVinci TMS320DM365
Resolution	NTSC: D1 (720x480), CIF (352x240), QCIF (176x120) PAL: D1 (720x576), CIF (352x288), QCIF (176x144)
Frame Rate	Up to 30/25 (NTSC/PAL) in all resolutions
Audio Output	Yes
Audio Input	Microphone/ Line selectable
2-Way Audio	Yes
ActiveX support	Yes
Update	SD card, HTTP
Security	Multiple authorities levels, IP filtering
Alarm triggers	Motion Detection, Schedule, Alarm input, Ethernet loss, Network, Remote digital alarm input
Network Protocols	IPv4, APR, TCP, UDP, ICMP, DHCP, DNS, SMTP, FTP, HTTP, PPPoE, IP filtering, UPnP, RTP/RTSP/RTCP, HTTPS, Samba, NTP, DDNS
Video Input	Video Input x 1 (BNC)
Port function	USB port x 1
Local storage device	SD/ SDHC card slot
Software supported	Yes
Remote control	10 simultaneous users access
Power	DC 12V, PoE
Dimensions	80 (W) x 105 (D) x 34 (H) mm
Operating conditions	0°C ~ 45°C
Regulations	CE, FCC, RoHS



Low-light



WDR



Superior video quality in different lighting environments.

The brand-new Ultra Lowlight Color IP Camera Series offers superior images in unfavorable video surveillance conditions like low light and highly changeable lighting.

Full color in dark conditions Top performance in low-light

You can get clear and detailed images in full color even in extremely dark conditions.

The LC-75X4 series delivers a high quality performance in low-light conditions, and makes it easier to capture low-light situations without worrying about insufficient illumination.

Capturing extended dynamic range images

We offer images of an overall even quality, without too dark or too bright patches.

Wide Dynamic Range (WDR) technology captures clear images in conditions of extreme brightness and darkness, as well as in strongly backlit situations. Our LC-75X4 uses dual-exposure (known as "double-shutter") technology in video fields, and combines these two fields in one frame to get wider extended dynamic range images.

Central Management System – CMS-1030

The most user-friendly design with feature-rich functions for intelligent surveillance systems.

APPRO's CMS-1030 is an advanced video management software for all series of APPRO products. This simple-interface software supports 32-channel/MPEG4, MJPEG, H.264 viewing, recording, scan IP function, authority and event management, and remote operations by LAN or Internet.



*Design and specifications are subject to change without notice.



13F, No. 66, Zhongzheng Rd., Xinzhuang Dist.,
New Taipei City, Taiwan.
Tel : 886-2-8992-1177 ; Fax : 886-2-8992-0077
E-mail: appro@aprotech.com
Web site : www.aprotech.com



Optional mounting brackets for APPRO IP Domes

	MK-1417A (NTSC system)	Electrical Box for Pendant mount	157(W) x 155(L) x 55(H) mm Optional: MK-1423A		MK-1418	Corner mount	Optional: MK-1417A/B or MK-1428
	MK-1417B (PAL system)	Straight tube	17cm/ 30cm/ 50cm/ 80cm/ 120cm Optional: MK-1423B/ 1424B		MK-1423B	Pendant mount	149(R) x 201(H) mm
	MK-1424B	Gooseneck Arm mount	253(L) x 217(H) mm		MK-1425	Surface mount	142(R) x 40(H) mm
	MK-1427	Flush mount	190(R) x 75(H) mm		MK-1428	Wall mount	225(W) x 160(D) x 124(H) mm



2012 ~ 2013 Selection Guide

Ultra Low-light Color 1.3 Megapixel IP Cameras



Box IP Cam



Indoor Dome IP Cam



Outdoor Dome IP Cam



Bullet IP Cam

Model	LC-7514	LC-7524	LC-7534	LC-7554
Type	1.3 Mega Box IP Camera	1.3 Mega Dome IP Camera	1.3 Mega Dome IP Camera	1.3 Mega Bullet IP Camera
Compression	H.264 / MJPEG / MPEG4	H.264 / MJPEG / MPEG4	H.264 / MJPEG / MPEG4	H.264 / MJPEG / MPEG4
Image sensor	1/3 Sony Exmor 1.3M CMOS sensor	1/3 Sony Exmor 1.3M CMOS sensor	1/3 Sony Exmor 1.3M CMOS sensor	1/3 Sony Exmor 1.3M CMOS sensor
Hardware	Texas Instruments DaVinci TMS320DM368	Texas Instruments DaVinci TMS320DM368	Texas Instruments DaVinci TMS320DM368	Texas Instruments DaVinci TMS320DM368
O.S.	Linux kernel 2.6			
Sensor Pixel	1280x1024	1280x1024	1280x1024	1280x1024
Min Lux	Color: 0.05 Lux@F1.2 B/W: 0.01 Lux@F1.2	Color: 0.05 Lux@F1.2 B/W: 0.01 Lux@F1.2	Color: 0.05 Lux@F1.2 B/W: 0.01 Lux@F1.2	Color: 0.05 Lux@F1.2 B/W: 0.01 Lux@F1.2
Lens type	CS mount	Computar 3-9mm Vari-focal auto iris DC drive (Mega type)	Computar 3-9mm Vari-focal auto iris DC drive (Mega type)	Computar 3-9mm Vari-focal auto iris DC drive (Mega type)
Supports Auto Iris	Yes, DC-Iris			
Day & Night	Yes	Yes	Yes	Yes
WDR	Yes	Yes	Yes	Yes
2D/3D Noise Reduction	Yes	Yes	Yes	Yes
Mechanical IR Cut	Yes	Yes	Yes	Yes
Max. Image resolution (Aspect ratio)	"4:3" 1280x1024 "16:9" 1280x720	"4:3" 1280x1024 "16:9" 1280x720	"4:3" 1280x1024 "16:9" 1280x720	"4:3" 1280x1024 "16:9" 1280x720
Supports Multi-profile	Selectable / 3	Selectable / 3	Selectable / 3	Selectable / 3
Max. Frame Rate	1280x1024: Max. 30fps 1280x720: Max. 30fps (full color in lowlight)	1280x1024: Max. 30fps 1280x720: Max. 30fps (full color in lowlight)	1280x1024: Max. 30fps 1280x720: Max. 30fps (full color in lowlight)	1280x1024: Max. 30fps 1280x720: Max. 30fps (full color in lowlight)
Exposure Mode	Indoor, Outdoor, Night, Low-Noise, Moving, Customize 1~3, Schedule			
Motion Detection	Advanced MD (48 zones ; Sensitivity:0~100%)			
Pan/Tilt/Zoom Control	EPTZ			
Audio	Two-way audio (G.726 / G.711)			
Network Interface	Supports 10/100 base-TX, MDIX			
Network Protocols	IPv4, ARP, TCP/IP, UDP, ICMP, DHCP, HTTP, HTTPS, RTP/RTCP/RTSP, NTP, DNS, DDNS, PPPoE, UPnP, SAMBA, FTP, SMTP			
Alarm I/O	1/1	1/1	1/1	1/1
Analog Video output	Composite x 1	Composite x 1	Composite x 1	Composite x 1
Local storage device	SD/SDHC card slot			
Software supported	Free bundle of recording software / SDK, including HTTP-API / ActiveX / ONVIF			
Remote control	One camera can support 10 simultaneous client PCs			
Power	DC 12V, AC 24V, PoE			
Operating conditions	0°C to 50°C (-32°F to 122°F)		-40°C to 50°C (-40°F to 122°F)	
Regulations	CE, FCC, RoHS, C-Tick		CE, FCC, RoHS, C-Tick, IP-66, IK-10	

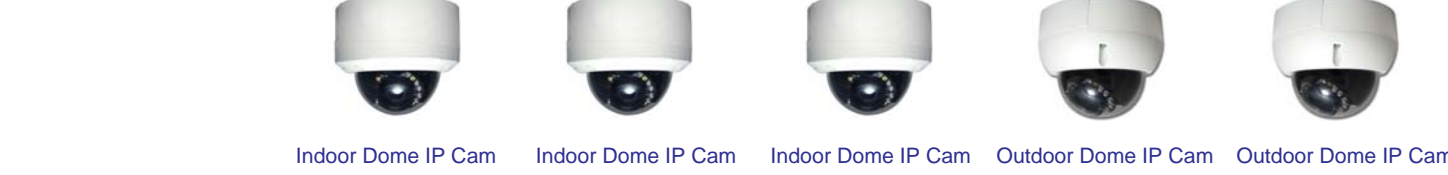


1.3 / 2.0 / 3.0 Megapixel IP Camera Series

APPRO Megapixel IP Camera Product Lines



Model	LC-7411	LC-7513	LC-7516	LC-7421	LC-7421AF
Type	1.3 Mega Box IP Camera	2.0 Mega Box IP Camera	3.0 Mega Box IP Camera	1.3 Mega Dome IP Camera	1.3 Mega Dome IP Camera
Compression	H.264 / MJPEG / MPEG4	H.264 / MJPEG / MPEG4	H.264 / MJPEG / MPEG4	H.264 / MJPEG / MPEG4	H.264 / MJPEG / MPEG4
Image sensor	1/3" Sony 1.3M CMOS sensor (035)	1/2.7" Omni Vision 2M CMOS sensor	1/2.8" Sony 3M CMOS sensor (036)	1/3" Sony 1.3M CMOS sensor (035)	1/3" Sony 1.3M CMOS sensor (035)
Hardware	Texas Instruments DaVinci TMS320DM365	Texas Instruments DaVinci TMS320DM368	Texas Instruments DaVinci TMS320DM368	Texas Instruments DaVinci TMS320DM365	Texas Instruments DaVinci TMS320DM365
O.S.	Linux kernel 2.6				
Sensor Pixel	1280x1024	1920x1080	2048x1536	1280x1024	1280x1024
Min Lux	Color: 0.2 Lux@F1.4 B/W: 0.01 Lux@F1.4	Color: 0.2 Lux@F1.2 B/W: 0.01 Lux@F1.2	Color: 0.2 Lux @ F1.2 B/W: 0.01 Lux @ F1.2	Color: 0.2 Lux@F1.4 B/W: 0.01 Lux@F1.4	Color: 0.4 Lux@F1.6 B/W: 0.04 Lux@F1.6
Lens type	CS mount			Vari-focal board type 3.3-12mm	Remote Motorized 3.3-12mm Vari-focal (VGA type)
Supports Auto Iris	DC-Iris				
Day & Night	Yes	Yes	Yes	Yes	Yes
WDR	Yes	N/A	Yes	Yes	Yes
Mechanical IR Cut	Yes	Yes	Yes	Yes	Yes
Max. Image resolution (Aspect ratio)	"4:3" 1280x1024 "16:9" 1280x720	"4:3" 1440x1080 "16:9" 1920x1080	"4:3" 2048x1536 "16:9" 1920x1080	"4:3" 1280x1024 "16:9" 1280x720	"4:3" 1280x1024 "16:9" 1280x720
Supports Multi-profile	Selectable / 3	Selectable / 3	Selectable / 3	Selectable / 3	Selectable / 3
Max. Frame Rate	30(25) fps in all resolutions	NTSC: Max. 30fps (1920x1080) PAL: Max. 25fps (1920x1080)	15fps at 2048x1536	30(25) fps in all resolutions	30(25) fps in all resolutions
Exposure Mode	Indoor, Outdoor, Night, Low-Noise, Moving, Customize 1~3, Schedule				
Motion Detection	Advanced MD (512 zones; Sensitivity:0~100%)				
Pan/Tilt/Zoom Control	EPTZ				
Audio	Two-way audio (G.726 / G.711)				
Network Interface	Supports 10/100 base-TX, MDIX				
Network Protocols	IPv4, ARP, TCP/IP, UDP, ICMP, DHCP, HTTP, HTTPS, RTP/RTCP/RTSP, NTP, DNS, DDNS, PPPoE, UPnP, SAMBA, FTP, SMTP				
Alarm I/O	1/1	1/1	1/1	1/1	1/1
Analog Video output	Composite x 1	Composite x 1	Composite x 1	Composite x 1	Composite x 1
Local storage device	SD/SDHC card slot				
Software supported	Free bundle of recording software / SDK, including HTTP-API / ActiveX / ONVIF				
Remote control	One camera can support 10 simultaneous client PCs				
Power	DC 12V, AC 24V, PoE				
Operating conditions	0°C to 50°C (32°F to 122°F)				
Regulations	CE, FCC, RoHS, C-Tick				



Model	LC-7523	LC-7523M	LC-7526	LC-7431	LC-7431AF
Type	2.0 Mega Dome IP Camera	2.0 Mega Dome IP Camera	3.0 Mega Dome IP Camera	1.3 Mega Dome IP Camera	1.3 Mega Dome IP Camera
Compression	H.264 / MJPEG / MPEG4	H.264 / MJPEG / MPEG4	H.264 / MJPEG / MPEG4	H.264 / MJPEG / MPEG4	H.264 / MJPEG / MPEG4
Image sensor	1/2.7" Omni Vision 2M CMOS sensor	1/2.7" Omni Vision 2M CMOS sensor	1/2.8" Sony 3M CMOS sensor (036)	1/3" Sony 1.3M CMOS sensor (035)	1/3" Sony 1.3M CMOS sensor (035)
Hardware	Texas Instruments DaVinci TMS320DM368	Texas Instruments DaVinci TMS320DM368	Texas Instruments DaVinci TMS320DM368	Texas Instruments DaVinci TMS320DM365	Texas Instruments DaVinci TMS320DM365
O.S.	Linux kernel 2.6				
Sensor Pixel	1920x1080	1920x1080	2048x1536	1280x1024	1280x1024
Min Lux	Color: 0.3 Lux@F1.4 B/W: 0.03 Lux@F1.4	Color: 0.2 Lux@F1.2 B/W: 0.01 Lux@F1.2	Color: 0.2 Lux @ F1.2 B/W: 0.01 Lux @ F1.2	Color: 0.2 Lux@F1.4 B/W: 0.01 Lux@F1.4	Color: 0.4 Lux@F1.6 B/W: 0.04 Lux@F1.6
Lens type	Computar 3.3-12mm Vari-focal auto iris DC drive (VGA type)	Computar 3-9mm Vari-focal auto iris DC drive (Mega type)	Computar 3-9mm Vari-focal auto iris DC drive (Mega type)	3.3-12mm Vari-focal board type (VGA type)	3.3-12mm Remote Motorized Vari-focal (VGA type)
Supports Auto Iris	DC-Iris				
Day & Night	Yes	Yes	Yes	Yes	Yes
WDR	N/A	N/A	Yes	Yes	Yes
Mechanical IR Cut	Yes	Yes	Yes	Yes	Yes
Max. Image resolution (Aspect ratio)	"4:3" 1440x1080 "16:9" 1920x1080	"4:3" 1440x1080 "16:9" 1920x1080	"4:3" 2048x1536 "16:9" 1920x1080	"4:3" 1280x1024 "16:9" 1280x720	"4:3" 1280x1024 "16:9" 1280x720
Supports Multi-profile	Selectable / 3	Selectable / 3	Selectable / 3	Selectable / 3	Selectable / 3
Max. Frame Rate	NTSC: Max. 30fps (1920x1080) PAL: Max. 25fps (1920x1080)	NTSC: Max. 30fps (1920x1080) PAL: Max. 25fps (1920x1080)	15fps at 2048x1536	30(25) fps in all resolutions	30(25) fps in all resolutions
Exposure Mode	Indoor, Outdoor, Night, Low-Noise, Moving, Customize 1~3, Schedule				
Motion Detection	Advanced MD (512 zones; Sensitivity:0~100%)				
Pan/Tilt/Zoom Control	EPTZ				
Audio	Two-way audio (G.726 / G.711)				
Network Interface	Supports 10/100 base-TX, MDIX				
Network Protocols	IPv4, ARP, TCP/IP, UDP, ICMP, DHCP, HTTP, HTTPS, RTP/RTCP/RTSP, NTP, DNS, DDNS, PPPoE, UPnP, SAMBA, FTP, SMTP				
Alarm I/O	1/1	1/1	1/1	1/1	1/1
Analog Video output	Composite x 1	Composite x 1	Composite x 1	Composite x 1	Composite x 1
Local storage device	SD/SDHC card slot				
Software supported	Free bundle of recording software / SDK, including HTTP-API / ActiveX / ONVIF				
Remote control	One camera can support 10 simultaneous client PCs				
Power	DC 12V, AC 24V, PoE				
Operating conditions	0°C to 50°C (32°F to 122°F)			-40°C to 50°C (-40°F to 122°F)	
Regulations	CE, FCC, RoHS, C-Tick			CE, FCC, RoHS, C-Tick, IP-66, IK-10	



Model	LC-7533	LC-7533M	LC-7536	LC-7451	LC-7451AF
Type	2.0 Mega Dome IP Camera	2.0 Mega Dome IP Camera	3.0 Mega Dome IP Camera	1.3 Mega Bullet IP Camera	1.3 Mega Bullet IP Camera
Compression	H.264 / MJPEG / MPEG4	H.264 / MJPEG / MPEG4	H.264 / MJPEG / MPEG4	H.264 / MJPEG / MPEG4	H.264 / MJPEG / MPEG4
Image sensor	1/2.7" Omni Vision 2M CMOS sensor	1/2.7" Omni Vision 2M CMOS sensor	1/2.8" Sony 3M CMOS sensor (036)	1/3" Sony 1.3M CMOS sensor (035)	1/3" Sony 1.3M CMOS sensor (035)
Hardware	Texas Instruments DaVinci TMS320DM368	Texas Instruments DaVinci TMS320DM368	Texas Instruments DaVinci TMS320DM368	Texas Instruments DaVinci TMS320DM365	Texas Instruments DaVinci TMS320DM365
O.S.	Linux kernel 2.6				
Sensor Pixel	1920x1080	1920x1080	2048x1536	1280x1024	1280x1024
Min Lux	Color: 0.3 Lux@F1.4 B/W: 0.03 Lux@F1.4	Color: 0.2 Lux@F1.2 B/W: 0.01 Lux@F1.2	Color: 0.2 Lux @ F1.2 B/W: 0.01 Lux @ F1.2	Color: 0.2 Lux@F1.4 B/W: 0.01 Lux@F1.4	Color: 0.4 Lux@F1.6 B/W: 0.04 Lux@F1.6
Lens type	Computar 3.3-12mm Vari-focal auto iris DC drive (VGA type)	Computar 3-9mm Vari-focal auto iris DC drive (Mega type)	Computar 3-9mm Vari-focal auto iris DC drive (Mega type)	3.3-12mm Vari-focal board type (VGA type)	3.3-12mm Remote Motorized Vari-focal (VGA type)
Supports Auto Iris	DC-Iris				
Day & Night	Yes	Yes	Yes	Yes	Yes
WDR	N/A	N/A	Yes	Yes	Yes
Mechanical IR Cut	Yes	Yes	Yes	Yes	Yes
Max. Image resolution (Aspect ratio)	"4:3" 1440x1080 "16:9" 1920x1080	"4:3" 1440x1080 "16:9" 1920x1080	"4:3" 2048x1536 "16:9" 1920x1080	"4:3" 1280x1024 "16:9" 1280x720	"4:3" 1280x1024 "16:9" 1280x720
Supports Multi-profile	Selectable / 3	Selectable / 3	Selectable / 3	Selectable / 3	Selectable / 3
Max. Frame Rate	NTSC: Max. 30fps (1920x1080) PAL: Max. 25fps (1920x1080)	NTSC: Max. 30fps (1920x1080) PAL: Max. 25fps (1920x1080)	15fps at 2048x1536	30(25) fps in all resolutions	30(25) fps in all resolutions
Exposure Mode	Indoor, Outdoor, Night, Low-Noise, Moving, Customize 1~3, Schedule				
Motion Detection	Advanced MD (512 zones; Sensitivity:0~100%)				
Pan/Tilt/Zoom Control	EPTZ				
Audio	Two-way audio (G.726 / G.711)				
Network Interface	Supports 10/100 base-TX, MDIX				
Network Protocols	IPv4, ARP, TCP/IP, UDP, ICMP, DHCP, HTTP, HTTPS, RTP/RTCP/RTSP, NTP, DNS, DDNS, PPPoE, UPnP, SAMBA, FTP, SMTP				
Alarm I/O	1/1	1/1	1/1	1/1	1/1
Analog Video output	Composite x 1	Composite x 1	Composite x 1	Composite x 1	Composite x 1
Local storage device	SD/SDHC card slot				
Software supported	Free bundle of recording software / SDK, including HTTP-API / ActiveX / ONVIF				
Remote control	One camera can support 10 simultaneous client PCs				
Power	DC 12V, AC 24V, PoE				
Operating conditions	-40°C to 50°C (-40°F to 122°F)				
Regulations	CE, FCC, RoHS, C-Tick, IP-66, IK-10				



Model	LC-7553	LC-7553M	LC-7553F	LC-7556
Type	2.0 Mega Bullet IP Camera	2.0 Mega Bullet IP Camera	2.0 Mega Bullet IP Camera	3.0 Mega Bullet IP Camera
Compression	H.264 / MJPEG / MPEG4	H.264 / MJPEG / MPEG4	H.264 / MJPEG / MPEG4	H.264 / MJPEG / MPEG4
Image sensor	1/2.7" Omni Vision 2M CMOS sensor	1/2.7" Omni Vision 2M CMOS sensor	1/2.7" Omni Vision 2M CMOS sensor	1/2.8" Sony 3M CMOS sensor (036)
Hardware	Texas Instruments DaVinci TMS320DM368	Texas Instruments DaVinci TMS320DM368	Texas Instruments DaVinci TMS320DM368	Texas Instruments DaVinci TMS320DM368
O.S.	Linux kernel 2.6			
Sensor Pixel	1920x1080	1920x1080	1920x1080	2048x1536
Min Lux	Color: 0.3 Lux@F1.4 B/W: 0.03 Lux@F1.4	Color: 0.2 Lux@F1.2 B/W: 0.01 Lux@F1.2	Color: 1.0 Lux@F1.5 B/W: 0.5 Lux@F1.5	Color: 0.2 Lux @F1.2 B/W: 0.01 Lux @F1.2
Lens type	Computar 3.3-12mm Vari-focal auto iris DC drive (VGA type)	Computar 3-9mm Vari-focal auto iris DC drive (Mega type)	4.0mm/F1.5, Fixed Iris Angle of view : 62° horizontal (Fixed Lens)	Computar 3-9mm Vari-focal auto iris DC drive (Mega type)
Supports Auto Iris	DC-Iris		N/A	DC-Iris
Day & Night	Yes	Yes	Yes	Yes
WDR	N/A	N/A	N/A	Yes
Mechanical IR Cut	Yes	Yes	Yes	Yes
Max. Image resolution (Aspect ratio)	"4:3" 1440x1080 "16:9" 1920x1080	"4:3" 1440x1080 "16:9" 1920x1080	"4:3" 1440x1080 "16:9" 1920x1080	"4:3" 2048x1536 "16:9" 1920x1080
Supports Multi-profile	Selectable / 3	Selectable / 3	Selectable / 3	Selectable / 3
Max. Frame Rate	NTSC: Max. 30fps (1920x1080) PAL: Max. 25fps (1920x1080)	NTSC: Max. 30fps (1920x1080) PAL: Max. 25fps (1920x1080)	NTSC: Max. 30fps (1920x1080) PAL: Max. 25fps (1920x1080)	15fps at 2048x1536
Exposure Mode	Indoor, Outdoor, Night, Low-Noise, Moving, Customize 1~3, Schedule			
Motion Detection	Advanced MD (512 zones; Sensitivity:0~100%)			
Pan/Tilt/Zoom Control	EPTZ			
Audio	Two-way audio (G.726 / G.711)			
Network Interface	Supports 10/100 base-TX, MDIX			
Network Protocols	IPv4, ARP, TCP/IP, UDP, ICMP, DHCP, HTTP, HTTPS, RTP/RTCP/RTSP, NTP, DNS, DDNS, PPPoE, UPnP, SAMBA, FTP, SMTP			
Alarm I/O	1/1	1/1	1/1	1/1
Analog Video output	Composite x 1	Composite x 1	Composite x 1	Composite x 1
Local storage device	SD/SDHC card slot			
Software supported	Free bundle of recording software / SDK, including HTTP-API / ActiveX / ONVIF			
Remote control	One camera can support 10 simultaneous client PCs			
Power	DC 12V, AC 24V, PoE			
Operating conditions	-40°C to 50°C (-40°F to 122°F)			
Regulations	CE, FCC, RoHS, C-Tick, IP-66, IK-10			