



Merit LILIN Application Note for Interoperable test of Genetec Omnicast Software and LILIN IP Cameras

Document Number : A00010

Date : 08/07/2012

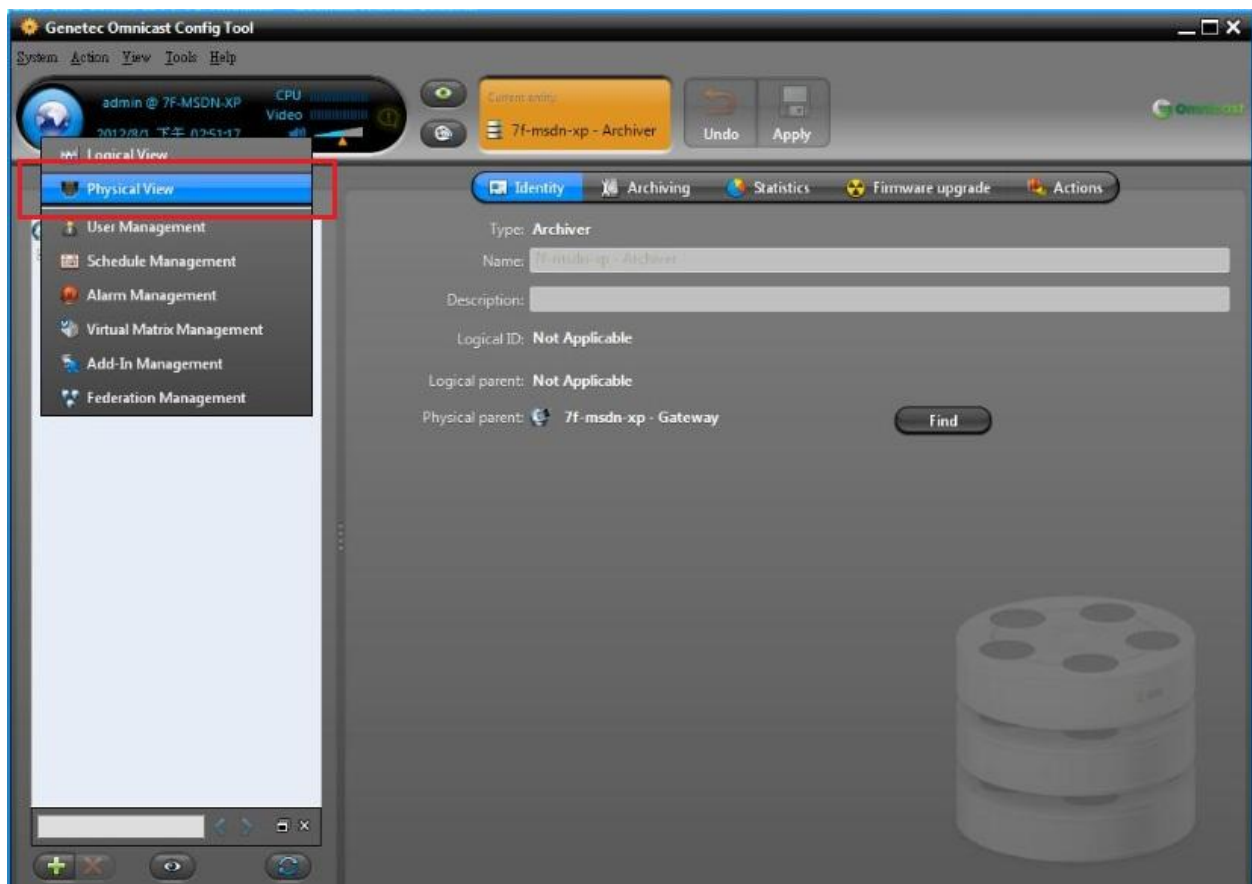
Dept : Technical Support, Taipei

Subject: Interoperable test of Genetec Omnicast Software and LILIN IP Cameras

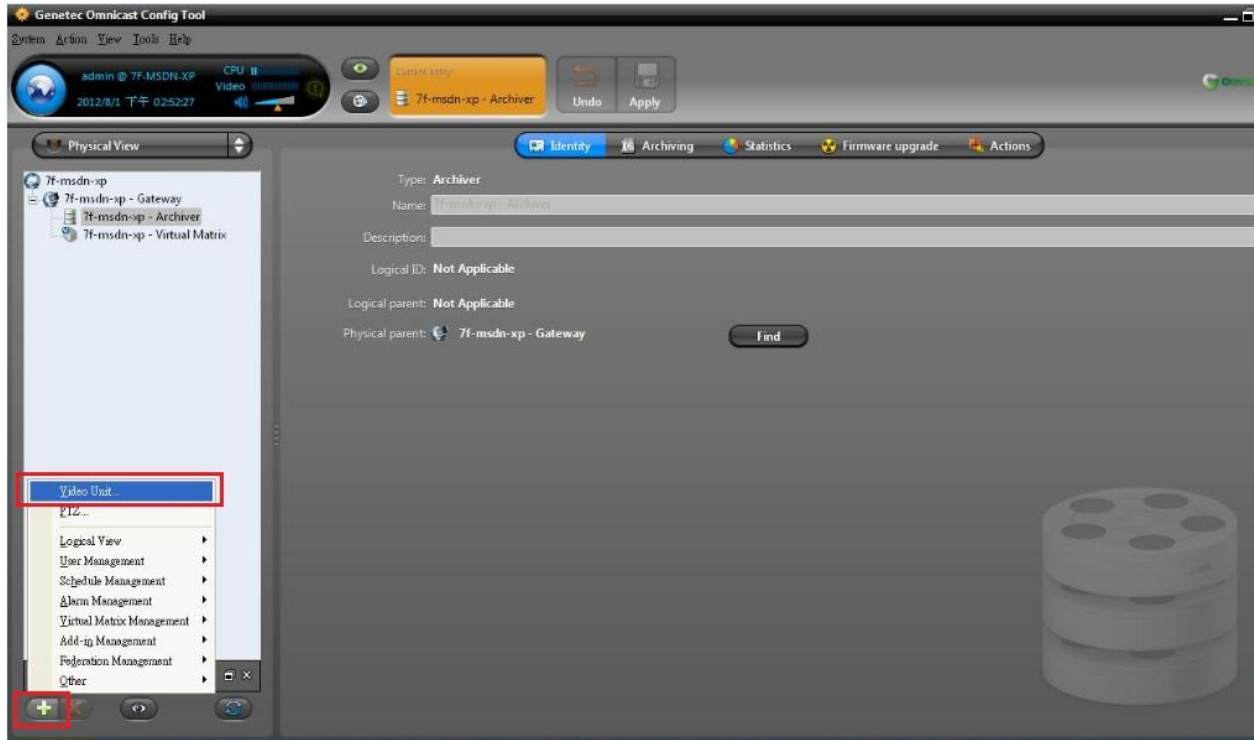
LILIN IP camera platform: 2MP & 3MP IP cameras
LILIN IP camera firmware: version: 1.0.486h or above
Genetec Omnicast software: V4.8.2201.19

Step #1:

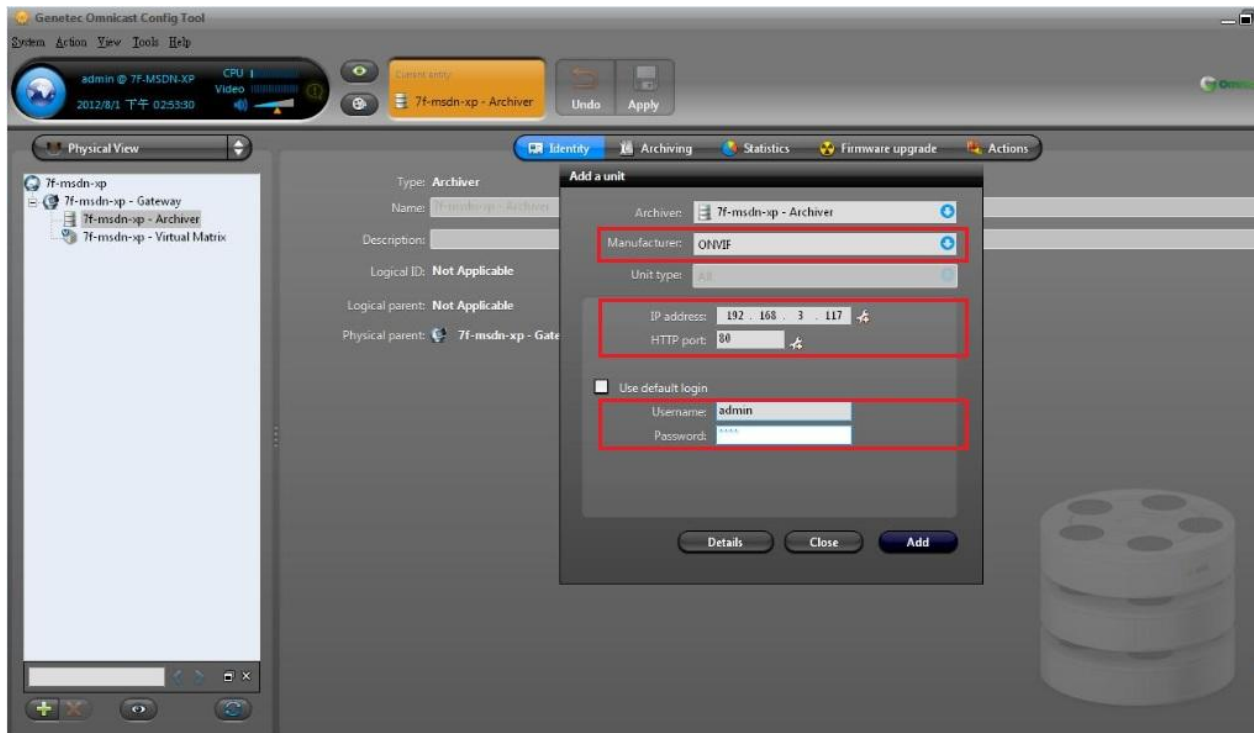
Please use the "Config Tool" to add LILIN's camera. Select "Physical View" as shown below:



Step #2:
Press the “+” sign and click on “Video Unit”.

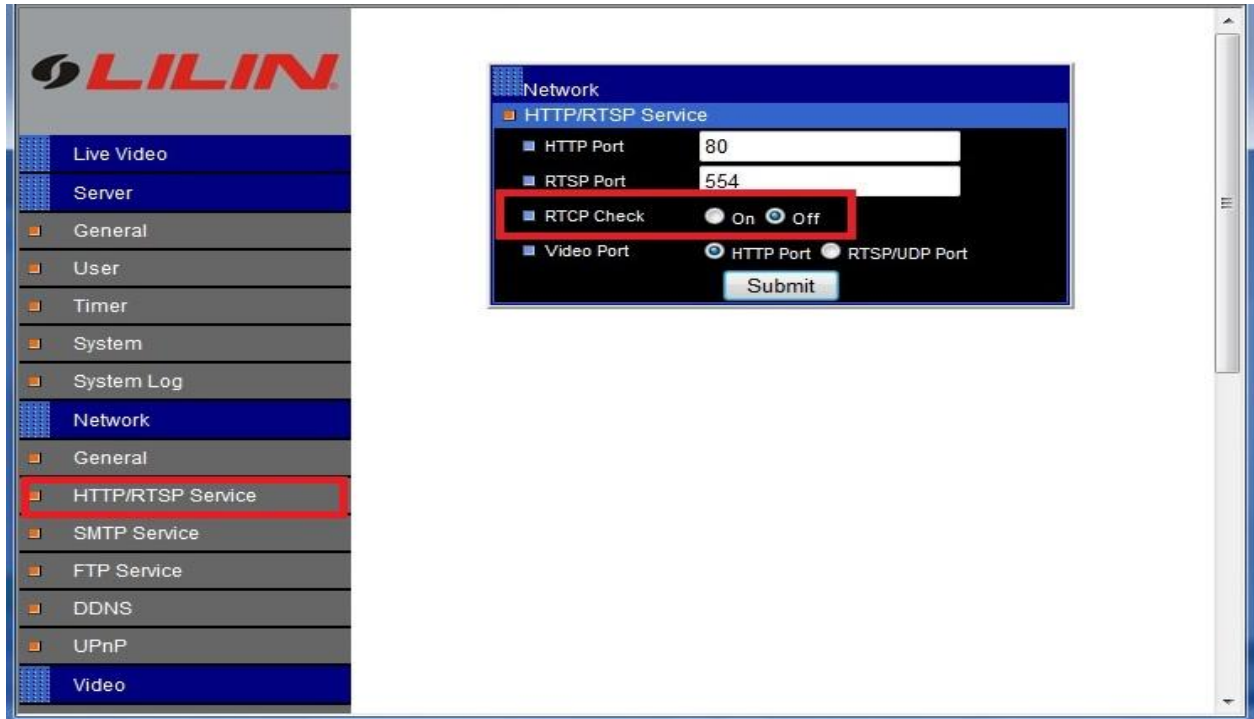


Step #3 :
Add a unit to the software like the picture below: Choose the Manufacturer as “ONVIF”. Enter the IP address, HTTP port, ID, and password of the camera. Press the “Add” button.



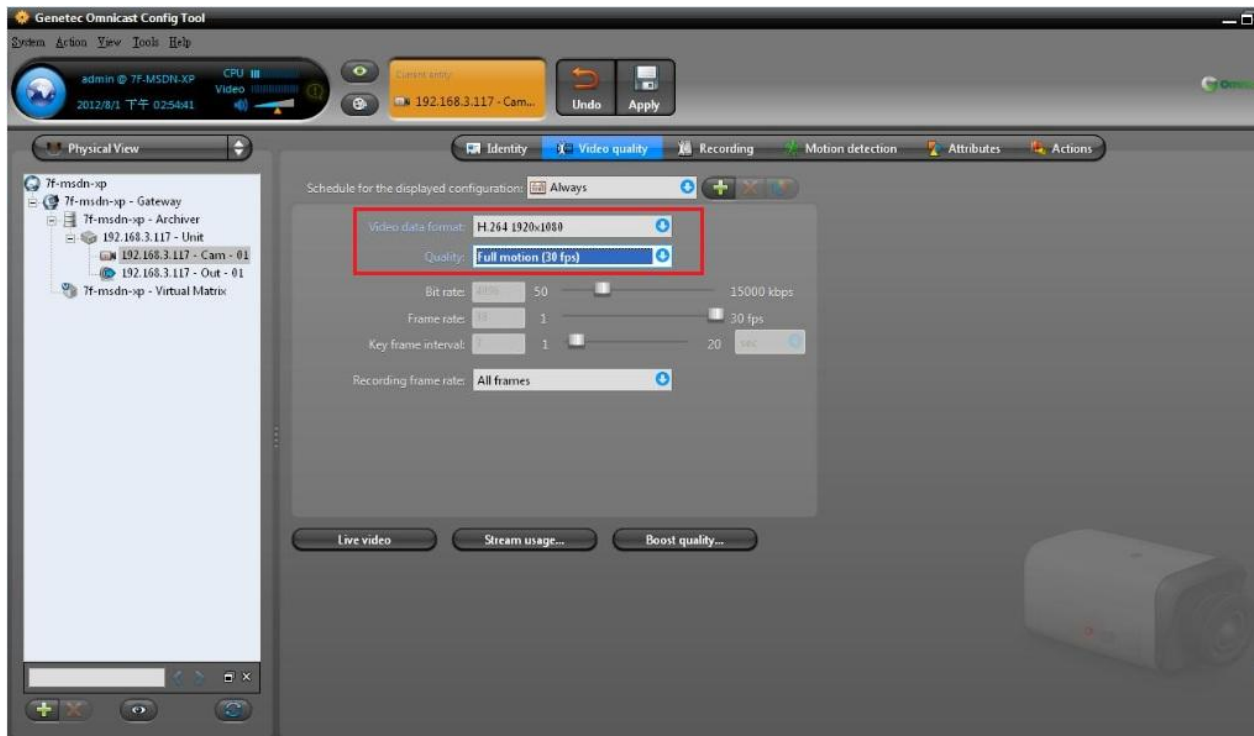
Step#4 :

Use IE browser to enter the camera settings and make sure that the “RTCP Check” feature is Off.



Step#5 :

Choose “Video Data Format” and “Quality”. Press the “Apply” button on the top.



Step#6:

After above settings are done, please use Genetec Omnicast Live Viewer to view the live video.

