

HMD

Head Mounted Display Module



Introduction

This HMD (Head Mounted Display) Module demonstrates the amazing visual technology behind the Averlogic Display Controller (AL320C-LF-PBF) & 8051 MCU products. Versatility, Capability and Low Power consumption makes it a perfect fit for portable visual/video devices. This board was designed with the KOPIN BDM-922K-NE Module, which supplies the two the eyepiece LCoS - these components accelerate product development and quicken the time-to-market. This head mounted display produces 922K colors and comes with lens and applications needed for HMD products. The software encryption technology can prevent the product from being illegally copied and ensures a unique, customized design.

Features

- Compact Footprint: 42*21*7mm
- Supports Composite Video input (PAL or NTSC auto-detection)

Features

- Active Resolution: VGA(640*480*RGB Pixels)
- Fully Compatible with BDM-922K-NE Module
- Low Power Consumption: +3.3V/280mA (Typical)

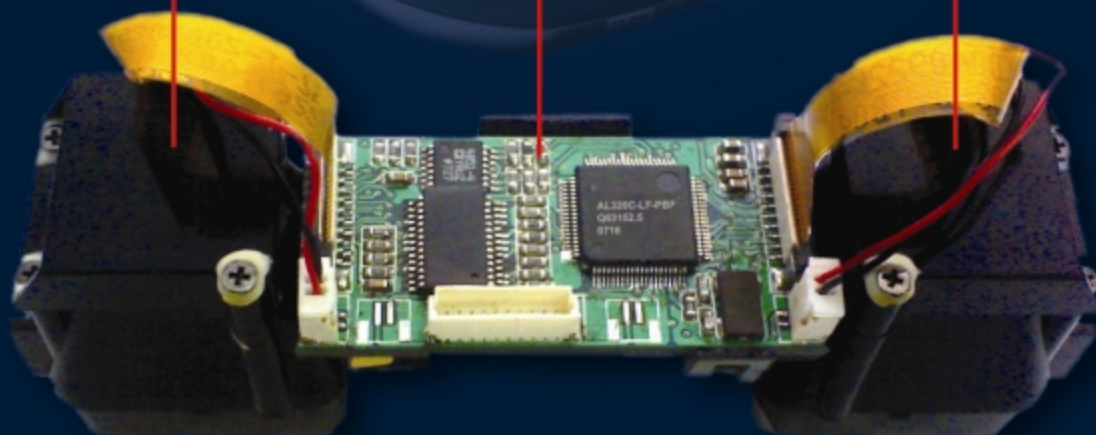
See back for more details

Application

Innovision HMD Module with AL320 and 8051 MCU

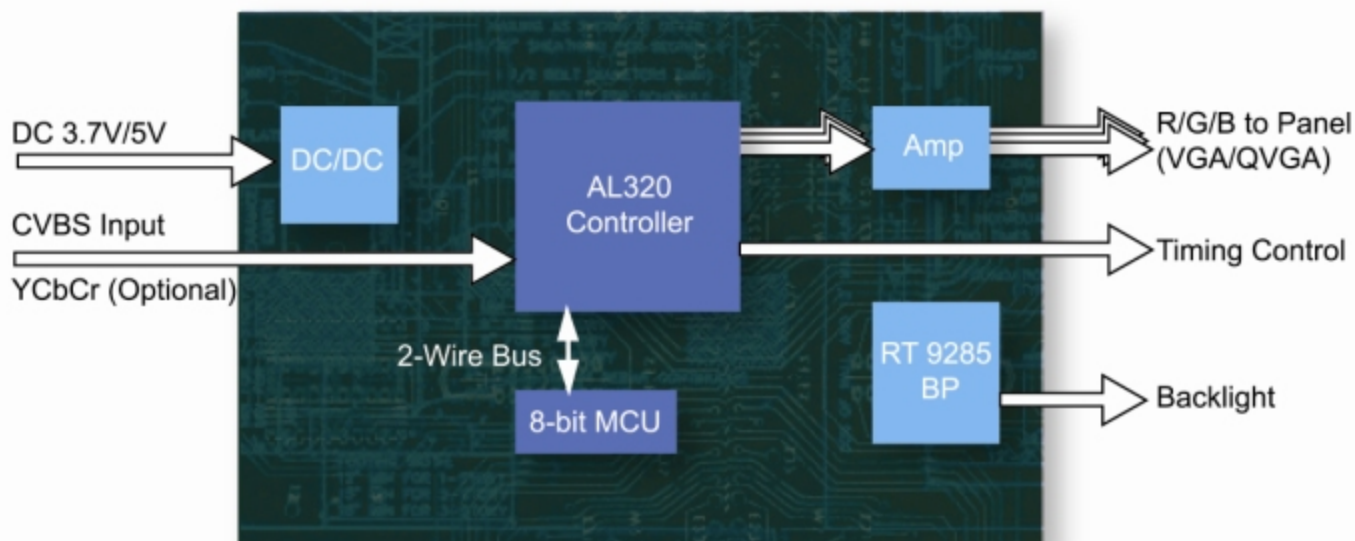
KOPIN BDM-922K-NE Module

KOPIN BDM-922K-NE Module

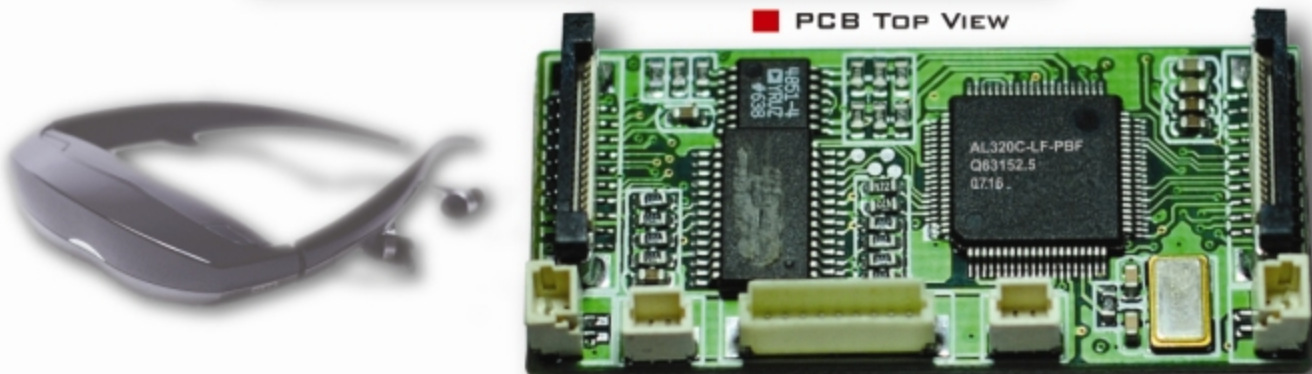


PCB Size: 44mm(L)*21mm(W)*7mm(Height)

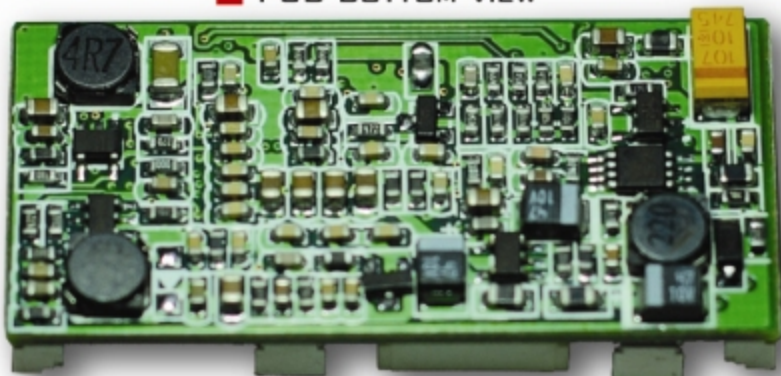
■ BLOCK DIAGRAM



■ PCB TOP VIEW



■ PCB BOTTOM VIEW



**InnoVision
Electronics Ltd.**

Email Contact
sales@innovision-elec.com

Telephone Contact
+86-755-88312324

Website
www.innovision-elec.com