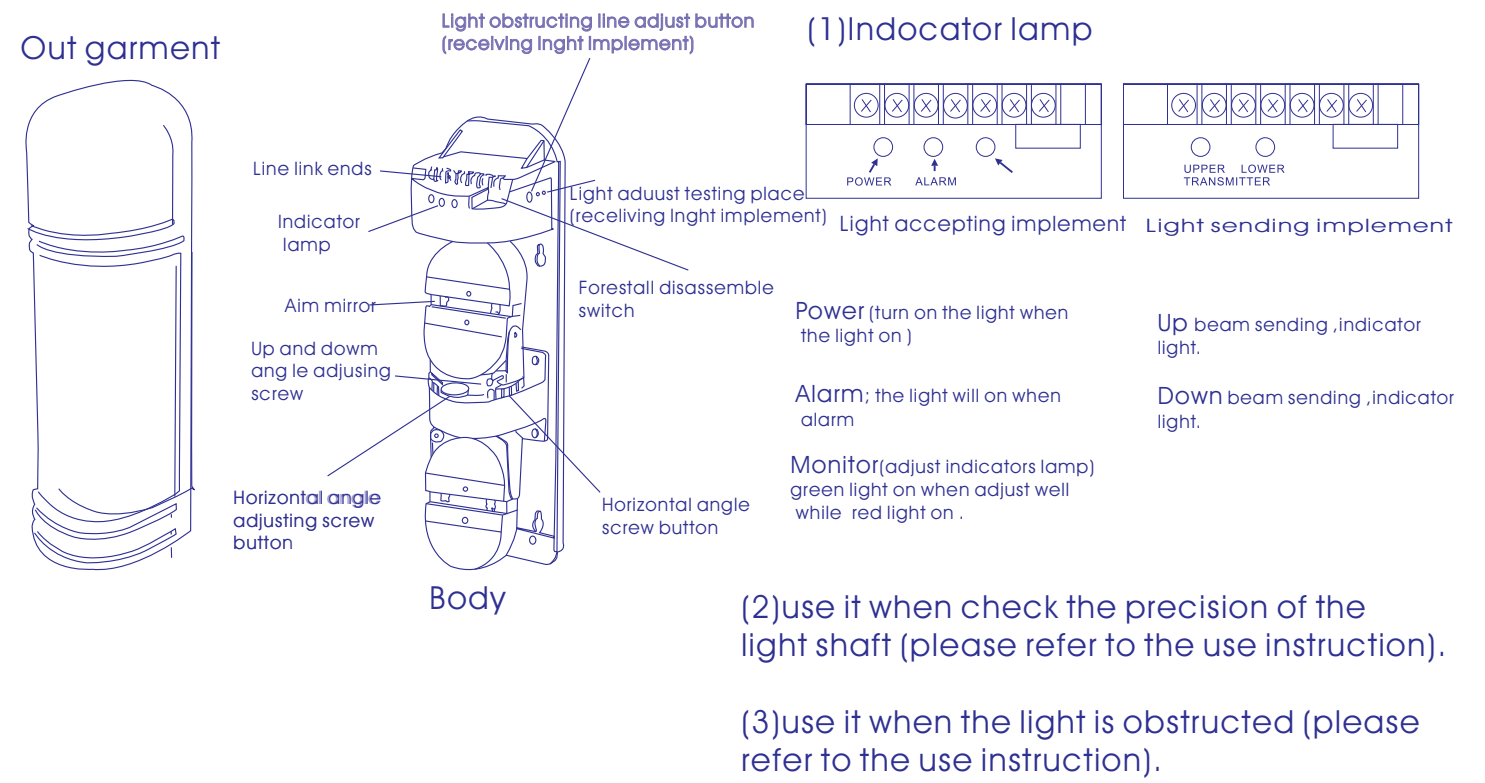


# DIGITAL ACTIVE INFRARED SENSOR

Outdoor 50M Indoor 150M  
 Outdoor 100M Indoor 300M  
 Outdoor 150M Indoor 450M  
 Outdoor 200M Indoor 600M  
 Outdoor 250M Indoor 750M

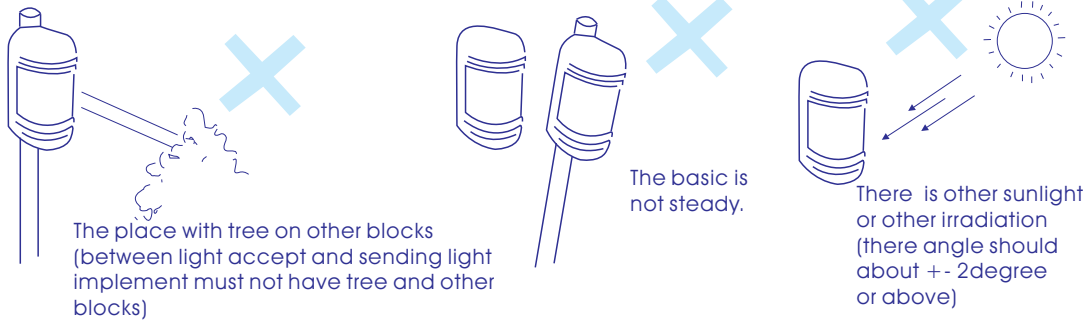
Thank you for your phrasing our products, before using our product, you should read this usage manual carefully, and you will can operate it in right way.

## 1 Each part name

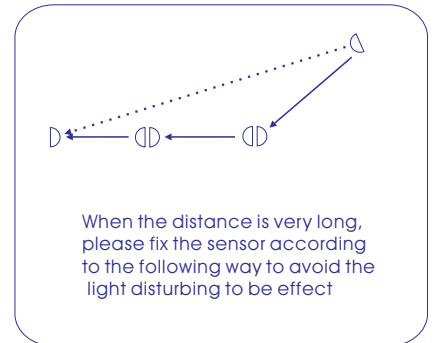
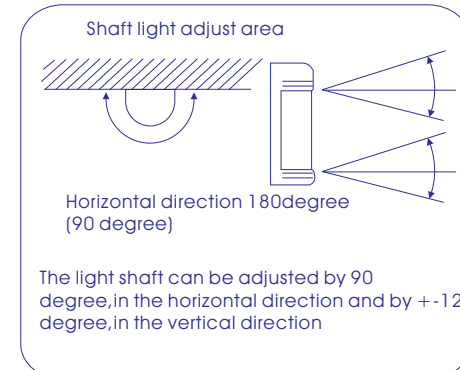
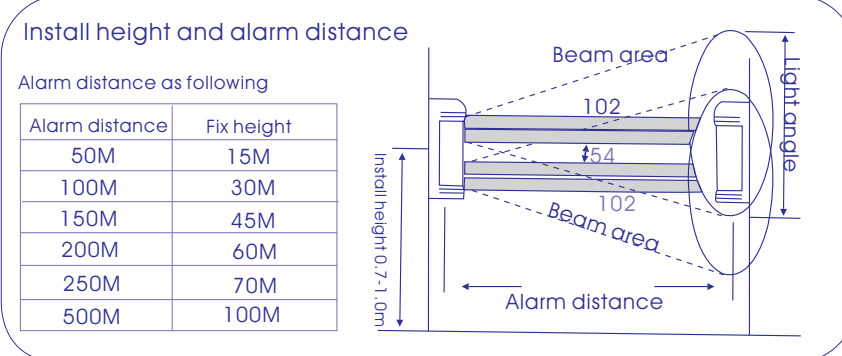


## 2 Attention

Please don not use the sensor in following place



In order to operate in right way, please install as fouowing



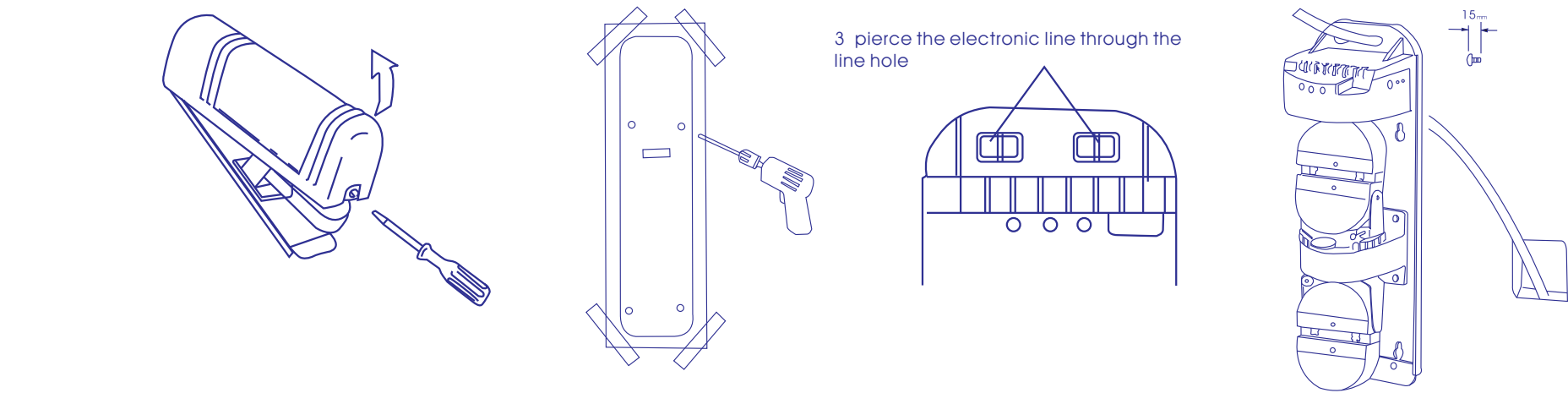
## 3 Fixing way

1 disassemble the screw and take down the outer garment.

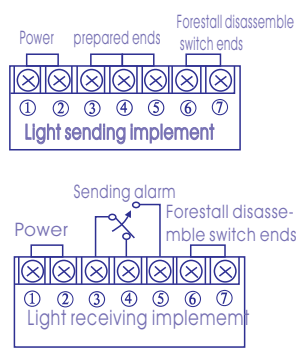
2 Stick the attached Fixing board on the wall and And holes it.

3 pierce the electronic line through the line hole

4 fix the body on the wall



5 fix the electronic line into link place



Alarm distance	50M		100M		150M		200M		250M	
	12V	24V	12V	24V	12V	24V	12V	24V	12V	24V
0.3mm <sup>2</sup> (Φ0.6)	115m	1000m	110m	950m	105m	900m	100m	875m	100m	850m
0.5mm <sup>2</sup> (Φ0.8)	200m	1800m	190m	1700m	180m	1600m	175m	1550m	170m	1500m
0.75mm <sup>2</sup> (Φ1.0)	320m	2900m	300m	2700m	280m	2500m	270m	2400m	260m	2300m
1.25mm <sup>2</sup> (Φ1.2)	450m	4100m	430m	3900m	410m	3700m	400m	3600m	390m	3500m

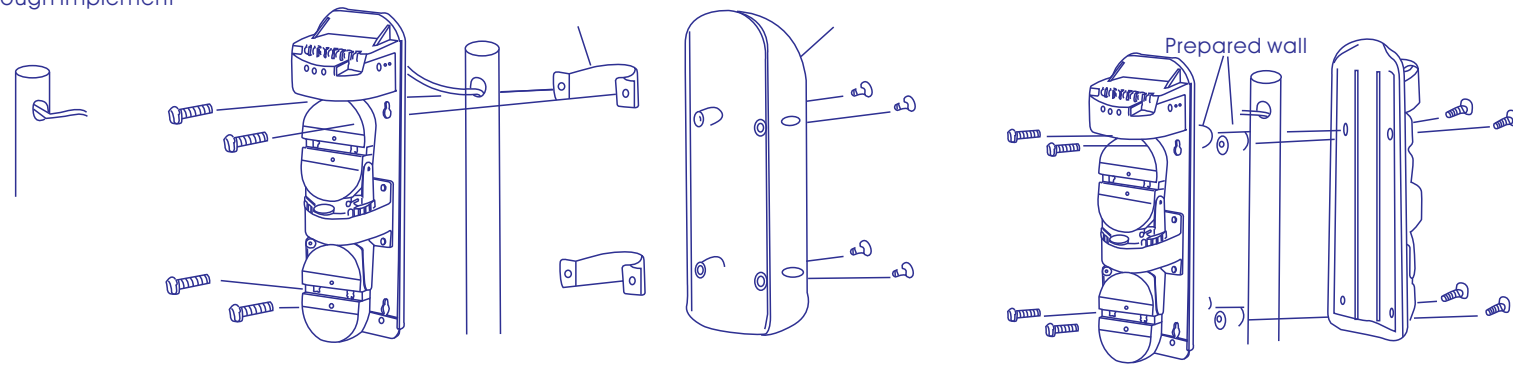
3 The way to fix basic board on the trestle

2 take down the outer garment

3 fix the basic board on the trestle

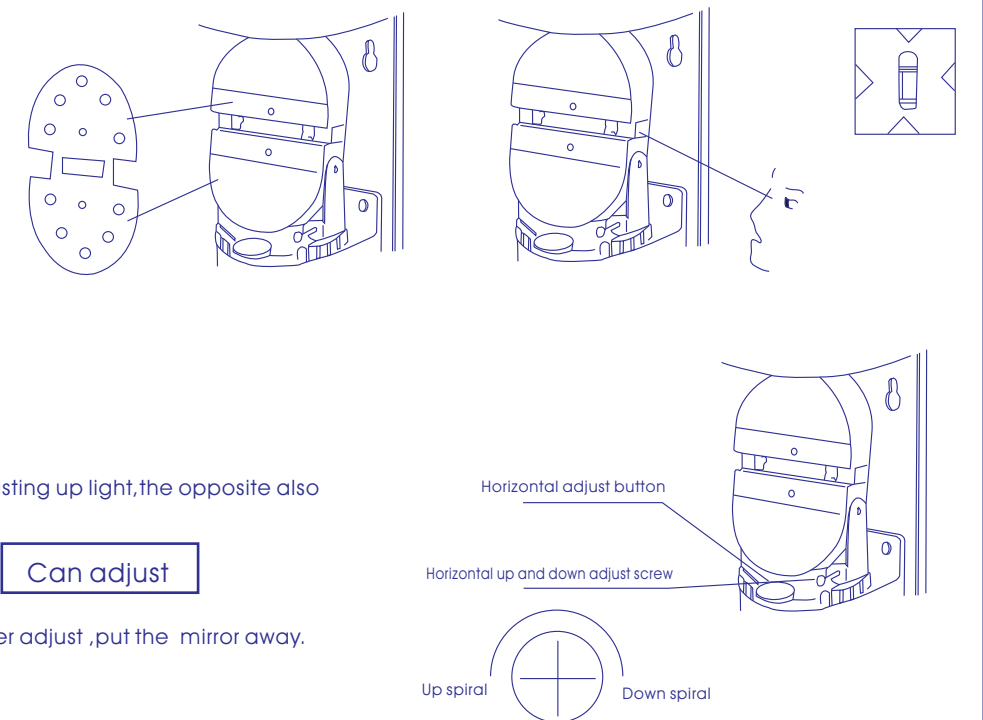
4 refer to the following picture then fix back to back

1 Make the holes in the trestle and pierce the light through implement



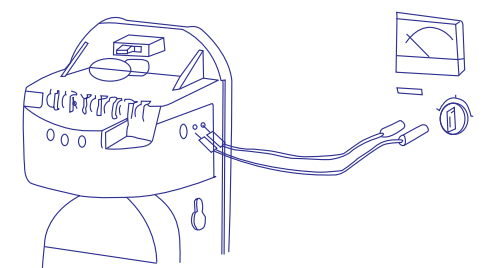
## 4 Adjust the lights

In order to indicators accuracy, light receiving and light sending implement should adjust  
 1, take down the outer garment and switch on the power.  
 2, take down the aim mirror and fix according to the following picture.  
 3, check the effect of the aim mirror on the right about 10cm.  
 4, adjust the up and down angle and the angle adjust rack, the shade of the sensor opposite will be in the middle of the aim mirror then the indicator lamp of light accepting implement will be on.



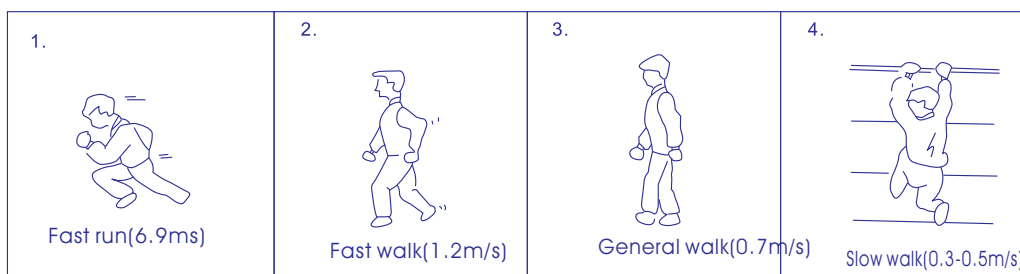
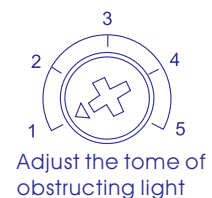
The best light adjusting way - measure hole output

according to the test hole to read voltage and adjust to the best condition  
 1 bag the receiving and sending implement mirror.  
 2 plug the measure pen in the measure hole (attention +).  
 3 adjust the horizontal angle until the power is the most, then adjust in vertical direction, the way is the same as horizon angel.



## 5 Adjust the time of obstructing light

The obstructing time of the line accepting implement can be adjust according to picture, generally the time should be a little less than the time of the invading time.



## 6 Check the steps

After fixing the sensor, the working test should be taken, please take action and confirm according to the chart.

	Condition	Express
sending implement	Sending	Green LED light
Accepting implement	Warm	alarm show not on
	alarm	warm shows the light is on

## 7 Check the unusual condition

Trouble	Reason	Countermeasure
The indicator lamp of light sending implement is not on	The power block or cut	Check the power and line
The indicator lamp of light accepting implement is not on	The same as above	The same as above
This light was covered and the indicator lamp of the light accept implement is on	Other light irradiate into the light receiving implement and 4 light was covered at the same time	Clean the irradiate and change light angle adjust the time.
After covered the light, the alarm indicator lamp of light accepting is not always on	The light was block or cut the light point not obscure	Check the power and line
The alarm indicator lamp of light accepting implement is not always on	Light shaft not adjust well, there are some block between defect or or outer is too dirty	Adjust the light shaft and clean the outer garment. Use the soft cloth.
There is still alarm sign after power off	The line not met. The power changeable. There are moving block. The fixing basic not steady. The light shaft not adjust well. other moving matters covered the light.	Trim trees, choose the steady basic. Adjust the light shaft again adjust the covering time or change the installation place.

## 8 Technology parameter

Alarm distance	Outdoor 50m 100m 150m 200m 250m
	Indoor 150m 300m 450m 600m 750m
The largest distance	700m 1400m 2100m 2800m 3500m
the number beam	4beam
survey way	4 beam infrared covered at the same time
light resource	Infrared LED
response speed	35-700 Msec can adjust
alarm output	Transmit point output IC point out put acdc30v 0.5max
Power	DC13.8-24V
expend power	95mA 100mA 100mA 100mA 105mA
temperature scope	-25°C ~ 55°C
Forestall disassemble	Point transmit lb
light adjust angel	Vertical 180degree(+90degree) horizontal 24degree(+12degree)
aim mirror	Certain type
link line	attach M3 and screw point
deal with frost and frog	refer outer shape
other attach implement	Light receive check point
Material	ABS resin
Weight	970g(accept implement and sending implement)

## 9 The side of outer garment

