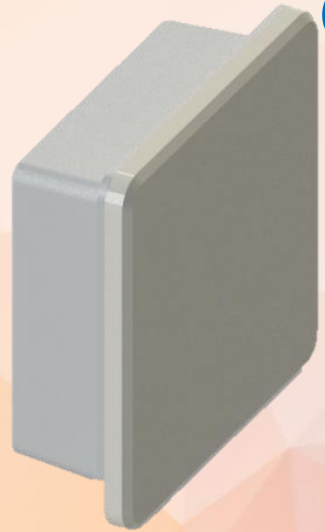


## Outdoor overall model



## Outdoor installation type



## Wi-Fi 5GHz Antenna Series

- Precision dual polarization
- Ultra high gain
- Anti-interference
- Super weather resistant
- Low wind resistance
- Anti-typhoon fixture
- Long warranty guarantee



IO-Power Technology Co., Ltd.  
1F., No.100, Jinzhu Rd., North Dist., Hsinchu City 30055, Taiwan  
勁電科技有限公司 統一編號: 25081985  
台灣 30055 新竹市北區金竹路100號1樓

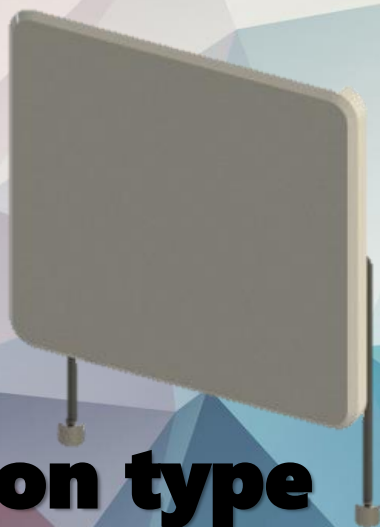
Tel: +886 3 5429395 Fax: +886 3 5357297 Cell: +886 933168849



## **Outdoor overall model**

### **Integration with**

- The MBAP-11ac series**
- The ELBR-11ac series**
- Can be incorporated into the EL-N-11an series**

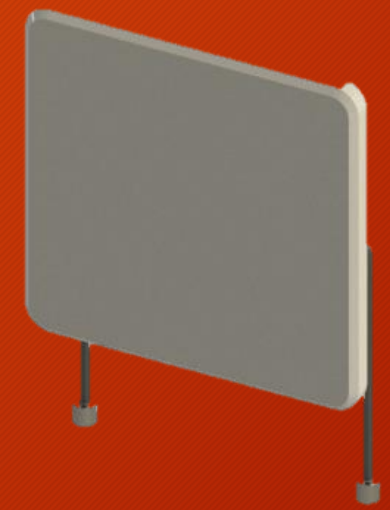


**Outdoor installation type**  
**Support 6-8Km full speed transmission rate**

## **Wi-Fi 5GHz Antenna Series**

- Precision dual polarization**
- Ultra high gain**
- Anti-interference**
- Super weather resistant**
- Low wind resistance**
- Anti-typhoon fixture**
- Long warranty guarantee**

# Development Roadmap



## Dual-Polar Wi-Fi 5GHz Series



18-20dBi Dual-Polar Antenna  
For Outdoor distributed &  
One-piece SKUs

## Tri/Quad-Polar Wi-Fi 5GHz Series



14-16dBi Tri/Quad-Polar Antenna  
For Outdoor distributed &  
One-piece SKUs

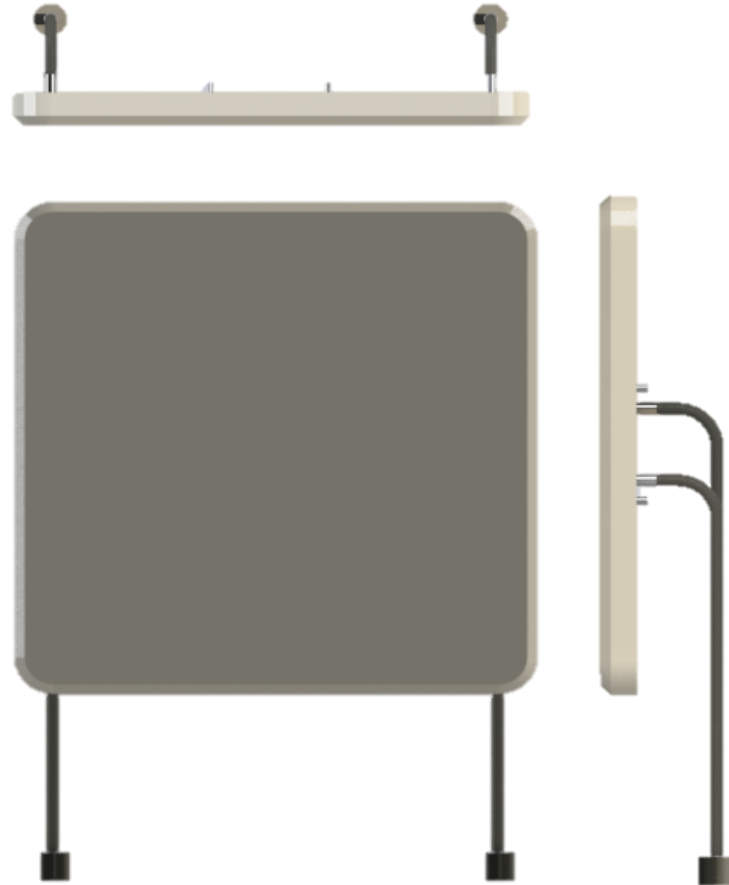
## Customize / Intelligent Wi-Fi 5GHz Series



Costumed design for  
Dual-band Dual-Polar Antenna  
Multi-Beam 5G Dual-Polar Antenna  
Intelligent Customize Special Antenna

# Antenna Specification

## OUTDOOR OVERALL MODEL



\* Cable loss is exclusive

\* Antenna Dimension is designed as 262x262x31 mm

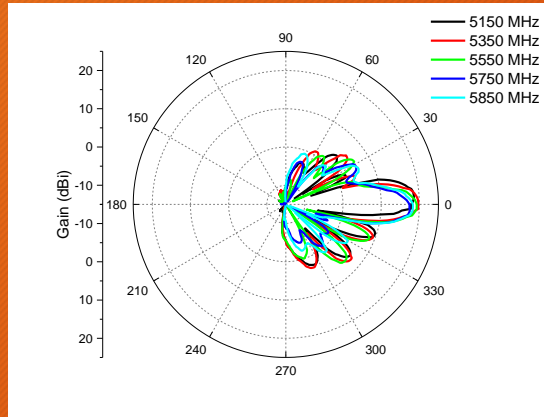
Electrical Specification	
Frequency Range	5150 - 5875 MHz
Gain	19 dBi +/-1dBi
VSWR	2 : 1 Max.
Polarization	Dual Linear, V/H Pol.
HPBW / Horizontal	15°±2°
HPBW / Vertical	15°±2°
Front to Back Ratio	-20dB
Isolation	25dB Typl.
Power Handling	5W
Impedance	50 Ohms
Cable	RG233, 100cm
Connector	N Jack x 2
Survival wind speed	216Km/hr
Temperature	-40°C to +80°C
Mounting kit	Pole mount & Wall mount & Street light mount



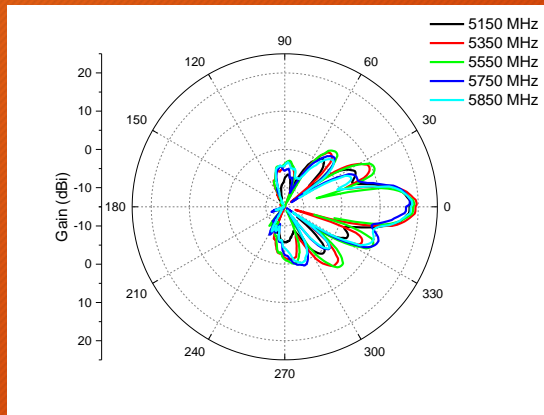
# Antenna Specification MBAP / ELBR SERIES

## H-Polar

H-Plane

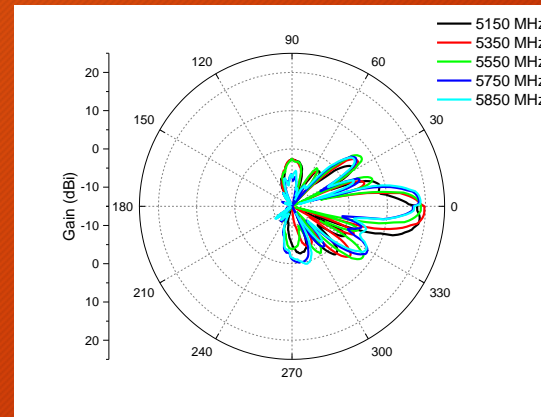


V-Plane

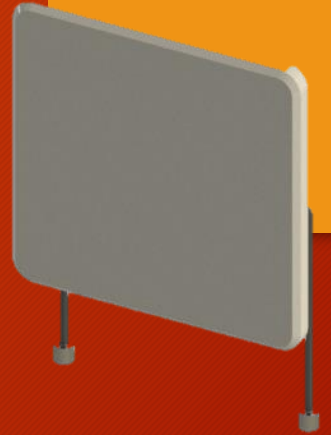
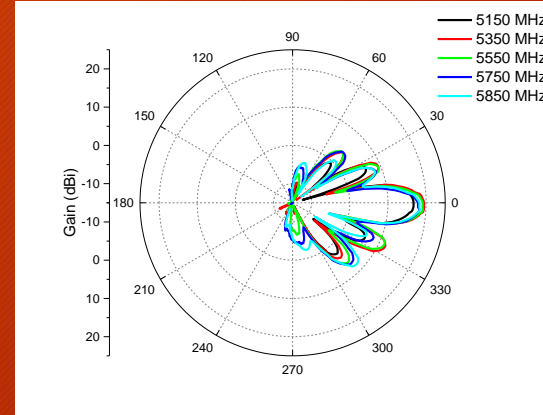


## V-Polar

H-Plane



V-Plane



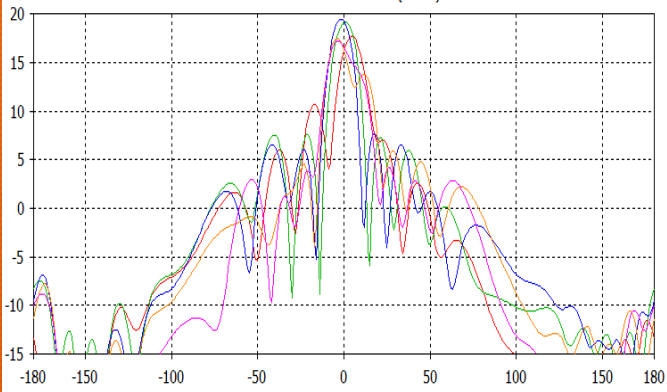
# Antenna Specification -- OUTDOOR OVERALL MODEL

## H-Polar

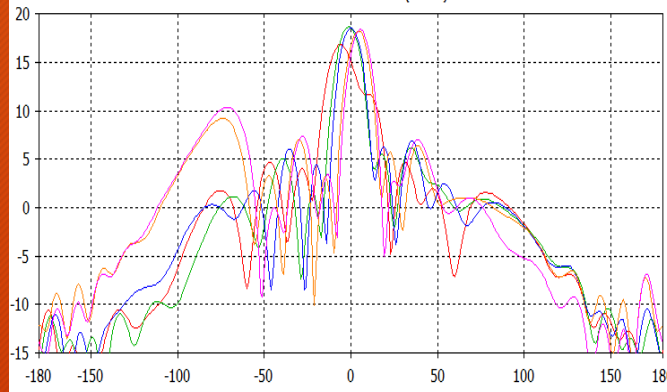
## V-Polar



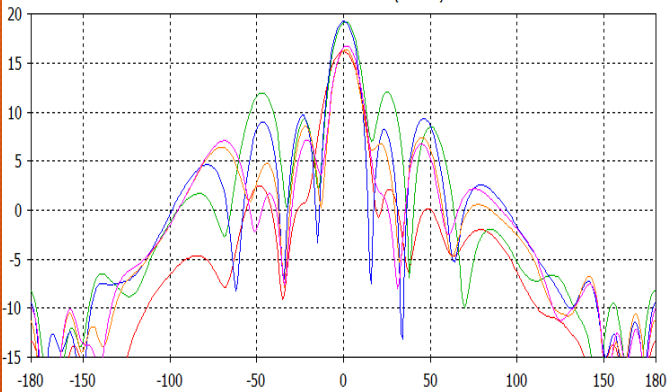
H-Plane



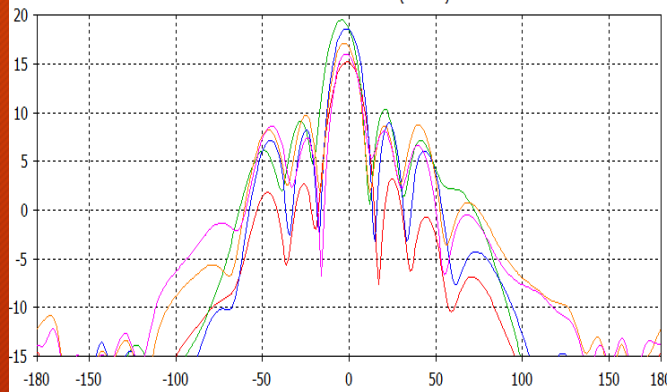
H-Plane



V-Plane

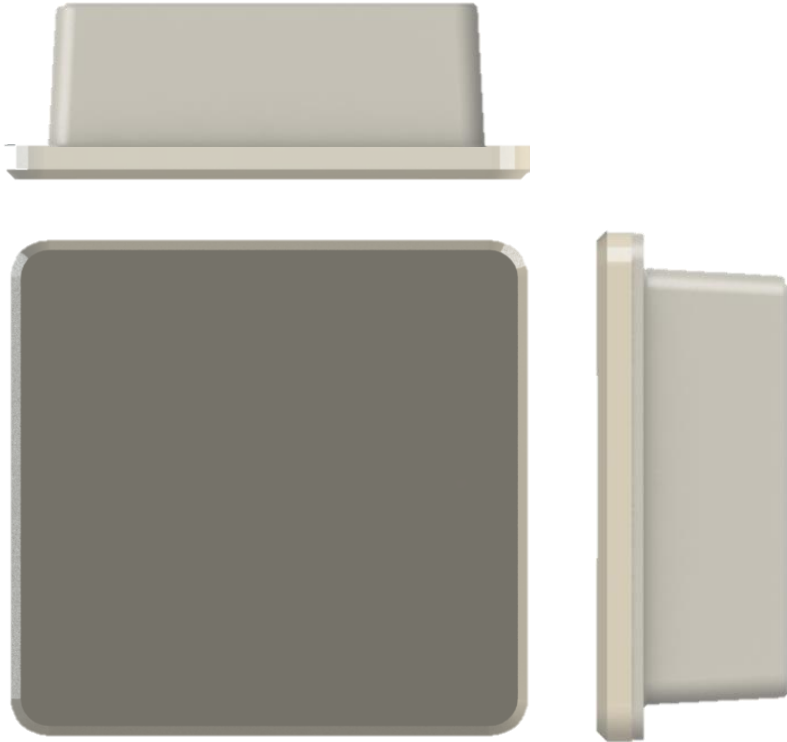


V-Plane



# Antenna Specification

## MBAP / ELBR SERIES



Electrical Specification	
Integrate WiFi ODU	MBAP / ELBR Series
Frequency Range	5150 - 5875 MHz
Gain	19 dBi +-1dBi
VSWR	2 : 1 Max.
Polarization	Dual Linear, V/H Pol.
HPBW / Horizontal	15°±2°
HPBW / Vertical	15°±2°
Front to Back Ratio	-20dB
Isolation	25dB Typl.
Power Handling	5W
Impedance	50 Ohms
Cable	RG233, 90cm
Connector	MMCX (Customize Type)
Survival wind speed	216Km/hr
Temperature	-40°C to +80°C
Mounting kit	Pole mount & Wall mount & Street light mount

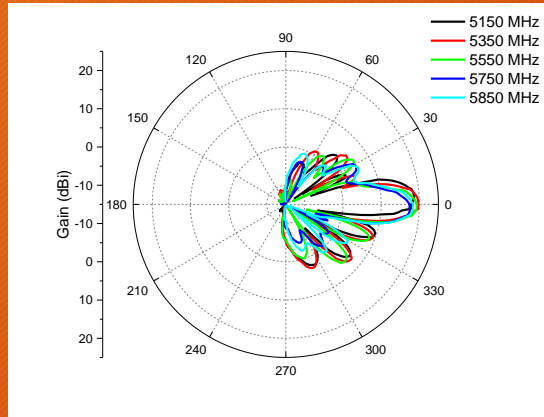
\* Cable loss is exclusive

\* Antenna Dimension is designed as 262x262x31 mm

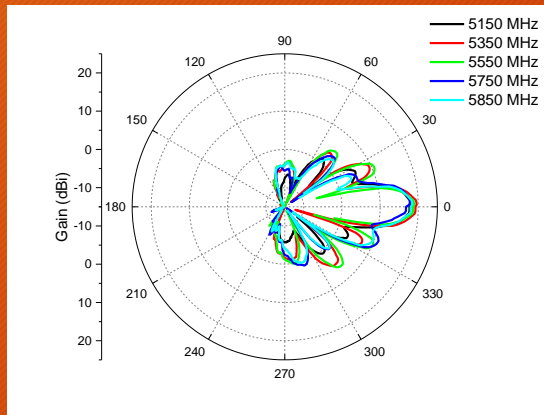
# Antenna Specification MBAP / ELBR SERIES

## H-Polar

H-Plane

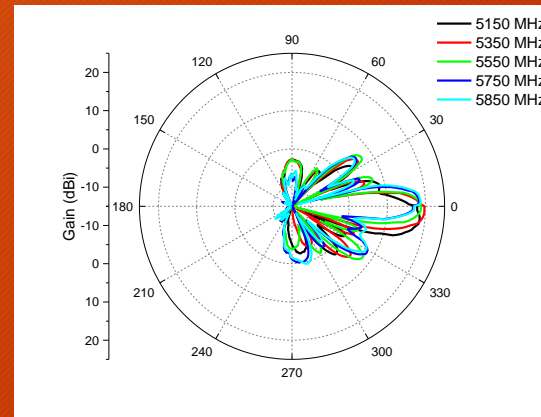


V-Plane

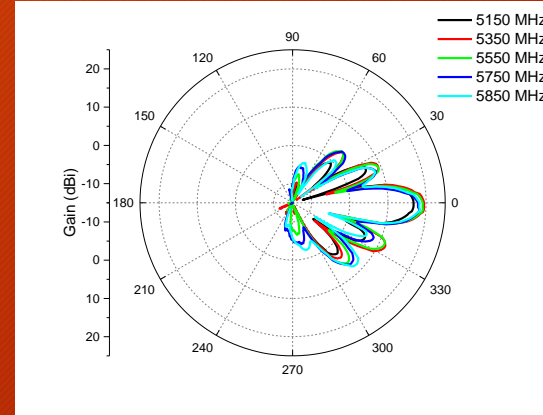


## V-Polar

H-Plane



V-Plane





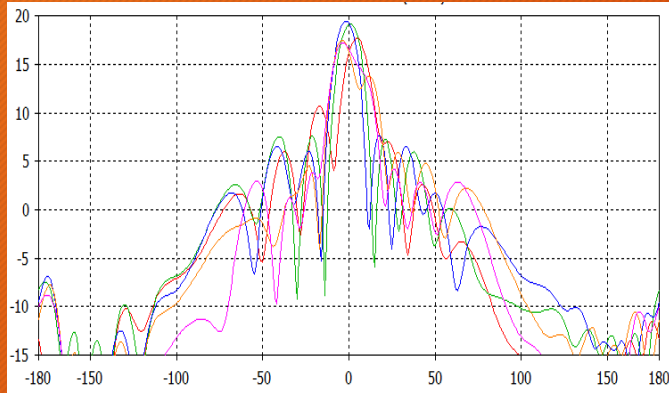
# Antenna Specification MBAP / ELBR SERIES

## H-Polar

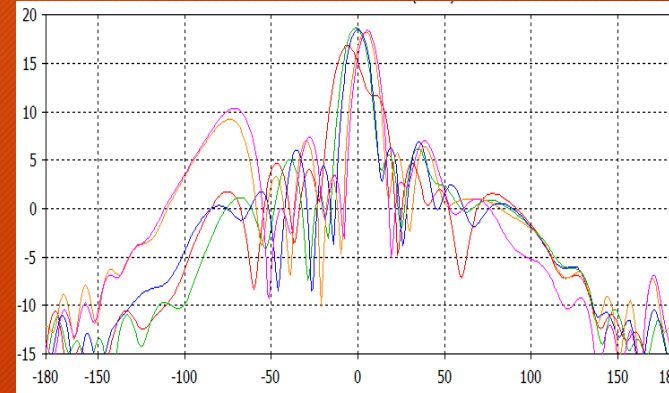
## V-Polar



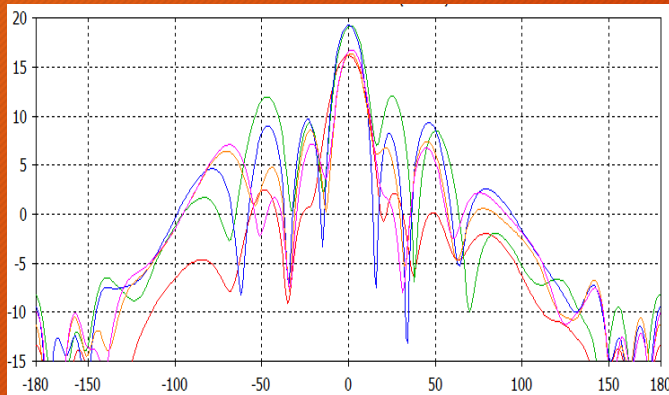
H-Plane



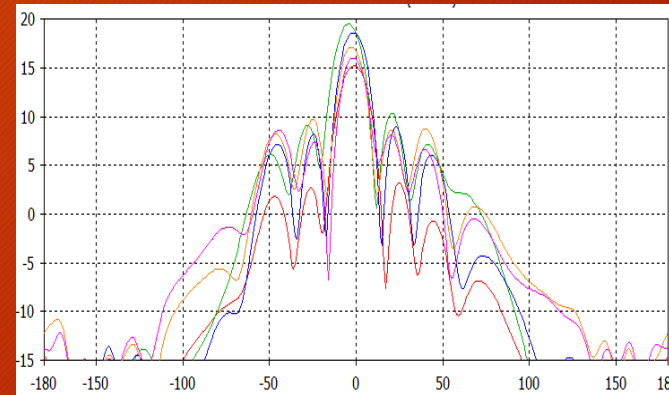
H-Plane



V-Plane



V-Plane



**Thank You**