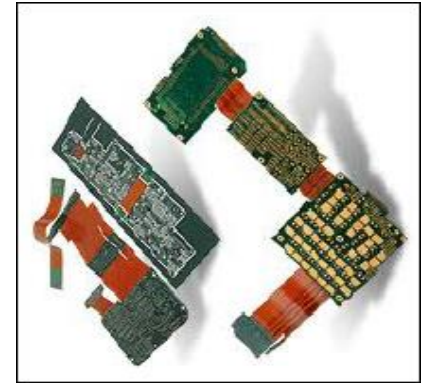


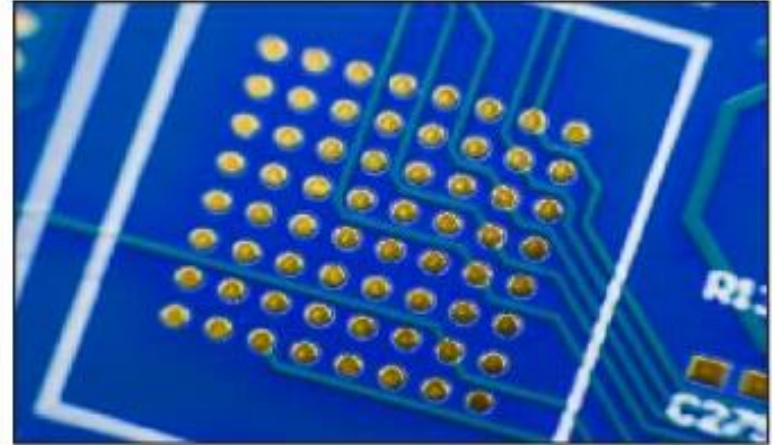
➤ **Corporate Overview**

March 2019

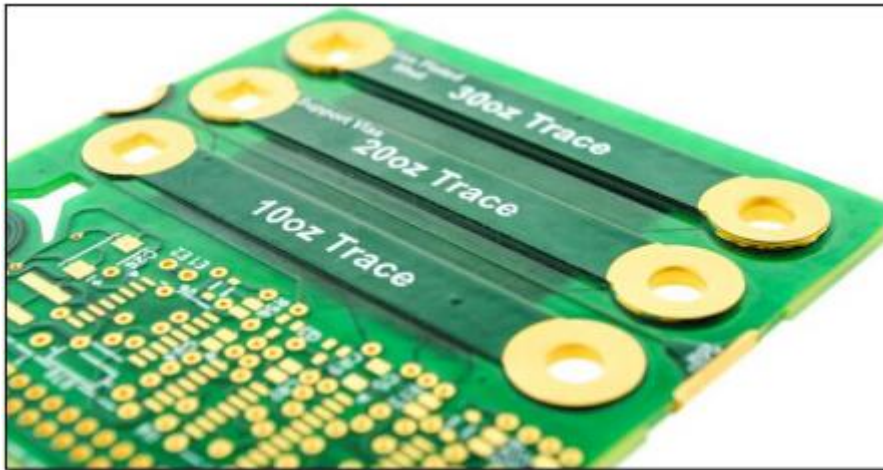
- Privately held company, established in 2001
- Main Products: PCB, FPC, Aluminum, Rigid & flex
- Number of employees: 750 staff
- Factory area: 21,000 square meters
- Current Monthly output: 400 thousand square feet
- Vision: offer best service and win-win cooperation



- Quick turn Delivery on all Quantities
- Up to 24 layers
- Heavy Copper
- All RoHS Laminates & Finishes
- High Density Interconnect (HDI)
- PCB Design & Layout
- Blind & Buried Via's



Via-in-Pad technology shown .005 laser drill within .015 BGA capped and plated pads.



- Controlled Impedance
- Ultra Clean Ionic Cleanliness
- Via In Pad
- Laser Drilling & Imaging
- Sequential Lamination
- MIL-55110 & 31032
- Fine Lines & Spaces
- Up to 24" x 36" Panel Size

Item	Manufacturing Capability	
	Mass Production	Sample
Max dimension	1200x600mm	1200x600mm
Layers	2-22layers	2-24layers
Copper(inner)	18-140um	18-240um
Copper(outer)	12-210um	12-210um
Finished board thickness	0.25-4.0mm	0.25-4.2mm
Impedance Tolerance	±10%	±8%
Inner: Min circuit Width/ Space	3/3mil	3/3mil
Outer: Min circuit Width/ Space	3/3mil	3/3mil
Inner Board thickness	0.1-1.6mm	0.075-1.6mm
Min.Drill Bit size	0.1mm	0.1mm
Surface Treatment	LF-HASL, OSP, ENIG, Immersion Silver, Flash Gold etc	
Material	FR-4, High TG, CEM-3, HIGH-FREQ, ISOLA, ITAQ, Halogen-Free etc	



- SS, DS & Multi-Layer Flex Circuits
- Rigid Flex up to 12 Layers
- Installation of connectors & contacts
- Materials: Kapton, Mylar, Teflon
- Adhesives: Acrylic, flame retardant, epoxy, polyimide, phenolic
- Stiffeners: FR-4, polyimide, aluminum



- Quickturn Prototypes
- Production Quantities
- Design for Manufacturability
- Reviews & Assistance
- Different coverlay options available

Item	Manufacturing Capability	
Dimension	Min: 10x15mm	Max: 520x330mm
Layers	1-12layers	
Copper Thickness	12um, 18um, 35um, 70um	
Finished board thickness	0.075-4.0mm	
Min Circuit Width/ Space	0.05mm/0.065mm	
Min.Drill Bit size	0.1mm	
Surface Treatment	OSP, Gold Plated, Immersion Gold, Immersion Tin, Gold Plating etc	
Material	PI, PET, PEN	



- Equipment Superiority: German SCHMOOL high-speed drilling machine
- Management Superiority: Employed the Japanese consultant, comprehensively promotes the elaborating management in Jun, 2013.
- Capacity Superiority: 40,000 square meter per month PCB.(at present) ,60,000 square meter per month PCB.(in Dec,2020)
- Quality Superiority:
 - Internal quality level
 - Bare board after etch test yields $\geq 90\%$
 - Final test yields $\geq 95\%$
 - Final inspection yields $\geq 95\%$
 - Final audit sampling defect $\leq 200\text{ppm}$
 - External quality level
 - Customer's production defect return $\leq 100\text{ppm}$

Delivery Time

Layers		Lead Time
	Sample	M.P
2layers	3-5days	8-10days
4-6layers	5-7days	15-17days
8-10layers	8-10days	17-20days
12-16layers	15-18days	24-26days
18-24layers	20-25days	29-35days
Remark : Above Lead time based on EQ finished.		



Power



PC Relative



Telecom



Car Relative



Industrial



Consumer

Used for automotive control devices, sensors, Telemetric, LED lighting /headlamps, on-board entertainment, dash-board ,air condition ,and Start/stop switches.





Hitachi drilling machine



High-speed two-axis drilling machine



X-RAY shooting machine



Automatic PTH line



Automatic plating line



Automatic film machine



Parallel exposure machine



Develop machine



Vacuum etching line



Clean room



Automatic screen
printing machine



High-speed flying machine



FPC exposure room



Wet workshop



DES line



Heat pressing machine



E-test machine



SMT line



AOI



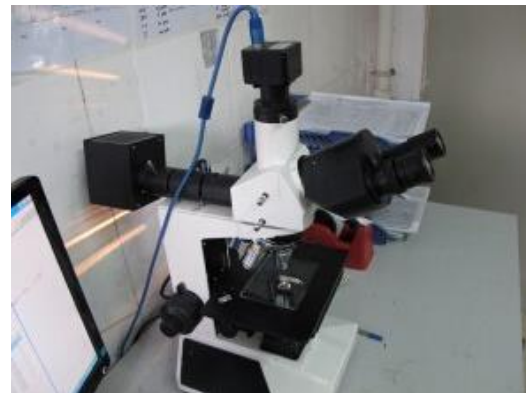
Impedance Tester



Hole copper thickness tester



V-CUT test machine



Metal graphic Microscope



Ionic contamination tester



OMRON



Jabil
CIRCUIT

hynix
Semiconductor

Haier



Schneider
Electric


EMERSON

ABB

FLEXTRONICS

PHILIPS
Let's make things better

Honeywell

AMETEK


SANMINA-SCI

 **Electrolux**

- Comprehensive quality & environmental management system
- ISO 9001, ISO 14001 certified
- IPC -4552 for nickel immersion gold plating (ENIG)
- MIL-P-13949 plastic sheet, laminated, metal clad
- IPC-7721-Repair/Rework/ IPC-TM-650 Test Methods
- 100% production inspections, statistical outgoing
- Full PPAP requirements knowledge
- 8D Report analysis in place
- Dedicated technical and quality support to major clients – available for consultancy on site within 24 hours



- Long term Partnership Performance
- Quick response and professional Supporting
- Liability coverage
- Qualified manufacturing in Quick-Turn and mass production
- Engineering and quality on site support
- On time shipping and express shipping service
- 24Hours sales supporting



If you require additional information please contact us with any questions or requests.

Headquarter: *B Block, Times Square, Henggang Town, Longgang District, Shenzhen, China*

Factory: Building 20, Shangxing West Industrial Zone, Xihuan Road, Shajing Town, Bao'An District, Shenzhen, China

Contact Us By Email:

Sales sales@headpcb.com

Quotes quoting@headpcb.com

Visit Our Website For More Information

www.headpcb.com