

WIFI NVR Kit

Quick Installation Guidelines

Model:4/8 CH



Sincerely thanks for purchasing our product, please contact us if any problem or requirement.

This manual is network video recorder. This user manual may contain incorrect place in technology, place not matching with product. Function or operation, or printing mistake. We will update our user manual according to our updating in product, and will periodically Improve or updating the product and programming the updating content will add in the new User manual, we won't inform. If the product's description in user manual is inconsistent with the real product please based on the real products.

Please read this instruction manual carefully to ensure proper use of the product.

◆ 1.Safety cautions

- 1.Please don't put a container with liquid on DVR (like Vase).
- 2.DVR should put at a ventilation place, and prevent clogged the ventilation hole.
- 3.Check the power voltage, in case if damage by wrong voltage.
- 4.DVR should work at the technical standard range of temperature and humidity.
- 5.Place DVR on level, Please avoid installing at a sharp pounding place.
- 6.Moisture dust in PCB will cause short, circuit or long-term use of the DVR, you can
- 7.Perodically remove dust in PCB by brush.
- 8.It will burst if replace battery in wrong way, we don't suggest user to replace by
- 9.Himself,if need replace, only use the same type or equivalent type battery, Please don't try to open or maintain the battery.
- 10.DVR installation need according to specification, you can take the national or local standard as reference.

◆ 2.Open-package inspection

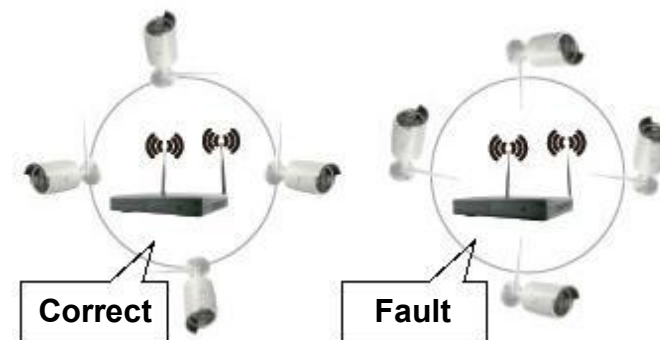
After receive product, Please open gift box, remove NVR and put it on suitable place, check accessories. If any damage or lack, kindly Please contact to the distributor

S/N	Item	Quantity
1	NVR	1pcs
2	Screw bag 4pcs for HDD	1pcs
3	USB mouse	1pcs
4	1 meter network cable for IPC code match	1pcs
5	DC12V 3A power supply for NVR	1pcs
6	NVR user manual	1pcs
7	IP Camera	4/8pcs
8	DC12V 2A power supply for IPC	4/8pcs
9	Screw bag for IPC	4/8pcs

◆ 3.Installation diagram



◆ 4.Safety cautions



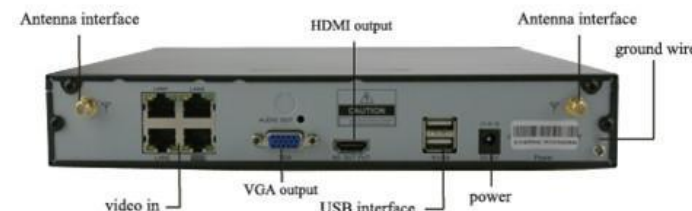
The signal coverage of Antenna is similar to a round circle. Antenna located in center of the round circle, signal of surrounding is much stronger, but much weaker if antenna end-points. Back off direction. according to the signal divergency characteristics of antenna, and in order to guarantee the video quality, IPC antenna should try to keep in parallel or tangent with NVR antenna.

◆ 5.HD Install

- 1.Remove the screw of the NVR 2.Connect the HDD cable and power line
- 3.Asmble the screw, and fix the HDD in the bottom of NVR
- 4.Close the cover and fix it



◆ 6.Rear Panel Description



◆ 7.NVR & IPC Specification

Model	NVR
Operating System	Embedded Linux OS
AV (audio/video) input	
Network Video	8CH
Network video input broad bank	20Mbps
Audio Bit rate	64Kbps
AV (audio/video) output	
HDMI input	1ch, resolution: 1024x768, 1366x768, 1440x900, 1920x1080p
VGA output	1ch, resolution: 1024x768, 1366x768, 1440x900, 1920x1080p
AV CODEC Specification	
Video Resolution	DI/720P/960P/1080P
synch-playback	8CH
Video Control	
Video/Capture mode	Manual、Time、Motion、Alarm
Playback mode	Real time、Routine、Event
Backup	USB backup
Alarm	
Alarm Input	4ch (optional)
Alarm Output	1ch (optional)
Hard Disk	
Type	1*SATA interface
Max Capacity	4 TB at most for each
External Interface	
Network Interface	1 adaptable RJ45 10M/100M, 1 WIFI interface
USB Interface	2 USB 2.0
Network Control	
Protocol	UPnP (play & plug)/SMTP(email service)/PPPoE(dial-up),DHCP(Automatically obtain an IP address), etc...
Others	
Power Supply	DC12V3A
Power Consumption (W)	≤5W (Without HDD)
Operate Temperature (°C)	-10℃~+55℃
Working Humidity (%) RH	10%~90%
Size	257 (W) × 210 (V) × 45 (H) mm
Weight(excluding HDD)	≤1Kg

Model	IPC
Technical Parameters	
Sensor	1/4" or 1/3" Progressive Scan Sensor
Signal System	PAL/NTSC
Resolution	720P/960P/1080P 16 : 9 High Definition
Minimum illumination	Color: 0.1 Lux; B/W: 0.01 Lux
Shutter	1/25s to 1/25,000s
Lens	3.6/4/6mm (optional)
OSD	Date Time & Title
White Balance	Auto
Day& Night	Auto / Color / BW
3D-DNR	Auto
Mirror/Flip	On / Off
Frame Specification	Three Steaming at the Same Time: H.264 1920x1080@30fps or below H.264 1280x960@30fps or below H.264 1280x720@30fps or below
S/N	> 39.1 DB
Interface	RJ45 / WIFI 802.11b/g/n
General Specification	
Anti-thunder Level	Standard IEC61000-4-5
Working Temperature/Humidity	-10℃ to +50℃ / 30% to 80% RH
Storage Temperature/Humidity	-20℃ to +60℃ / 20% to 90% RH
Power Input	DC12V-1A
Power consumption	≤6W
Size	205(L)×70(W)×55 (H) mm
Weight	0.5Kg
Level of Protection	IP66

◆ 8.Turn on/off

Confirm that AC voltage accessible matches with DVR. Ensure that the DVR power outlet connect with a good middle ground grounding. After switching power, the device started

【POWER】light is on. Turn into system, if the panel status light flashing, it's normal conditions.

Software operation

◇ 1.add camera by matching code

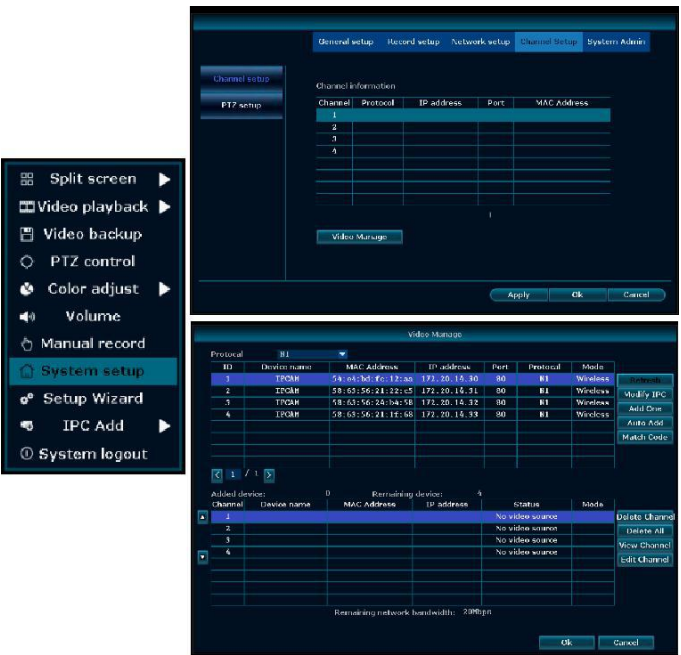
Steps: right click the blank of main interface -> click“ System Setup” System Setup->“Channel Setup”->“Channel Setup”. Click “quick adding”, then Pop up “video manage”

Two ways for Wireless NVR to add IPC “Code Add” and “Auto Add”.

Adding camera by matching code, the camera transmits video images through wireless and NVR,IP is 17.20.14.X;

Auto adding the camera ,the camera transmits video images through the cable and NVR,IP is 172.25.123.X;

Note: the camera has been matched by factory, no need to add other cameras. If you need to match one code. Firstly, take one network cable and connect any NVR LAN port and power on the device to make sure there is still have any channel can add one camera.



◇ 2.Video playback

Step: Right click mouse in main menu —Video playback — choose channel NO.—choose record mode —in Search time, input beginning time and end time —click search, record-ing will come out ,drag time bar —click playback to start

Tips: Playback icon introduction: playback I frame previous

playback I frame next play pause fast for-ward x2,x4,x8



3.Video backup

Step: Right click mouse in main menu —Video backup —choose channel No.—choose record mode —in Search time ,input beginning time and end time —click search, recording will come out —choose the video which need to backup —click video backup

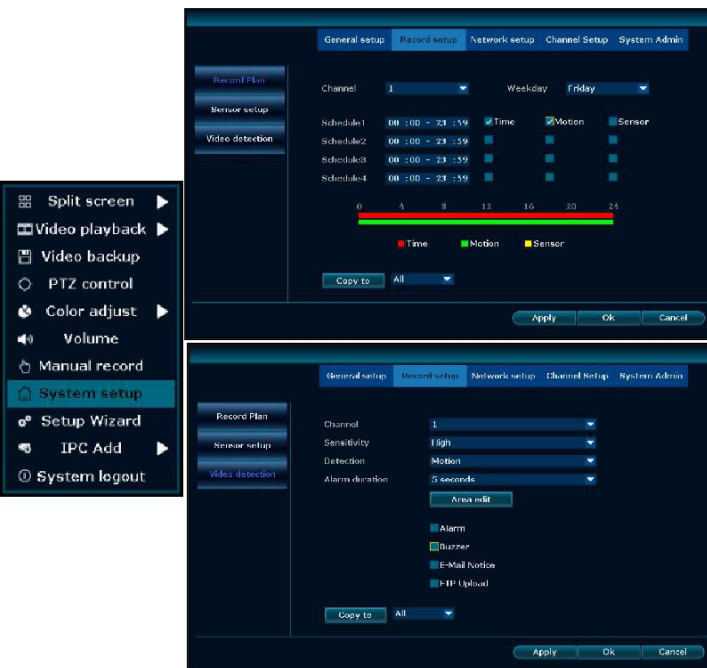
Tips: Support 32G U disk backup max ,recording will be packed every one hour



4.Video detection

Step 1:Right click mouse in main menu →System setup →Record setup →choose motion →choose all →click Copy to →click OK to save setting.

Step 2:Choose Video detection →set sensitivity as required →choose motion →set Alarm, Buzzer or Email as required →click Copy to →click OK to save setting .



5.Generate Esee ID

Precondition to generate Esee ID is that make sure video recorder is connected with network, and IP address is available Right click mouse in main menu —System setup—Network setup

If user is familiar with LAN, then no need to choose DHCP which help to get IP address automatically. Manually input IP address and DNS address, video recorder will generate ID by network, once generate, it will appear in menu



If user not familiar with LAN, or video recorder is in independent network, can choose DHCP to get available IP address

After video recorder get IP address ,it will generate Esee ID automatically

6.Access in LAN

Step 1: Right click mouse in main menu — System setup — Network setup — check video recorder IP address

Step 2:Access by computer in same LAN ,input video recorder IP address and port(If port is 80, no need to input) in IE Browser or any other browser. Then it will access LAN log in webpage, input user name and password, click log in

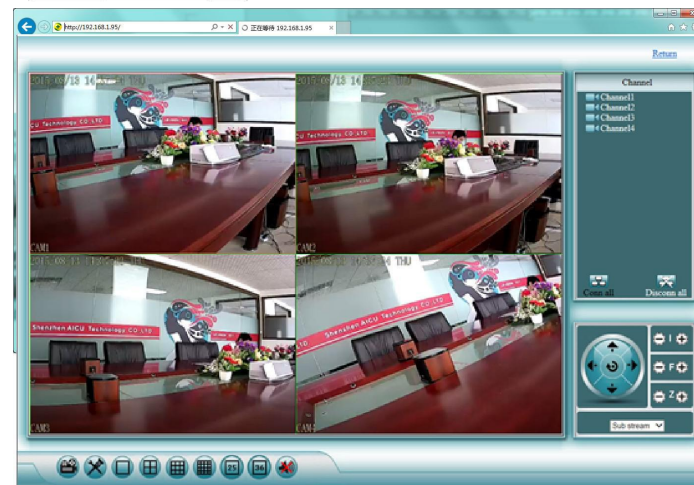
Step 3:Once access successfully, can get video

Tips: Please make sure video recorder and computer in same network segment



User name: admin

Password: (Empty)



◇ 7.Access in WAN

Step 1: Right click mouse in main menu—System setup—Network setup—check video recorder IP address

Step 2: Access by computer in WAN, input www.e-seenet.com in IE browser or any other browser. Then it will access log in webpage ,input ID, user name and password, click log in

Step 3: Once access successfully, can get video recorder side upload and computer side download speed, each channel need above 20KB



◇ 8.mobile app download and installation

Android mobile application:

No.1: Go to www.e-seenet.com in computer, click help — software download —find Android mobile application, click download to save in computer—copy to mobile to install

No.2: Scan two-dimension code by mobile directly ,enter download page, click download to mobile .If mobile do not support two-dimension scan, can input www.e-seenet.com/help/download.php in mobile browser, enter download page, click download to mobile



iPhone application

Step 1: Go to APP store

Step 2: Search Eseenet+

Step 3: Input APP ID password

Step 4: Click download



LS VISION, Only for Quality Life!

◇ 9.Eseenet-Add device

Step 1: Log in Eseenet+ application, Click “+”icon **Step 2:** Enter device edit page

Step 3: Input video recorder log in information **Step 4:** Added successfully .it will show below page

Step 5: Click channel No.to get video



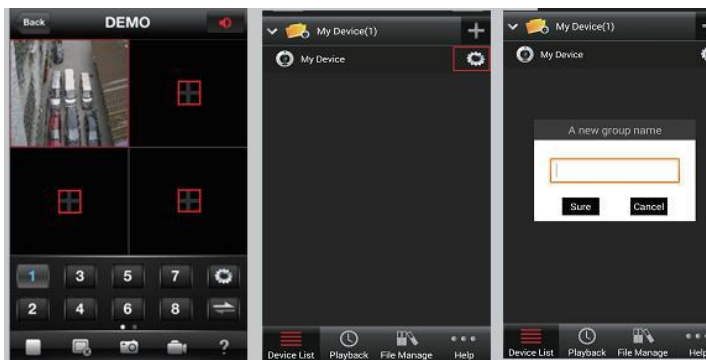
◇ 9.Eseenet—function

Step 1: It will connect channel 1 video by default, click “+”to add more channel

Step 2: Click this icon to edit video record log in in formation **Step 3:** Add device group

Step 4: Play/Pause Snapshot/Record

Step 5: File management and more settings



APP download
scan here



Notes :

Device will not in guarantee if caused by below reason:

- 1.Accident ; negligence ; disaster ; mis-operation.
2. Do not conform to the environment and conditions, such as power improper, working temperature too high or too low, lighting stroke. ect.
- 3.Ever be maintained by other center which not belong to the real factory.
4. Goods already sold more than 12 months.